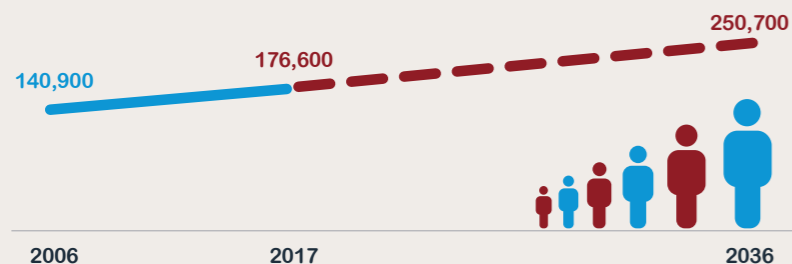


# A HOME IN MORELAND

## THE HOUSING WE NEED NOW AND IN THE FUTURE

### OUR POPULATION IS CONTINUING TO GROW



Moreland is becoming an increasingly popular place to live. Our rate of population growth is in line with Melbourne's rate of population growth.

### WE NEED MORE HOMES



Over the past ten years about 1150 new homes have been built each year.



We will need 1,900 homes to be built each year over the next twenty years. (38,000 in total by 2036.)

# SUPPLYING HOMES IN MORELAND

### WE NEED MORE AFFORDABLE HOMES



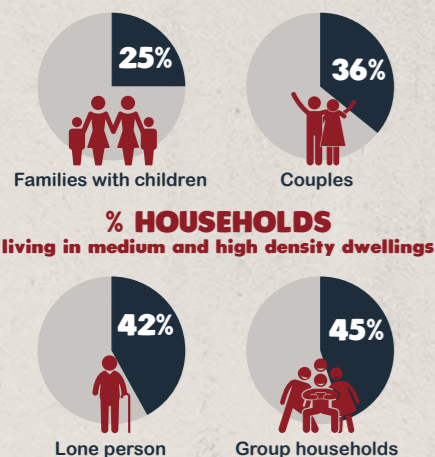
At least 4,000 households in Moreland are experiencing housing stress or homelessness. If nothing is done, this unmet need for affordable housing will increase by at least 3,000 households by 2036.



To meet this need, at least 18% of all new dwellings built over the next 20 years will need to be affordable housing.

### WE NEED MORE SMALLER HOMES

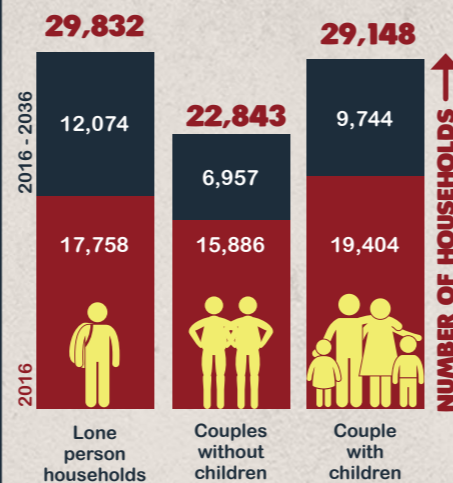
When faced with real world trade-offs between housing type and size, price and location, a significant number of us are choosing units, townhouses and apartments in Moreland.



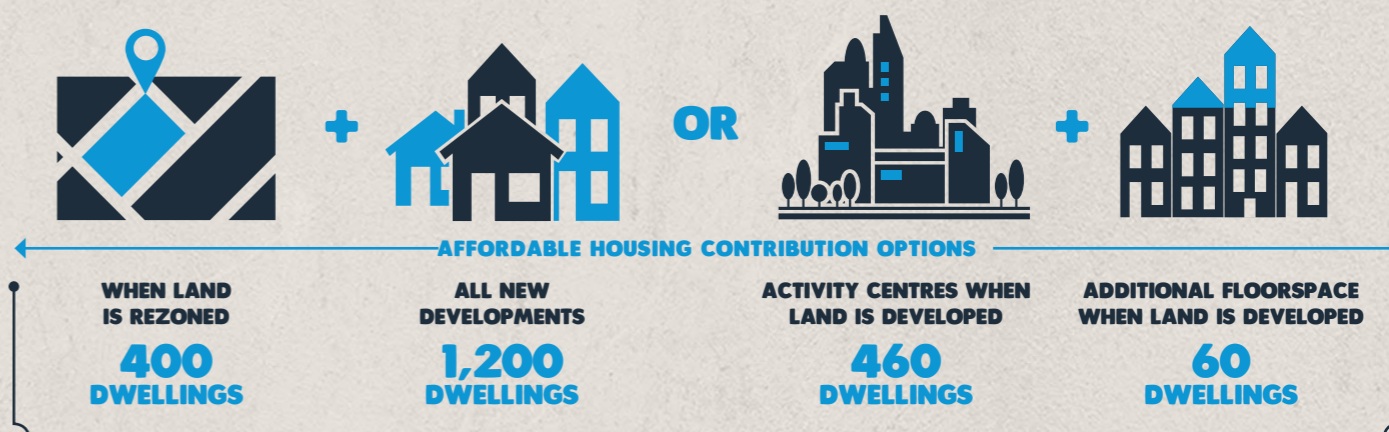
But even with the shift to smaller households, much of our housing is geared towards the needs of larger households.



In twenty years' time there will be more of us living alone than as families with children. This will increase the demand for smaller dwellings.



### WHAT CAN COUNCIL DO WITH GOVERNMENT APPROVAL?



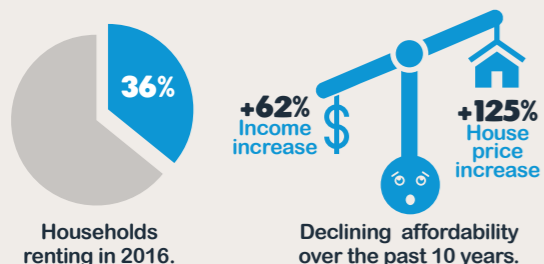
THIS CAN GENERATE UP TO 1,600 AFFORDABLE HOMES

1,600

THIS WILL REQUIRE A CONTRIBUTION FROM STATE AND FEDERAL GOVERNMENT OF UP TO 8,800 AFFORDABLE HOMES

### WE NEED MORE AFFORDABLE HOMES

MANY OF US ARE UNDER HOUSING COST STRESS AND MORE OF US ARE RENTING



TO MEET OUR NEED FOR AFFORDABLE HOUSING, OVER THE NEXT TWENTY YEARS



18% of new homes would need to be affordable. 80% of this need is for very low and low income households in rental stress.

### WHAT CAN THE STATE AND FEDERAL GOVERNMENTS DO?



All levels of government need to work together to address this challenge

1,600 AFFORDABLE HOMES CAN BE ACHIEVED IF...



the State Government includes mandatory Affordable Housing mechanisms in the Victoria Planning Provisions

5,300 TO 8,800 DWELLINGS STILL NEEDED!



State and Federal governments can increase funding, use surplus land and introduce effective policies