

Tree Pit with Grate Cover C100.06



DESIGN STATEMENT

Tree pit grate cover should be used in high pedestrian traffic area such as footpath within activity centres and small shopping strips.

The design of the tree pit grate is accessible for wheelchair, pram and high heels. The grate is locked (not bolted) and can be removed with a long key for easy inspection.

Centre ring can be cut to allow future tree calliper's growth. For new trees, rubber mulch ring should be added around the small tree trunk to avoid litters.

APPLICABLE LOCATION

Footpaths within activity centres and small shopping strips.

Tree pit grate can be used for standard tree pits and WSUD (Water Sensitive Urban Design) tree pits, refer to C120.13 and C120.14.

COUNCIL STANDARD DRAWING

C100.06 Tree Pit with Grate Cover

C120.13 Raingarden Tree Pit

C120.14 Raingarden Back of the Kerb Tree Pit

CROSS REFERENCE DOCUMENT

- AS1379 (Australian specification and standard supply of concrete) for bluestone edge base
- AS4100 for steel work standards
- AS1428.1-1998 (Australian specification & standard design for access and mobility).

STANDARD SPECIFICATION

Type: Customised Merri-bek grate from E.P. Draffin.

Finishing: Mild steel galvanised, sandblasted and electroplated.

Standard size: 1.2m x 1.2m.

Loading: Standard frame is designed for class A & B load for pedestrian footpath. Other application such as vehicular traffic may require stronger frame.

SUPPLIER

E.P Draffin www.draffin.com.au or similar.

MAINTENANCE

Open Space Maintenance:

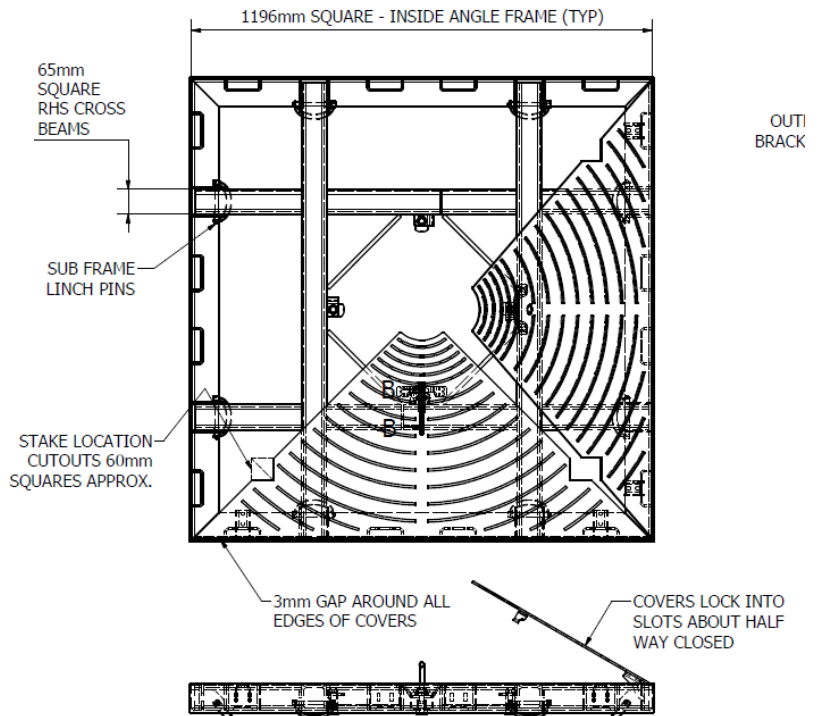
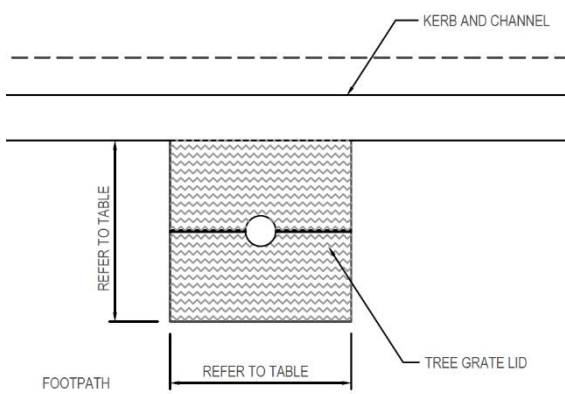
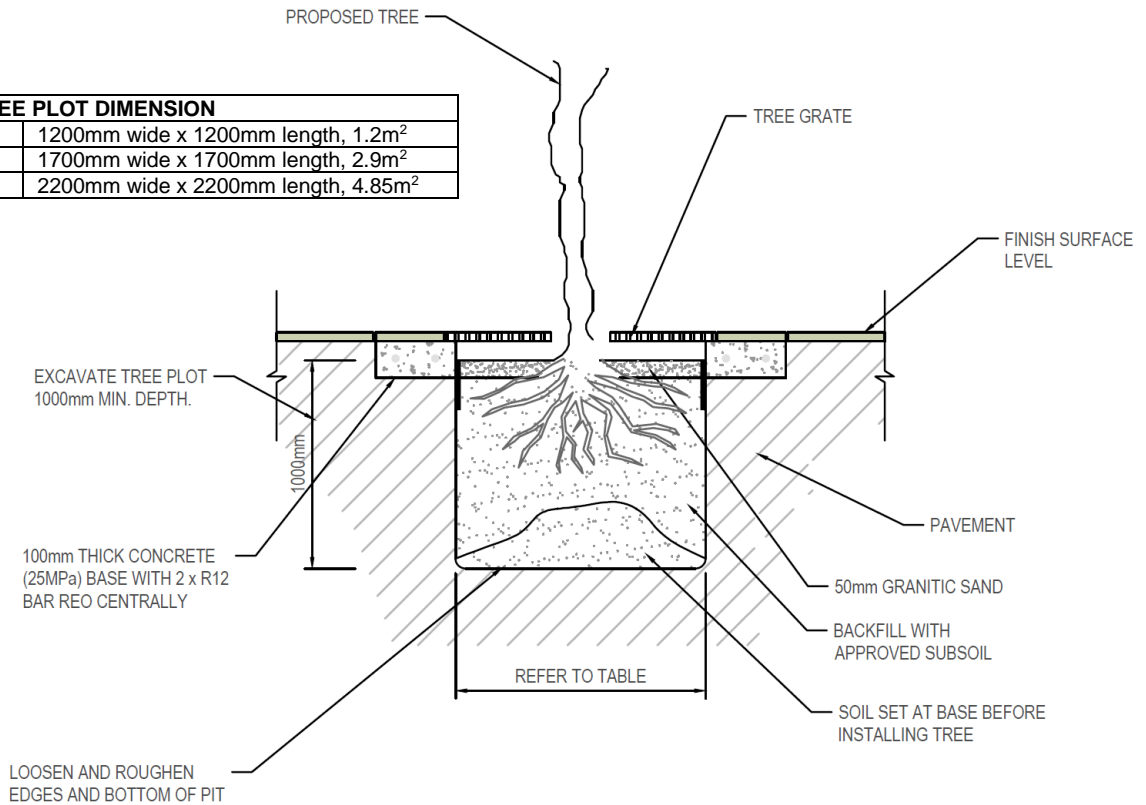
Supplementary watering 3 times per week first four weeks then weekly September - May for first 3 years
Check stakes, remove weeds, replace dead or failing trees

GENERAL NOTES

1. Locate services prior to setting out and excavation. Details of the underground services shall be obtained from tel.1100 (Dial Before You Dig).
2. All excavation to be undertaken by hand.
3. Advanced trees to be approximately 2000mm high (40-50 litres container minimum)
4. Apply 150 litres of water immediately after planting.
5. Apply 25 grams NPK (20:4:8) at planting per square metre of root zone, avoiding contact with roots.
6. Ensure absolute minimum of 1.2m footpath width is maintained at narrowest point.

C100.06 Tree Pit with Grate Cover

TYPICAL TREE PLOT DIMENSION	
Small Tree	1200mm wide x 1200mm length, 1.2m ²
Medium Tree	1700mm wide x 1700mm length, 2.9m ²
Large Tree	2200mm wide x 2200mm length, 4.85m ²



Copyright: E.P. Draffin