



## DESIGN STATEMENT

Bus shelters in Merri-bek consist of Council-owned shelters and privately owned shelters with advertisements (maintained by JCDecaux and Adshell).

This Technote refers to the Council-owned bus shelters, which are generally located outside Activity Centres area.

The design of the shelters is easy to maintain and economical. When bus shelter cannot be provided, a bus seat may be provided as an alternative.

## APPLICABLE LOCATION

As specified by Council Transport Unit. Final positioning of the bus shelter and seat should be confirmed with Council to ensure safety and accessibility are provided.

## COUNCIL STANDARD DRAWING

SD500 and SD501

## CROSS REFERENCE DOCUMENT

- AS1428.1-1998 (Australian Specification and Standard design for access and mobility), AS1554 (Structural steel welding Set), AS 1252 (High-strength steel bolts), and AS4100 (Steel structures)

## STANDARD SPECIFICATION

**Bus Shelter – Type and Size** (length, width and height):

- UDG Woodland Standard SH130: 2485mm x 1949mm x 3071mm (SD500-23)
- UDG Woodland Narrow SH131: 2485mm x 1573mm x 2861mm (SD501-23)

**Bus Seat - Type:** Woodland Shelter includes an integrated seat

## SUPPLIER

Urban Design Group [www.urbandesigngroup.com.au](http://www.urbandesigngroup.com.au) or similar supplier.

## MAINTENANCE

Council is responsible for the maintenance of the shelters except for the privately owned shelter.

## Road Maintenance Unit/ Council Sustainable Transport:

Replace damaged parts.

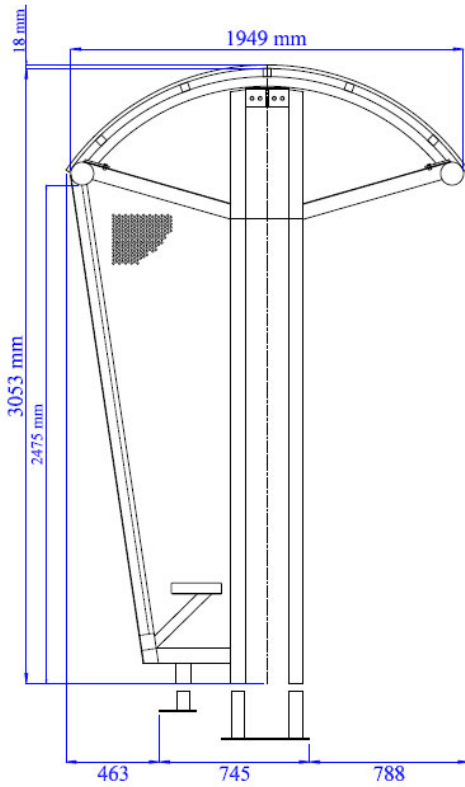
**Street cleansing unit:** Bus shelters (only Council-owned shelters) should be cleaned as per current schedule.

## GENERAL NOTE

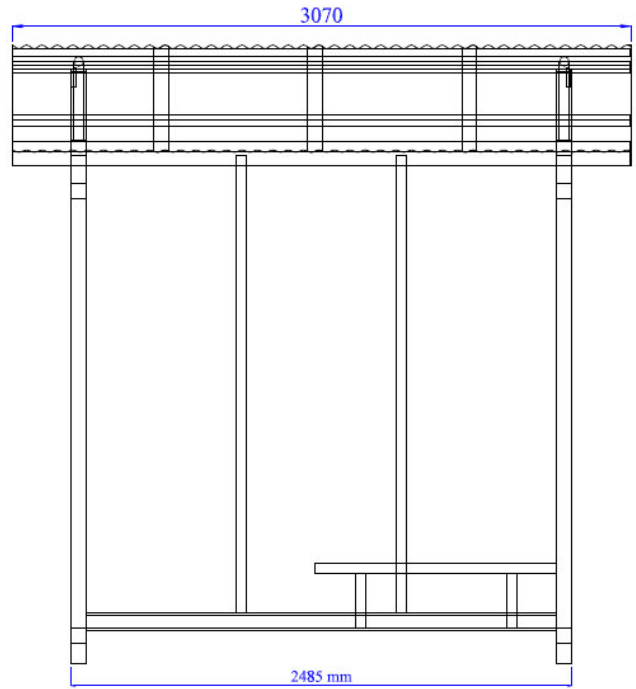
- The installation of a shelter shall be in accordance with the manufacturer's installation manuals and/or specifications.
- The construction of the Bus Stop Hardstand for the Bus Shelter to suit existing width of footpath and nature strip shall be in accordance with the Department of Transport's Standard Drawings, STD\_S0064, STD\_S0065, STD\_S0066, STD\_S0067, STD\_S0068, STD\_S0074 available from: <https://www.vicroads.vic.gov/business-and-industry/technical-publications/standard-drawings-for-bus-stops>
- Position of the shelter on the bus stop hardstand shall be in accordance with the Department of Transport Standard Drawings, STD\_S0069, STD\_S0070, STD\_S0072, STD\_S0073 available from: <https://www.vicroads.vic.gov/business-and-industry/technical-publications/standard-drawings-for-bus-stops>

# B200.03 Bus Shelter - Grey

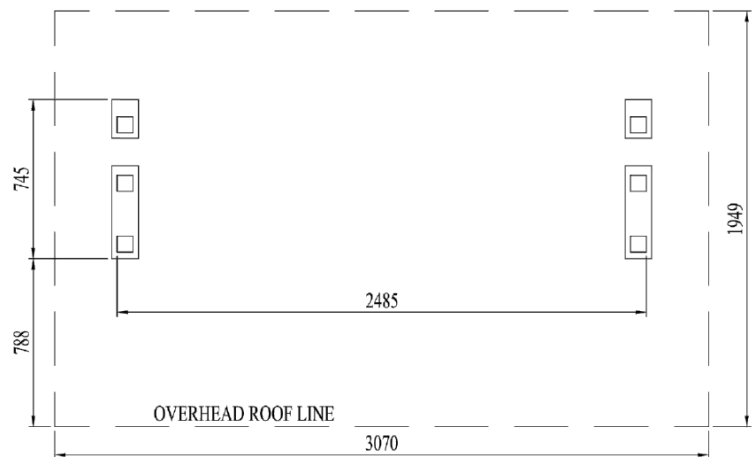
## UDG Woodland Shelter 'Standard' SH130



SIDE VIEW



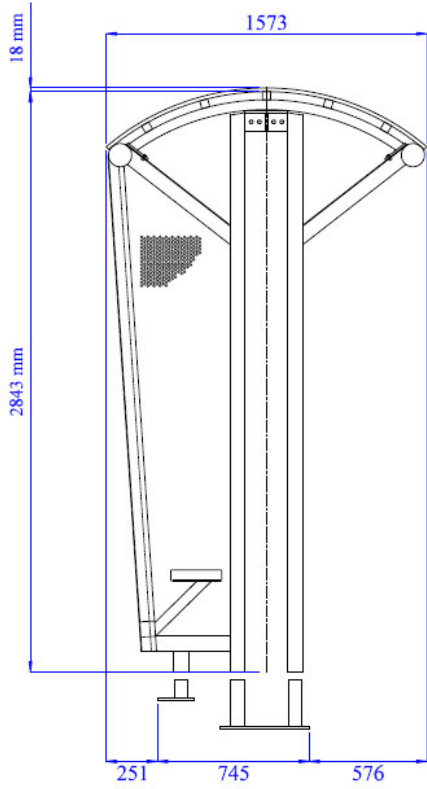
FRONT VIEW



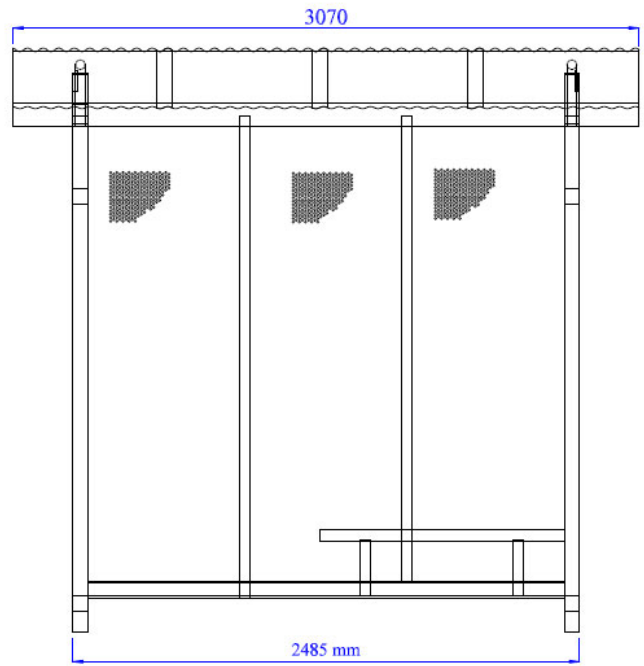
BASE VIEW

B200.03 Bus Shelter - Grey

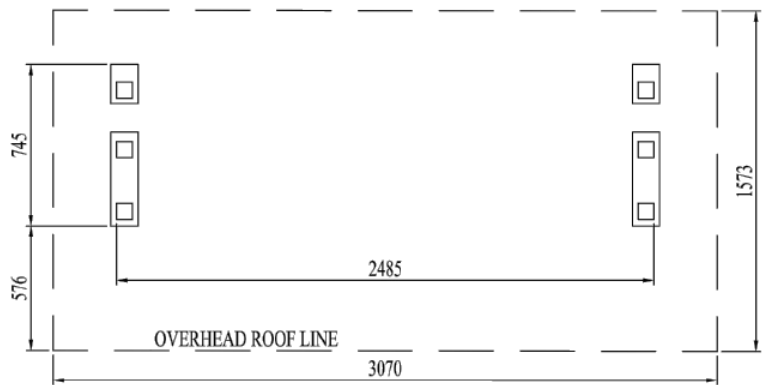
UDG Woodland Shelter 'Narrow' SH131



SIDE VIEW



FRONT VIEW



BASE VIEW