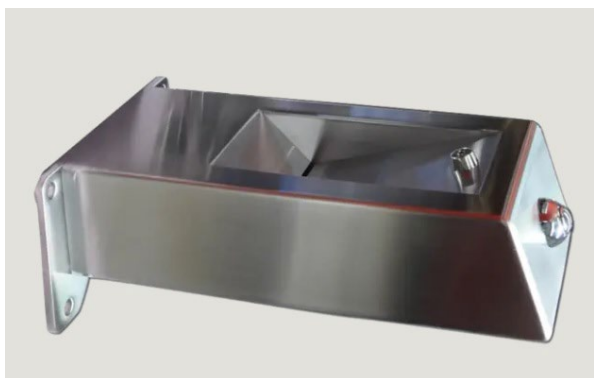

Park Wall-Mounted Drinking Fountain B170.03



Bottle refill wall-mounted example



DDA bubbler outstand wall-mounted example

DESIGN STATEMENT

Wall-mounted drinking fountains are sometimes required near active sports areas, mounted to a clubroom or similar.

Two types of units are supported:

- A bubbler outstand for equal access (DDA)
- OR
- A slimline bottle refill unit with a spring release tap.

One of these units shall be selected based on available pedestrian access and needs of the sports club in that reserve.

For either unit, it must include:

- A drainage outlet (either internal or using a grate to adjacent garden bed or storm water drainage)
- Easy to clean and maintain surfaces and product
- Be tamper-resistant.

APPLICABLE LOCATION

Merri-Bek open space including sports areas and reserves.

COUNCIL STANDARD DRAWINGS

- B170.03 Park Wall-Mounted Drinking Fountain.

CROSS REFERENCE DOCUMENT

- N/A

STANDARD SPECIFICATION

Products: 'Apollo 280W' from Urban FF DDA wall-mounted unit.
'BF200W' from UrbanFF wall-mounted bottle filler.

Materials: stainless steel.

Provide separate conduit from mains water through the building wall using a small aperture and with a shut-off valve outside the building, near the drinking fountain. This shut-off valve shall be located no more than 2m from the drinking fountain.

Connect drainage outlet to adjacent garden bed, sump pit or stormwater drainage with spoon drain if required to avoid pooling over adjacent footpath.

SUPPLIER

UrbanFF or similar approved.

MAINTENANCE

Periodically check that drinking fountain is working. Address any issues including removal of debris from bubbler or leaking.

Ensure that drainage outlet is functioning correctly and that all bolts are secured.

GENERAL NOTES

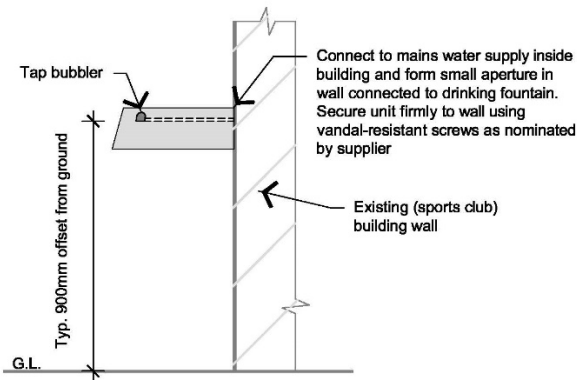
1. Refer also to manufacturer's installation manual.

B170.03 Park Wall-Mounted Drinking Fountain

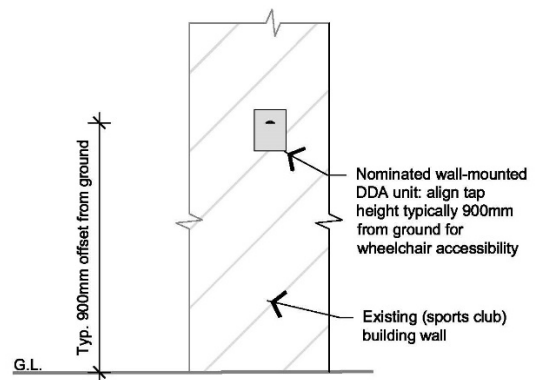
Note:

- Wall-mounted drinking fountain product and style can vary from shown. Preferred materials of main body include stainless steel with polished finish or powdercoated hot dipped galvanised steel. Product can either be DDA unit, extending outwards from wall or a slimline bottle-refill product.
 - All wall-mounted drinking fountains to be connected from mains water through building with separate stop-off valve outside building near fountain. Provide small aperture through wall for water conduit in preference to connection to external water meter.
 - Provide drainage outlet to divert to adjacent garden bed, sump pit or stormwater drainage (whichever is closest). Ensure that there are no overflows into the path of access. Where required provide spoon drain.
 - All plumbing to be performed only by a licenced plumber and supplied with a plumbers certificate upon completion.
 - Secure to wall using vandal-resistant security screws as nominated by supplier, in steel finish to match unit.
- All drinking fountains must be positioned to allow for universal access, not to interfere with pedestrian circulation or to be installed near corner of building wall.

Wall Mounted DDA Drinking Fountain

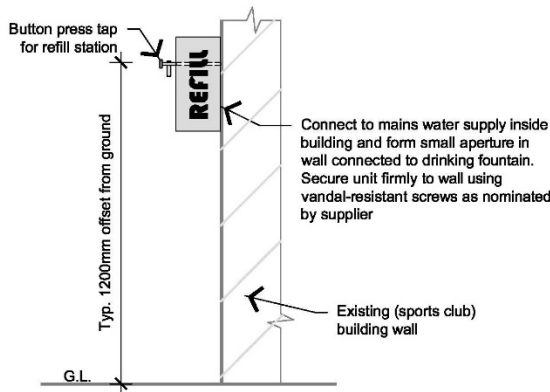


01 WALL-MOUNTED DDA DRINKING FOUNTAIN
Side Elevation 1:20

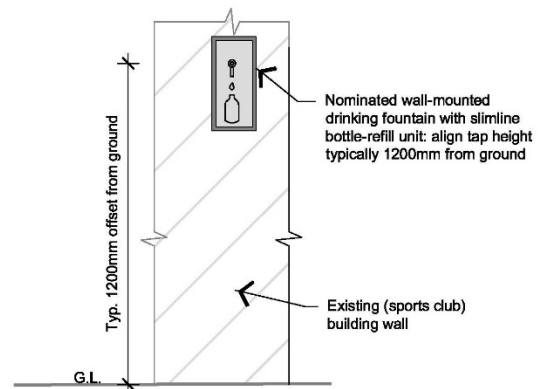


02 WALL-MOUNTED DDA DRINKING FOUNTAIN
Front Elevation 1:20

Wall Mounted Refill Drinking Fountain



01 WALL-MOUNTED REFILL DRINKING FOUNTAIN
Side Elevation 1:20



02 WALL-MOUNTED REFILL DRINKING FOUNTAIN
Front Elevation 1:20