

# Standard Bin Surround B140.01



## DESIGN STATEMENT

The customised bin offers a modern look, functional design, and durability with fully welded body and base.

Metallic gray bin surrounds and polished stainless steel lids provide a natural palette to the streetscape. Perforated metal and high quality paint deters and reduces impact of graffiti.

Ashtray which is integrated with the bin reduces the need to install cigarette butt bin separately.

Cover options should be chosen to suit local context such as the type of trash produced by nearby businesses.

## APPLICABLE LOCATION

All Merri-bek except for parks, for areas within Activity Centres and Shopping Strips.

## COUNCIL STANDARD DRAWING

N/A

## CROSS REFERENCE DOCUMENT

N/A

## STANDARD SPECIFICATION

**Type:** Merri-bek Standard Bin Surround (customised) from E.P Draffin: PN 88575 (120lt) or PN 88575/240 (240lt).

**Size:** Standard bin 120lt (L 600 x W 600 x H 1000 mm); Large bin 240lt (L 800 x W 700 x H 1100 mm) if specified.

**Logo:** Merri-bek logo on both sides. Additional blue plate is added inside the perforated Merri-bek logo.

**Body:** Lockable metal bin surrounds with laser cut pattern holes. 2-Pack Luxathane paint "Metallic silver".

**Canopy:** 5.0mm mild steel.

**Ashtray Insert:** Stainless steel mirror finish located at the front

**Opening option 1:** With round hole on the top – 2.0mm 316 stainless steel mirror finish.

**Opening option 2:** With pizza slot (frogmouth slot).

**Mounting:** Bolt-down.

## SUPPLIER

E.P. Draffin [www.draffin.com.au](http://www.draffin.com.au) or similar.

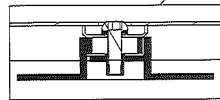
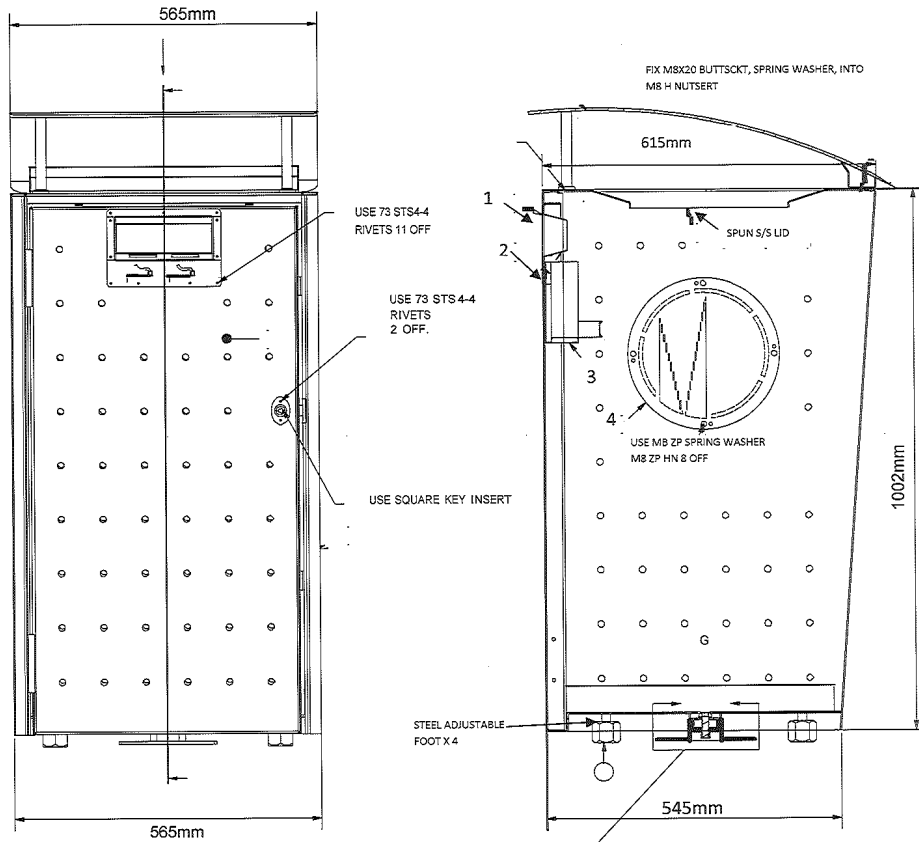
## MAINTENANCE

**Waste Services:** Bins are emptied at varying frequencies depending on location.

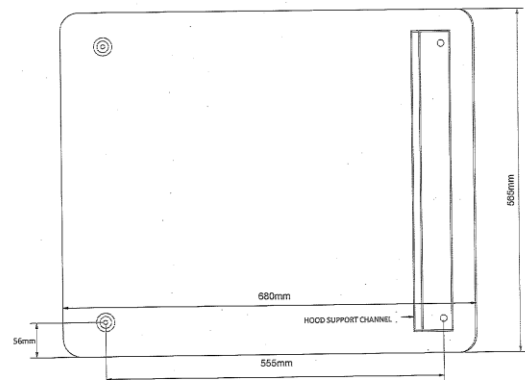
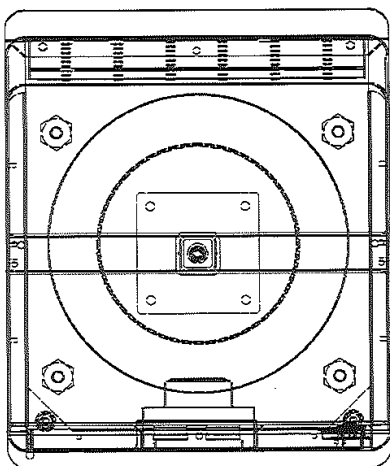
## GENERAL NOTES

1. Refer to manufacturer's installation manual

# B140.01 Standard Bin Surround



1	FORMED ASHTRAY RECEIVER
2	ASH TRAY HOOK/GUIDE
3	ASHTRAY LINER
4	LASER CUT LOGO BACKING PLATE LASER CUT LOGO PROTECTOR PLATE



Copyright: Draffin

October 2022