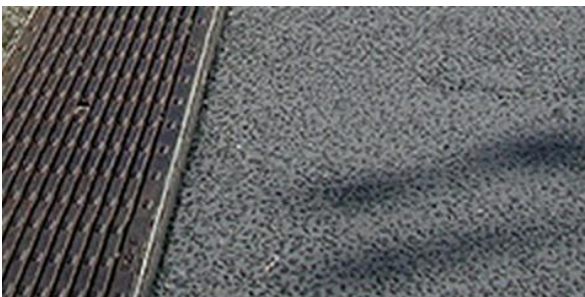

Stormwater Drain for Footpath A140.20



Brickslot for poured concrete or concrete pavers



Stainless steel trench grate for concrete pavement



Black Ironcast trench grate for asphalt pavement

DESIGN STATEMENT

Stormwater drain on footpath should be visually discrete, accessible, heel-safe and pram-friendly. Brickslot provides a discrete drainage solution which can be used for in-situ concrete and stone pavers. Grate trench can also be used as an alternative if larger capacity is required, the type should be chosen to approximately match the colour of the pavement.

APPLICABLE LOCATION

For stormwater drain located on footpaths, as specified.

Brickslot: for poured concrete and concrete pavers.

Stainless steel trench grate: for concrete and blue stone.

Cast iron trench grate: for asphalt.

COUNCIL STANDARD DRAWING

N/A

CROSS REFERENCE DOCUMENT

N/A

STANDARD SPECIFICATION

Brickslot: Use brickslot from ACO or similar product. 10mm wide slot to blend in with paving joints. Slot height is 690mm for maximum paver/concrete depth of 63mm. Use connector clip to align Brickslot joint. Allow access for maintenance to be located at both ends of the drain, at the outlet and spaced at 20-30 metres intervals.

Stainless steel trench grate: Use Stainless Steel Heel-safe from ACO or similar product.

Cast iron trench grate: Use Iron Intercept in black cast iron from ACO or similar product.

Fixing: Grates to be bolt down with anti-theft bolt and key provided to the maintenance department.

SUPPLIER

ACO Polycrete www.acodrain.com.au, or similar.

MAINTENANCE

Street Cleansing Unit: Cleaning will be undertaken as per current schedule.

GENERAL NOTES

1. All connection pipes from stormwater drain into pit system to be no smaller than 150mm diameter.

A140.20 Stormwater Drain for Footpath

Detail design would be site-specific.