

Cole Reserve South Sports Field Lighting Upgrade Project



Merri-bek
City Council

We want to let you know about improvements coming to Cole South Reserve.

In 2023, the Victorian State Government announced funding to upgrade the existing sports field lights at Cole Reserve South.

The aim is to provide well-lit sports grounds that encourages participation in sports and physical activity, reducing safety concerns and making sports grounds more accessible to the broader community.

What is the Cole Reserve South Sports Field Lighting Upgrade project?

The project involves new lighting of the Cole Reserve South that includes:

- Removal of existing light poles which aren't compliant with current Australian Standards.
- Install a minimum of 4 (maximum 6) new galvanised steel lighting poles at 28 metres high with 6 x 100 LUX LED lights on each pole.
- The upgraded lighting will allow rotation of training areas and consequently reduce the wear and tear of the surface, enabling participants to use the ground more often and keep active.
- The upgraded lights will illuminate larger areas of the oval and ensure compliance with Australian lighting standards.

- Achieve club competition lighting levels for AFL – minimum.
- Lighting levels at residential boundaries to be less than 10 lux, as per Australian Standards and certified by lighting engineer.



Image: Location of proposed poles in yellow.

Contact

Online

www.merri-bek.vic.gov.au/current-projects

In person

Coburg Civic Centre
90 Bell Street, Coburg 3058

More information

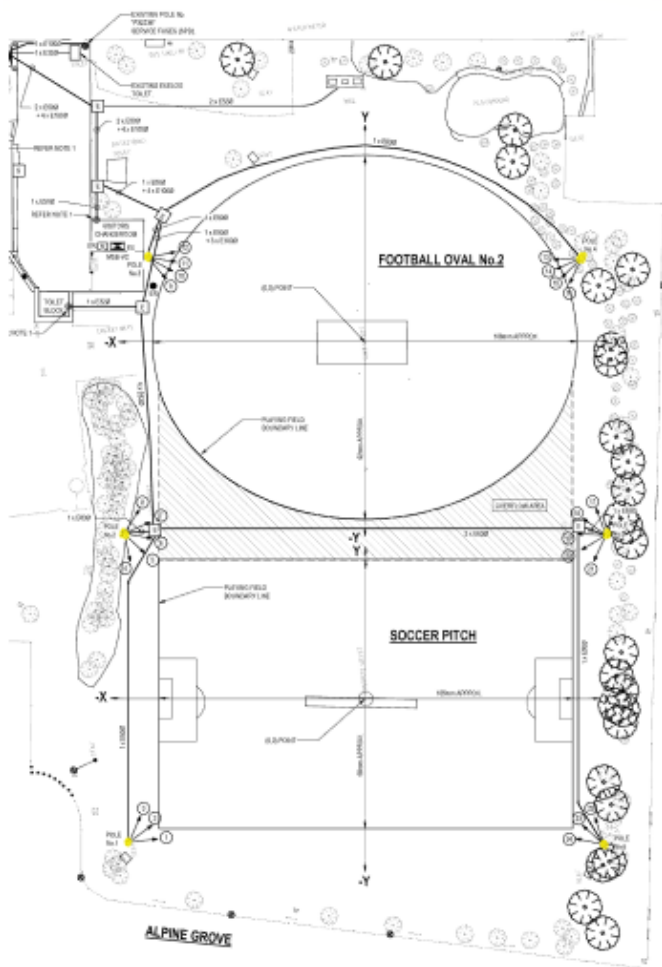
Sedat Sir - Sport and Recreation
Project Manager
Email: ssir@merri-bek.vic.gov.au
Ph: 9240 2266

Merri-bek Language Link

Italiano	Italian	9280 1911	Türkçe	Turkish	9280 1914
Ελληνικά	Greek	9280 1912	Tiếng Việt	Vietnamese	9280 1915
عربي	Arabic	9280 1913	पंजाबी	Nepali	9280 0751

普通话 Chinese (Simplified) 9280 0750

National Relay Service:
13 36 77 or relayservice.com.au



Above Images: Design for Cole South Reserve

What does LUX (lx) mean?

LUX is a measure of illuminance or the total amount of light that falls on a surface.

50 lux is equal to the light from a family living room.

1 lux is equal to the light of a single candle.

What are the benefits of LED Lighting?

- Energy Efficiencies – Conventional lighting consumes much more energy compared to LED lighting. Which relates up to 60% saving on energy bills.
- Long lasting asset to Council and Community – minimal maintenance
- Immediate brightness - Instant brightness when you turn on. LED has no warm-up time so full lights come on straight away.
- Spill Control - Traditional lighting shows an array of uneven lighting. LED lighting showcases a fine bright white light on the entire oval that can also be positioned differently, resulting in minimum spillage into the nearby environment and wildlife.

When will the lights be used at the reserve?

Sporting clubs use the facilities during the week for training and sporting competitions.

The proposed schedule of use will be:

Monday to Friday 5pm - 9pm from April - September (as per the Merri-bek City Council Sporting Facilities, Grounds and Pavilion User Guide).

When will the lighting upgrades work begin?

Works are scheduled to begin April 2024 and are expected to be complete by December 2024, weather permitting. There will be no disruption to the use of the reserve during this time.

Merri-bek Language Link

Italiano	Italian	9280 1911	Türkçe	Turkish	9280 1914	普通话	Chinese (Simplified)	9280 0750
Ελληνικά	Greek	9280 1912	Tiếng Việt	Vietnamese	9280 1915	National Relay Service: 13 36 77 or relayservice.com.au		
عربي	Arabic	9280 1913	नेपाली	Nepali	9280 0751			