

7.5 AMENDMENT C231MBEK - INTRODUCTION OF MOVING AROUND MERRI-BEK TRANSPORT STRATEGY AND THE MERRI-BEK OPEN SPACE STRATEGY - DECISION GATEWAY 3 - CONSIDERATION OF PANEL REPORT AND DECISION ON THE AMENDMENT

Director Place and Environment, Pene Winslade

City Strategy and Economy

Officer Recommendation

That Council:

1. Notes the findings and recommendations of the C231mbek Panel included at Attachment 1 to this report.
2. Adopts Amendment C231mbek to the Merri-bek Planning Scheme pursuant to Section 29(1) of the *Planning and Environment Act 1987*, as exhibited and with the changes recommended by the Planning Panel and discussed at Section 3 of this report and shown at Attachment 2.
3. Submits Amendment C231mbek to the Merri-bek Planning Scheme to the Minister for Planning for approval, pursuant to section 31 of the *Planning and Environment Act 1987*.
4. Endorses the updated Open Space Technical Report and 20-Year Open Space Projects List as shown at Attachments 2 and 3 to support the open space contribution rate review.
5. Notes that the Open Space Strategy will be updated with the corrected Open Space Framework Plan as shown at Attachment 2.

REPORT

Executive Summary

Amendment C231mbek seeks to introduce new policy direction from the endorsed *Moving Around Merri-bek* Transport Strategy and the *Merri-bek Open Space Strategy* into the Merri-bek Planning Scheme.

Council exhibited Amendment C231mbek from 18 July 2024 to 19 August 2024. The Amendment received a total of five submissions. Council resolved in September 2024 to request the Minister for Planning to appoint an Independent Panel to consider the submissions.

A Panel Hearing was held on 25 November 2024 and the report released to Council on 9 December 2024. The Panel report was supportive. The Panel noted that the Amendment was strategically justified and recommended that the Amendment be adopted subject to changes, including:

- Replacing Clause 02.04 Open Space and Transport Framework Plans with the versions in Appendix C to the Panel Report.
- Updating the Transport Framework Plan to correct any inaccurate bus routes.
- Update the Merri-bek Open Space Strategy and the Merri-bek Open Space Technical Report to ensure the Open Space Framework Plan matches the final Clause 0.204 version in Appendix C to the Panel Report.

It is recommended that Council adopt Amendment C231mbek with changes responding to recommendations of the Panel and discussed at Section 3 of this report and submit the Amendment to the Minister for Planning for approval.

Previous Council Decisions

Amendment C231mbek — Introduction of the Moving Around Merri-bek Transport Strategy and Merri-bek Open Space Strategy into the Merri-bek Planning Scheme – Decision Gateway 2 – 11 September 2024

That Council:

1. *Using its powers as a planning authority under s23(1) of the Planning and Environment Act 1987, requests that the Minister for Planning appoint an Independent Panel to consider all submissions to Merri-bek Planning Scheme Amendment C231mbek.*
2. *Endorses the responses to submissions as set out in Attachment 1 to this report to form the basis of Council's submission to an Independent Planning Panel.*
3. *Endorses the proposed changes to the Amendment documentation at Attachment 2 of this report.*
4. *Refers any late submissions to the Independent Panel.*
5. *Authorises the Director Place and Environment to consider any late submissions, make minor changes to Merri-bek Planning Scheme Amendment C231mbek and to give direction on issues which arise in the course of the Panel hearing in response to expert evidence and submissions if required.*

Amendment C231mbek – Introduction of the Moving Around Merri-bek Transport Strategy and Merri-bek Open Space Strategy into the Merri-bek Planning Scheme – Decision Gateway 1 – 10 April 2024

That Council:

1. *Using its powers as a planning authority under ss8A and 8B of the Planning and Environment Act 1987, seeks authorisation from the Minister for Planning to prepare Amendment C231mbek to the Merri-bek Planning Scheme as detailed in Section 3 of this report and in Attachment 1 to this report.*
2. *Following receipt of the Minister's authorisation, exhibits the Amendment in accordance with Section 19 of the Planning and Environment Act 1987 as outlined in the Consultation section of this report.*
3. *Authorises the Director Place and Environment to make changes to the Amendment to ensure consistency with the Council adopted version of the Merri-bek Open Space Strategy.*
4. *Authorises the Director Place and Environment to make changes to the Amendment based on conditions imposed in any authorisation granted by the Minister for Planning and to make minor changes.*

Adoption of New Merri-bek Open Space Strategy – 10 April 2024

That Council:

1. *Endorses as final the Merri-bek Open Space Strategy (Attachment 1) and associated Action Plan (Attachment 2), with the following changes to the Action Plan:*
 - a) *Insert a new action for 2024/25 in the Action Plan under Direction 1: Providing parks close to home and enhancing existing open spaces after action 1.9 to "Prepare a municipal-wide view of priority of gap areas in addition to the suburb by suburb view, in preparation for the refresh of the Park Close to Home Framework"*

- b) *Amend action 1.10 listed for 2025 to 2029 under Direction 1: Providing parks close to home and enhancing existing open spaces so that it reads “Refresh the Park Close to Home Framework to guide land acquisition and prioritisation of projects across Merri-bek, taking into account the Open Space Background Technical Report, the Merri-bek Strategic Property Framework, consideration of the Merri-bek Planning Scheme and ensuring the framework is practical to apply.”*
 - c) *Amend action 4.13 listed for 2024/25 in the Action Plan under Direction 4: Providing open space for everyone to add “d) consideration of whether additional land is required under the Park Close to Home Framework for new sporting facilities.”*
 - d) *Insert a new action for 2024/25 in the Action Plan under Enabling Actions after action 6.8 to “Develop and present to Council principles and a procedure to govern the management of the Public Resort and Recreation Land Fund so that it holds adequate funding to support significant strategic property purchases.”*
2. *Authorises the Director City Infrastructure to make minor editorial changes in finalising the documents for publication, including graphical design and numbering of actions, that do not change the meaning of the Strategy or Action Plan.*
 3. *Notes the Community Engagement Report (Attachment 3) detailing the methodology and findings of community engagement, including from the Hearing of Submissions, on the Merri-bek Open Space Strategy and Action Plan and thanks the community for their participation throughout the process of preparing the Open Space Strategy.*
 4. *Endorses the approach to open space planning represented in the Open Space Technical Background Report (Attachment 4) and 20-year Project List (Attachment 5), noting that these documents align with the Open Space Strategy and Action Plan.*

Moving Around Merri-bek – final Transport Strategy for consultation – 13 March 2024

That Council:

1. *Endorses as final the Transport Strategy Moving Around Merri-bek (Attachment 1) and associated Action Plan (Attachment 2) with the following changes:*
 - a) *Attachment 1 on page 5 delete the following sentence “We will continue to make sure those who need to drive are able to reach their destinations” and replace it with “We will make sure that trips not suited to walking, riding or public transport can still be made.”*
 - b) *Attachment 1 on page 39, amend “It is a key local door to door transport service that support people who are unable to drive or use public transport.” To read “It is a key local door to door transport service that support people who are unable to travel to local destinations independently.”*
 - c) *Attachment 1 on page 40 truncate the sentence “We need to make sure our driving network is safe for all road users and ensure that those who need to use a car, for personal use or freight delivery, are able to.” So that it reads “We need to make sure our driving network is safe and accessible for all road users.”*
 - d) *Attachment 1 on page 42, delete the dot point “People who need to use their car are supported” and replace with “The transport needs of businesses for freight consignment and deliveries are met” and add a new point “The access needs of people who experience transport disadvantage are met.”*
 - e) *Attachment 1 on page 39, add to “Improve bus services in Fawkner” the extra words “and the Newlands area of Coburg North”.*

2. *Refers to the 2024/25 Budget Process funding requests for the following two Action Plan items:*
 - a) *\$50,000 for expert advice to prepare a business case for pedestrian operated signals;*
 - b) *\$130,000 for development of a Streets for People plan.*
3. *Authorises the Director City Infrastructure to make minor editorial changes in finalising the documents for publication that do not change the meaning of the Strategy or Action Plan.*
4. *Notes the Community Engagement Report (Attachment 3) detailing the methodology and findings of community engagement, including from the Hearing of Submissions, on the Moving Around Merri-bek transport strategy and Action Plan.*
5. *Notes that Council is collecting traffic volume and speed data on Stockade Avenue and Pentridge Boulevard in Coburg, which will inform Council's submission to the Department of Transport and Planning to advocate for reconsideration of speed limits, and that Council will also investigate the travel patterns of concrete trucks using the route and then work with consigners and receivers of the material in the vicinity on ways to minimise their impact on residential amenity.*

1. Policy context

The *Council Plan 2021-2025* (Council Plan) aims to create an environmentally proactive Merri-bek, a Merri-bek that allows people to move and live safely in vibrant spaces and places.

The Merri-bek Planning Scheme (Planning Scheme) underpins delivery of the Council Plan by directing land use and development in Merri-bek. Introducing new content into the Municipal Planning Strategy (MPS) and Planning Policy Framework (PPF) to support implementation of *Moving Around Merri-bek* (Transport Strategy) and the *Merri-bek Open Space Strategy* (Open Space Strategy) aligns with the following themes of the Council Plan:

- Theme 4 – Vibrant spaces and places in Moreland.
- Theme 3 – A healthy and caring Moreland.
- Theme 2 – Moving and living safely in Moreland.
- Theme 1 – An environmentally proactive Moreland.

Transport

Existing State planning policy includes important strategies about supporting sustainable and active transport.

Clause 18.01-S includes an objective to *facilitate an environmentally sustainable transport system that is safe and supports health and wellbeing*. Strategies to support this objective include:

- *Prioritise the use of sustainable personal transport.*
- *Protect, conserve, and improve the natural environment by supporting forms of transport, energy use, and transport technologies that have the least environmental impact.*
- *Plan the transport system to be safe by:*
 - *Separating pedestrians, bicycles, and motor vehicles, where practicable.*
 - *Reducing the need for cyclists to mix with other road users.*
 - *Design development to promote walking, cycling, and the use of public transport, in that order, and minimise car dependency.*

There are specific clauses relating to increasing the proportion of trips made by walking, cycling and public transport across the State.

Open space

Clause 19.02-6S includes an objective *to establish, manage, and improve diverse and integrated network of public open space that meets the needs of the community.*

Strategies to support this objective include:

- *Ensure that urban open space provides for nature conservation, recreation and play, formal and informal sport, social interaction, opportunities to connect with nature and peace and solitude.*
- *Ensure land identified as critical to the completion of open space links is transferred for open space purposes.*
- *Improve the quality and distribution of open space and ensure long-term protection.*
- *Develop open space to maintain wildlife corridors and greenhouse sinks.*
- *Ensure open space provision is fair and equitable with the aim of providing access that meets the needs of all members of the community, regardless of age, gender, ability or a person's location.*

2. Background

In April 2024, Council resolved to seek the Minister's authorisation to prepare the Amendment and following receipt of authorisation, to exhibit the Amendment. The Minister's authorisation to exhibit the Amendment was received on 14 June 2024.

The Amendment was publicly exhibited from 18 July to 19 August 2024 and five submissions were received. Key themes raised in submissions included:

- Suggested changes to Clause 02.04 Transport Framework Plan regarding some Strategic Cycling Corridor (SCC) links shown as local cycling links and a typo in the Plan's legend.
- Concerns about the development of the Transport Strategy and its implementation.
- Concerns about the exhibition process for the Amendment.

On 11 September 2024, Council endorsed changes to the Amendment in response to submissions. Council also resolved to request the Minister for Planning to appoint a Planning Panel to consider submissions to the Amendment.

A Panel Hearing was held via video conference on 25 November 2024. The report of the Panel was received on 9 December 2024 and released to the public on 20 December 2024.

3. Issues

Panel recommendations

The Panel recommended the Amendment be adopted as exhibited, subject to changes. The Panel found that the Amendment is well founded and strategically justified and that both the Merri-bek Open Space Strategy and Moving Around Merri-bek Transport Strategy which underpin the Amendment are comprehensive, robust documents that are supported by detailed analysis.

This section provides a summary of the Panel's three recommended changes, and an officer response to each proposed change. A copy of the Panel report is provided at **Attachment 1**.

| Recommendations of the Panel | |
|-----------------------------------------------------------------------------------------------------|------------------------------------------------------------------------------------------------------------------------------------------------------------------------------------------------------------------------------------------------------------------------------------------------------------------------------------------------------------------------------------------------------------------------------------------------------------------------------------------------------------------------------------------------------------------------------------------------------------------------------------------------------------------------------------------------------------------------------------------------------------------------------------------------------------------------------------------------------------------------------------------------------------------------------------------------------------------------------------------------------------------------------------------------------------------------------------------------------------------------------------------------------------------------------------------------------------------------------------------------------------------------------------------------------------------------------------------------------------------|
| Recommendation | Council officer response |
| 1(a) Replace Clause 02.04 Open Space and Transport Framework Plans with the versions in Appendix C. | <p>The version of Clause 02.04 Transport Framework Plan shown at Appendix C of the Panel Report incorporates changes endorsed by Council at its meeting of 11 September 2024 in response to submissions. These changes are:</p> <ul style="list-style-type: none"> ▪ Correctly showing the following local bike routes as part of the SCC: <ul style="list-style-type: none"> ○ O’Hea Street between Turner and Sussex Streets. ○ O’Hea Street between Sydney Road and the rail line. ○ Portion of link through De Chene Reserve connecting to Connolly Avenue, Coburg. ▪ Replace the word ‘buses’ with ‘bus’ in the legend. <p>The version of Clause 02.04 Open Space Framework Plan shown at Appendix C incorporates changes proposed by Council officers during the Panel Hearing to correct an error in the extent of the open space gap area identified along the Sydney Rail Line Easement. The changes include:</p> <ul style="list-style-type: none"> ▪ Correctly identifying land under the existing rail bridge as part of the existing regional open space network and not an open space gap area. ▪ Refining the open space gap area along the existing rail easement. <p>Council officer recommendation: Support Panel recommendation 1(a)</p> |
| 1(b) Update the Transport Framework Plan to correct any inaccurate bus routes. | <p>This recommendation is in response to Council officers raising during the Panel Hearing a potential bus route mapping error that required further follow up. This was in relation to Bus Route 509 not being shown on the Framework Plan. Council officers have since investigated the issue and confirmed that Bus Route 509 was not intended to be included on the Framework Plan. The purpose of the Framework Plan is to show only higher frequency routes and routes that have good connection to other forms of public transport. There are a number of bus routes not shown on the Plan and as Bus Route 509 is a very small route that doesn’t run with high frequency it is considered appropriate that it is not included on the Framework Plan.</p> <p>Council officer recommendation: Panel recommendation 1(b) not supported. No inaccuracies found so no need to update Plan.</p> |

| | |
|-------------------------------------------------------------------------------------------------------------------------------------------------------------------------------------------|--------------------------------------------------------------------------------------------------------------------------------------------------------------------------------------------------------------------------------------------------------------------------------------------------|
| 1(c) Update the Merri-bek Open Space Strategy and the Merri-bek Open Space Technical Report to ensure the Open Space Framework Plan matches the final Clause 02.04 version in Appendix C. | <p>This recommendation is in response to Recommendation 1(a) and ensures all documentation related to the Amendment is updated to show the changes made to the Open Space Framework Plan.</p> <p>Council officer recommendation: <i>Support Panel recommendation 1(c)</i></p> |
|-------------------------------------------------------------------------------------------------------------------------------------------------------------------------------------------|--------------------------------------------------------------------------------------------------------------------------------------------------------------------------------------------------------------------------------------------------------------------------------------------------|

Changes to the Open Space Background Technical Report

The C231mbek amendment documentation includes the Open Space Background Technical Report (Technical Report).

The Technical Report was an important input to the Open Space Strategy, and provided the analysis and assessment of existing and future open space needs. It also created a new open space gaps framework.

The Technical Report also includes a list of key open space projects at a suburb and municipal level over the next 20-years (The Projects List).

The Projects List is an aspirational program that guides investment and development in Merri-bek's open space network over the next two decades to meet the Open Space Strategy objectives and the Technical Report's identified gaps and recommendations.

The Projects List includes projects such as land acquisition to create a new open space, upgrades to existing open spaces such as playgrounds, facilities for dogs, enhancements to sports grounds and works to increase accessibility such as new shared user paths.

The Technical Report and the Projects List also provides the strategic basis for a revised Public Open Space Contribution Rate (POSC Rate). This review is currently underway.

Some minor updates have been made to the Technical Report since exhibition of the amendment. Updates to the Technical Report include:

- Inclusion of text and list on pages 111 and 112 relating to municipal-wide projects.
- Updating text in Section 8 (pages 113-309) to reflect updated forecast population data, settlement patterns and building typology prepared for Council by Quantify Insights.
- Inclusion of reference to updated Council strategic documents, such as the Play Space Guidelines, Nature Play Action Plan, Food System Strategy 2024, Moving Around Merri-bek Transport Strategy and Action Plan, and Strategic Property Framework 2023.
- Changes to the tables within Section 8 (namely Tables 1-7 for each suburb on pages 113-309) to capture formatting changes, updates to forecast data, and changes to the List.
- Changes to the Projects List (see below for more detail).
- Updates to the Gaps Analysis mapping in Section 7 and Appendix – Profile maps to correct the error identified by Council staff regarding the identification of an open space gap area along the Sydney Rail Line easement.

Council officers consider the changes to the Technical Report and the Projects List are inconsequential and it is appropriate to update them at this stage of the amendment. The changes to the Technical Report are sensible and reflect the most current statistical data available. No changes have been made to any of the key recommendations or findings throughout the Technical Report. The Technical Report forms only a background document to the Amendment due to it being an input into the Open Space Strategy. The role of a background document is to provide information as to why particular requirements are in the planning scheme or provide background to a provision. It does not form part of the planning scheme or the decision-making process.

Updates to the Projects List resulted from the Open Space Branch reviewing the Projects List to include additional projects, as well as updating project costs because of more detailed design work being undertaken. Changes to the Projects List ensure projects are costed appropriately as well as ensuring it is robust and reflects the identified gaps and recommendations in the Open Space Strategy objectives and the Technical Report. Specifically, the changes made to the Projects List include:

- Inclusion of 14 additional projects (noted as 'new' in the Projects List at Attachment 3)
- Updates to the projects identified along the Moonee Ponds Creek (Open Space Improvements).
- Increase in the costings of 42 projects to align with an increase in the standard costs to deliver pocket parks/small neighbourhood parks.
- Increase to the costings of 33 projects to align with an increase in the standard costs to deliver a local or neighbourhood park upgrade.
- Increase in the costings of 9 projects to align with an increase in the standard costs to deliver a new pocket park upgrade.
- An increase in the cost of seven projects where costs to deliver the projects have increased or new costs added (because of more detailed design being undertaken).
- A decrease in the cost of one project to align with confirmed construction costs.

Revised versions of the Technical Report and the Projects List are provided at Attachments 2 and 3.

Other changes required to the Amendment

As a revised version of the Technical Report has been prepared, the following changes to the Amendment are proposed in response. These changes are included at Attachment 2.

| Affected Planning Policy | Proposed Change |
|---------------------------------------------------------------------------------------------------|------------------------------------------------------------------------------------------------------------------------------------------------------------|
| Clause 19.02-6L Open Space in Merri-bek, Clause 72.08 Background documents and Explanatory Report | Update reference to new version of the Technical Report as follows: <i>Merri-bek Open Space Strategy Technical Report</i> (Mesh Planning, January 2025) |

Human Rights Consideration

The implications of this report have been assessed in accordance with the requirements of the Charter of Human Rights and Responsibilities and there are no adverse impacts. The human rights considered as part of the preparation of this report relate specifically to freedom, dignity, and equity.

The most relevant section of the Victorian Charter of Human Rights to the preparation of this report is property rights. This report does not deprive any party of any legal or proprietary interest in land, or the ability to use and develop that land in accordance with the planning regulatory framework.

Gender Equality Considerations

A gender impact assessment has not been undertaken for the Amendment because it does not relate to a new policy, program, or service that directly or significantly impacts on the public. The changes proposed through the Amendment introduce policy directions that implement Council adopted strategies and seek to improve planning outcomes throughout Merri-bek, for the benefit of everyone.

4. Community consultation and engagement

Amendment C231mbek was publicly exhibited from 18 July 2024 to 19 August 2024. In accordance with Section 19 of the *Planning and Environment Act* (the Act), notice of the Amendment via direct mail was given to:

- People who provided feedback on the draft Transport Strategy and Open Space Strategy.
- Relevant state government departments and Ministers.
- All abutting Municipal Councils.

To comply with other notice requirements in section 19 of the Act and to reach the wider community, the following was provided throughout the exhibition process:

- Notice of the preparation of the Amendment in *The Age* and *Herald Sun* on 16 July 2024 and the Government Gazette on 18 July 2024.
- Copies of the Amendment documentation were available on Council's website and hard copies were made available to residents upon request.
- Social media posts (Facebook) on 18 July 2024.

Under section 19(1A) of the Act, it was considered impractical to individually notify owners and occupiers throughout the municipality of changes proposed by the Amendment.

5. Officer Declaration of Conflict of Interest

Council officers involved in the preparation of this report have no conflict of interest in this matter.

6. Financial and Resources Implications

Financial

Administrative costs associated with the processing of the amendment will be met within the base budget of the Strategic Planning Unit.

Resources

The amendment is likely to come into effect in the 2025/26 financial year. The impacts on the Urban Planning Unit will be minimal as the amendment does not introduce any new planning permit requirements that would trigger the need for a planning permit.

7. Implementation

The following timelines for the Amendment are broken down into key 'decision gateways.'

Decision Gateway 1: Authorisation and Exhibition (Completed)

Decision Gateway 2: Submission Review and Panel Request (Completed)

Decision Gateway 3: Review Panel report and consider adoption of the Amendment.

The following timeframes may change as it is subject to Ministerial approval times.

- February 2025: Report on the Panel's recommendations and consider adoption of the final version of the Amendment.
- February 2025: Submission of the Amendment to the Minister for Planning for approval.
- June/July 2025: Anticipated approval by the Minister for Planning.

Attachment/s

| | | | |
|----|----------------------------------------------------|-----------|----------------------|
| 1↓ | Amendment C231mbek Panel Report | D25/34829 | Under Separate Cover |
| 2↗ | Amendment C231mbek Documents | D25/34904 | |
| 3↓ | Amendment C231mbek - Revised 20-year Projects List | D25/35605 | |

**Planning
Panels
Victoria**

**Merri-bek Planning Scheme Amendment C231mbek
Merri-bek Transport and Open Space policy**

Panel Report

Planning and Environment Act 1987

9 December 2024



How will this report be used?

This is a brief description of how this report will be used for the benefit of people unfamiliar with the planning system. If you have concerns about a specific issue you should seek independent advice.

The planning authority must consider this report before deciding whether to adopt the Amendment.

[section 27(1) of the *Planning and Environment Act 1987* (the PE Act)]

For the Amendment to proceed, it must be adopted by the planning authority and then sent to the Minister for Planning for approval.

The planning authority is not obliged to follow the recommendations of the Panel, but it must give its reasons if it does not follow the recommendations. [section 31 (1) of the PE Act, and section 9 of the *Planning and Environment Regulations 2015*]

If approved by the Minister for Planning a formal change will be made to the planning scheme. Notice of approval of the Amendment will be published in the Government Gazette. [section 37 of the PE Act]

Planning Panels Victoria acknowledges the Wurundjeri Woi Wurrung People as the traditional custodians of the land on which our office is located. We pay our respects to their Elders past and present.

Planning and Environment Act 1987

Panel Report pursuant to section 25 of the PE Act

Merri-bek Planning Scheme Amendment C231mbek

Merri-bek Transport and Open Space policy

9 December 2024



Tim Hellsten, Chair

Contents

| | Page |
|----------------------------------------------------------------------------------------------------------|-----------|
| Executive summary | 6 |
| 1 Introduction..... | 8 |
| 1.1 The Amendment..... | 8 |
| 1.2 Background | 8 |
| 1.3 Procedural issues | 10 |
| 1.4 The Panel's approach | 10 |
| 2 Strategic issues and justification | 12 |
| 2.1 Planning context | 12 |
| 2.2 Background | 12 |
| 2.3 The issues | 16 |
| 2.4 Submissions..... | 16 |
| 2.5 Discussion..... | 18 |
| 2.6 Conclusion and recommendation | 21 |
| 3 Process issues | 22 |
| 3.1 The issues | 22 |
| 3.2 Submissions..... | 22 |
| 3.3 Discussion..... | 23 |
| 3.4 Conclusion | 24 |
| Appendix A Document list..... | 25 |
| Appendix B Planning context..... | 26 |
| B:1 Planning policy framework..... | 26 |
| B:2 Other relevant planning strategies and policies | 27 |
| B:3 Ministerial Directions, Planning Practice Notes and guides | 28 |
| Appendix C Council's final version of Clause 02.04 Open Space and Transport Framework Plans | 29 |

List of Tables

| | Page |
|-----------------------------------------------|------|
| Table 1 Chronology of events | 9 |
| Table 2 Planning context | 12 |
| Table 3 Relevant parts of Plan Melbourne..... | 27 |

List of Figures

| | Page |
|----------------------------------------------------------------|------|
| Figure 1 Amended Clause 02.04 - Open Space Framework Plan..... | 15 |
| Figure 2 Amended Clause 02.04 - Transport Framework Plan..... | 16 |
| Figure 3 Merri-bek Transport System | 20 |

Glossary and abbreviations

| | |
|-----------------------------|----------------------------------------------------------------------------------------------------------------------------------|
| Council | Merri—bek City Council |
| Council Plan | <i>Council Plan 2021-2025</i> (Moreland City Council) |
| DTP | Department of Transport and Planning |
| JWS Research Report | <i>Understanding transportation perception and behaviours in the City of Merri-bek: Research Report</i> (JWS Research, May 2023) |
| MITS | <i>Moreland Integrated Transport Strategy 2019</i> (Moreland City Council, March 2019) |
| MOSS | <i>Moreland Open Space Strategy 2012-2022</i> (Moreland City Council, 2012) |
| MPS | Municipal Planning Strategy |
| Open Space Strategy | <i>Merri-bek Open Space Strategy</i> (Merri-bek City Council, April 2024) |
| Open Space Technical Report | <i>Merri-bek Open Space Strategy Technical Report</i> (Mesh Planning, March 2024) |
| PE Act | <i>Planning and Environment Act 1987</i> |
| PPF | Planning Policy Framework |
| Transport Strategy | <i>Moving Around Merri-bek: Transport Strategy</i> (Merri-bek City Council, March 2024) |

Merri-bek Planning Scheme Amendment C231mbek | Panel Report | 9 December 2024

Overview

Amendment summary

| | |
|--------------------|---------------------------------------------------------------------------------------------------------------------------------------------------------------------------------------------------------------------------------------------------------------------------------------------------------------------------|
| The Amendment | Merri-bek Planning Scheme Amendment C231mbek |
| Common name | Merri-bek Transport and Open Space policy |
| Brief description | Give planning policy effect to the 'Moving Around Merri-bek: Transport Strategy, March 2024' and the 'Merri-bek Open Space Strategy, April 2024' in the Municipal Planning Strategy and Planning Policy Framework |
| Subject land | All land within the municipality of Merri-bek |
| Planning Authority | Merri-bek City Council |
| Authorisation | 14 June 2024, with conditions |
| Exhibition | 18 July to 19 August 2024 |
| Submissions | Number of Submissions: 5 Opposed or seeking changes: 3 <ol style="list-style-type: none"> 1. Department of Energy, Environment and Climate Action 2. Department of Transport and Planning 3. Pauline Carmichael 4. Marion Attwater 5. Merri Creek Management Committee |

Panel process

| | |
|------------------------|--------------------------------------------------------------------------------------------------------------------------------------------------------------------------------------------------------------------------------------------------------------------|
| The Panel | Tim Hellsten (Chair) |
| Directions Hearing | By video, 28 October 2024 |
| Panel Hearing | By video, 25 November 2024 |
| Site inspections | Nil |
| Parties to the Hearing | Merri-bek City Council represented by Angela Schirripa (Unit Manager Strategic Planning), Neeraj Dangol (Strategic Planner), Nia Kolokas (Acting Principal Strategic Planner) and Vaughn Allan (Strategic Transport Lead) Pauline Carmichael Marion Attwater |
| Citation | Merri-bek PSA C231mbek [2024] PPV |
| Date of this report | 9 December 2024 |

Executive summary

Merri-bek Planning Scheme Amendment C231mbek (the Amendment) seeks to give planning policy effect to two strategies prepared by Merri-bek City Council – the *Moving Around Merri-bek: Transport Strategy*, March 2024 (Transport Strategy) and the *Merri-bek Open Space Strategy*, April 2024 (Open Space Strategy) in the Merri-bek Planning Scheme.

The Amendment:

- introduces new or amended local policies into the Municipal Planning Strategy and Planning Policy Framework
- amends the list of background documents to include the Transport Strategy and Open Space Strategy and delete older transport and open space strategy references.

The Amendment was exhibited from 18 July to 19 August 2024 and five submissions were received. Two of these, Department of Energy, Environment and Climate Action and the Merri Creek Management Committee, supported the Amendment without changes. The submissions opposing the Amendment or seeking changes to it raised the following key issues:

- strategic issues:
 - whether the Open Space Strategy and Transport Strategy are appropriate
 - mapping of strategic cycling corridors and bus routes in the Transport Framework Plan
- process issues:
 - whether appropriate notice of the Amendment was given
 - the process of considering strategy and amendment submissions
 - consideration of the *Charter of Human Rights and Responsibilities Act 2006*
 - community engagement in the selection of Streets for People transport projects.

Because there were few opposing submissions, and these generally raised matters outside the scope of the Amendment or matters of a non-complex nature an in-person Hearing was not conducted. Parties agreed to an online hearing process.

The Panel considers that both the Open Space Strategy and Transport Strategy which underpin the Amendment are comprehensive, robust documents that are supported by detailed analysis. Their role as background documents is appropriate.

The Panel concludes that the Amendment:

- is supported by, and implements, the relevant sections of the Planning Policy Framework
- is consistent with the relevant Ministerial Directions and Practice Notes
- is well founded and strategically justified and should proceed subject to changes:
 - changes to the Open Space and Transport Framework Plans to correct minor errors
 - confirming identified bus routes are accurate
 - updating the background documents to ensure the Open Space mapping matches the final Clause 02.04 version.

In relation to process issues raised in submissions these were either:

- not relevant to the planning merits of the Amendment
- outside the scope of the Amendment
- overstated or without sufficient foundation to impact the Amendment.

The Panel concludes:

- Appropriate notice was given of the Amendment.
- The Amendment will provide a net community benefit and sustainable development outcomes.

Recommendations

Based on the reasons set out in this Report, the Panel recommends:

- 1. Merri-bek Planning Scheme Amendment C231mbek be adopted as exhibited, subject to:**
 - a) replacing the Clause 02.04 Open Space and Transport Framework Plans with the versions in Appendix C**
 - b) updating the Transport Framework Plan to correct any inaccurate bus routes**
 - c) update the Merri-bek Open Space Strategy and the Merri-bek Open Space Technical Report to ensure the Open Space Framework Plan matches the final Clause 02.04 version in Appendix C.**

1 Introduction

1.1 The Amendment

(i) Amendment description

The purpose of the Amendment is to give planning policy effect to two strategies prepared by Merri-bek City Council (Council) in the Merri-bek Planning Scheme:

- *Moving Around Merri-bek: Transport Strategy*, March 2024 (Transport Strategy)
- *Merri-bek Open Space Strategy*, April 2024 (Open Space Strategy).

Specifically, the Amendment proposes to:

- amend Clause 02.03-7 (Transport) by replacing the existing content consistent with the Transport Strategy
- amend Clause 02.03-8 (Infrastructure) by replacing the existing content consistent with the Open Space Strategy
- amend Clause 02.04 (Strategic framework plans) by:
 - updating the Transport Strategic Framework Plan to show revised biked routes, including identifying bike routes as local routes or part of the Strategic Cycling Corridor
 - updating the Open Space Strategic Framework Plan to show a hierarchy of different public open space areas and revised locations for open space gap areas
- delete Clause 18.02-1L (Walking in Merri-bek) which becomes redundant
- amend Clause 18.02-2L (Cycling in Merri-bek) to remove a strategy that supported the *Moreland Integrated Transport Strategy 2019* (MITS)
- delete Clause 18.02-3L (Public Transport in Merri-bek) which becomes redundant
- amend Clause 19.02-6L (Open space in Merri-bek) to include strategies and policy guidelines consistent with the Open Space Strategy and identify the Open Space Strategy and *Merri-bek Open Space Strategy Technical Report*, *Mesh Planning*, March 2024 (*Open Space Technical Report*) as policy documents
- amend the Schedule to Clause 72.08 (Background documents) by:
 - removing references to the MITS and the Moreland Open Space Strategy 2012-2022 (MOSS)
 - including references to the Transport Strategy, Open Space Strategy and Open Space Strategy Technical Report.

The Amendment applies to all land within the Merri-bek municipality.

1.2 Background

(i) Moving Around Merri-bek

The Transport Strategy is a long-term strategic document that will guide the way Council manages and makes changes to Merri-bek's transport system or advocate in relation to it. It was informed by a social research report and discussion paper and follows extensive community consultation and engagement.

(ii) Merri-bek Open Space Strategy

The Open Strategy and the accompanying Open Space Technical Report provide a strategic framework for the development and management of Merri-bek's existing and future open space network. The documents analyse the key influences, challenges, gaps in provision and emerging trends impacting Merri-bek's open space network including forecasting Merri-bek's residential and worker population growth and key areas of densification within the municipality.

(iii) Chronology of events

Council's Part A submission included a chronology of events which is summarised by the Panel in Table 1.

Table 1 Chronology of events

| Date | Event |
|----------------------------|-----------------------------------------------------------------------------------------------------------------------------------------------------------------------------------------------------------------------------------------------------------------------------------------------------------------------------------------|
| Transport Strategy | |
| 14 April 2021 | Council resolved to undertake a review of the MITS |
| May 2023 | <i>Understanding transportation perception and behaviours in the City of Merri-bek: Research Report</i> , JWS Research, May 2023 (JWS Research Report) prepared to understand transport uses, barriers, and options for different cohorts and neighbourhoods in Merri-bek |
| July – Sep 2023 | <i>Moving Around Merri-bek Discussion Paper</i> finalised for community engagement and which identified six core themes and possible actions for inclusion in the draft Transport Strategy. Community engagement included community pop-ups, discussion with key stakeholders, surveys and focused workshops. Over 530 surveys received |
| Nov – Dec 2023 | Community engagement on draft Transport Strategy and Action Plan including municipal wide property owner/occupier letters, online project information and surveys. 255 surveys completed and 12 submissions received |
| Jan 2024 | Council submissions hearing |
| 13 Mar 2024 | Council endorsed Transport Strategy and associated 2024/25 Action Plan (subject to changes) and the approach taken to the 20-year Project List and Transport Technical Report |
| Open Space Strategy | |
| Jun 2022 | Work on Merri-bek Open Space Strategy commenced |
| Apr 2023 | Council prepared a 'Background and Discussion Paper' which summarises open space opportunities and challenges |
| Apr – June 2023 | Phase 1 community engagement undertaken comprising workshops, targeted discussions with community groups, park and open space pop-ups, online engagement. Over 900 people engaged |
| July 2023 | Mesh Planning engagement to prepare Open Space Technical Report which assessed existing and future open space needs for Merri-bek and identified a 20-year Projects List |
| 6 Dec 2023 | Council endorsed draft Open Space Strategy, Open Space Technical Report (and Projects List) for community engagement purposes |

Merri-bek Planning Scheme Amendment C231mbek | Panel Report | 9 December 2024

| Date | Event |
|----------------------|----------------------------------------------------------------------------------------------------------------------------------------------------------------------------------------------------------------------------------------------------------------------------------------------------------------------------------------------------------------------------|
| 16 Jan – 20 Feb 2024 | Phase 2 community engagement undertaken comprising in-person information sessions, project website information, surveys. 26 submissions received |
| Feb 2024 | Council submissions hearing |
| 10 Apr 2024 | Council endorses Open Space Strategy and Action Plan (subject to changes) and the approach taken to the Open Space Technical Report and 20-year Project List |
| Amendment | |
| 10 Apr 2024 | Council resolved to seek authorisation from the Minister for Planning to prepare and exhibit the Amendment |
| 14 Jun 2024 | Amendment authorised under delegation subject to 2 conditions relating to: <ul style="list-style-type: none"> - correcting references to the Open Space Strategy Technical Report in the Amendment documentation - including identified changes to the Explanatory Report Council's Part A submission set out how these conditions were satisfied. |
| 18 Jul – 19 Aug 2024 | Amendment exhibited |
| 11 Sep 2024 | Council considered submissions and referred them to Panel |

1.3 Procedural issues

Council requested the matter be considered through the exchange of written documents rather than a hearing. The reasons given included that there were only a few opposing submissions and these raised matters generally out of scope of the Amendment. Before considering this request, the Panel wrote to all parties advising of Council's request and inviting submissions on the issue, either in writing or at the Directions Hearing.

At the Directions Hearing, the two submitter parties did not support Council's request and preferred an online hearing process. The Panel agreed to an online Hearing to ensure procedural fairness and transparency.

1.4 The Panel's approach

Key issues raised in submissions were:

- whether the Open Space Strategy and Transport Strategy are appropriate documents to introduce into the Merri-bek Planning Scheme
- mapping of strategic cycling corridors and bus routes in the Transport Framework Plan
- whether appropriate notice was given of the Amendment
- the process of considering submissions to the Open Space and Transport Strategy and the Amendment
- consideration of the *Charter of Human Rights and Responsibilities Act 2006*
- community engagement in the selection of Streets for People transport projects.

Submissions from the Department of Energy, Environment and Climate Action and Merri Creek Management Committee supported the Amendment without changes.

The Panel has assessed the Amendment against the principles of net community benefit and sustainable development, as set out in Clause 71.02-3 (Integrated decision making) of the Planning Scheme. The Panel considered all written submissions made in response to the exhibition of the Amendment, submissions and other material presented to it during the Hearing. It has had to be selective in referring to the more relevant or determinative material in the Report. All submissions and materials have been considered by the Panel in reaching its conclusions, regardless of whether they are specifically mentioned in the Report.

This Report deals with the issues under the following headings:

- Planning context
- Strategic issues and justification
- Process issues.

2 Strategic issues and justification

2.1 Planning context

Table 2 summarises the planning context relevant to the Amendment. Appendix B highlights key imperatives of relevant provisions and policies.

Table 2 Planning context

| | Relevant references |
|-----------------------------------------------|------------------------------------------------------------------------------------------------------------------------------------------------------------------------------------------------------------------------------------------------------------------------------------------------------------------------------------------------------------------------------------------------------------------------------------------------------------------------------------------------------------------------|
| Victorian planning objectives | - section 4 of the PE Act |
| Municipal Planning Strategy | - Clause 2.03-7 (Transport) - Clause 02.03-8 (Infrastructure) - Clause 02.04 (Strategic framework plans) |
| Planning Policy Framework | - Clauses 18.01-1S (Land use and transport integration), 18.01-2S (Transport system), 18.01-2S (Sustainable and safe transport), 18.02-2S (Cycling) and 18.02-2L (Cycling in Merri-bek) - Clauses 19.02-6S (Open Space), 19.02-6R (Open Space), 19.02-6L (Open space in Merri-bek) |
| Other planning strategies and policies | - Plan Melbourne Outcomes 3,4, 5 and 6; Directions 3, Policies 3.1.6, and 3.3.2, Directions 4.1 and 4.3, Policies 4.1.2 and 4.1.3; Direction3 5.2 and 5.4, Policy 5.4.1; Directions 6.4 and 6.5, Policies 6.4.1 and 6.5.1 - <i>Open Space for Everyone: Open Space Strategy for Metropolitan Melbourne 2021</i> (Department of Environment, Land, Water and Planning, 2021) - <i>Moreland Integrated Transport Strategy</i> , March 2019 (MITS) - <i>Moreland Open Space Strategy 2012-2022</i> , 2012 (MOSS) |
| Ministerial directions | - Ministerial Direction on the Form and Content of Planning Schemes under Section 7(5) of the Planning and Environment Act 1987 - Ministerial Direction 11 (Strategic Assessment of Amendments) - Ministerial Direction 9 (Metropolitan Strategy) |
| Planning practice notes | - Planning Practice Note 46: Strategic Assessment Guidelines, September 2022 |

2.2 Background

(i) Merri-bek Open Space Strategy

The Open Space Strategy (which replaces the MOSS) includes:

- an open space vision
- spatial analysis of open space need and provision
- objectives for managing open space including Traditional Owner commitment, a network which is accessible, inclusive, adaptive and resilient and provides for social connection, a healthy and active community, biodiversity and canopy tree cover to reduce the heat island effect

- strategic directions that respond to the objectives
- enabling actions including:
 - an open space project list including in areas to address increased demand, and land acquisition to fill in network gaps
 - open space funding including requirements for developer open space monetary and land contributions and how contributions will be used
 - for land use and development, including updating the Merri-bek Planning Scheme (through this Amendment) and using the strategy to inform future strategic work including open space contribution rates and reviewing zone and overlay provisions
- a decision making framework
- directions for action planning, monitoring and review.

An associated Action Plan outlines the short term (2024/25) implementation actions.

The Open Space Technical Report informing the Open Space Strategy:

- reviewed and mapped existing open space, walking catchments and hierarchy function
- analysed current and future worker and resident populations and future open space needs
- reviewed the impacts of future residential densification on open space
- identified an open space gaps framework
- identified specific open space projects to address open space gaps and future needs
- created a 20-year Projects list to guide investment and development of the Merri-bek open space network and address identified gaps.

Council advised the Open Space Technical Report also provides the strategic basis for a revised Public Open Space contribution rate and that it was undertaking additional background work to support a revised rate being introduced into the Merri-bek Planning Scheme.

Council's Part A submission identified the Open Space Strategy was also informed by the former *Planning Practice Note 70: Open Space Strategies*, June 2015 and discussions with the State Government's Open Space team to ensure alignment with the *Open Strategy for Metropolitan Melbourne: Open Space for Everyone*, 2021.

(ii) Moving Around Merri-bek

The Transport Strategy (which replaces the MITS as Council's long-term transport strategy) includes:

- a vision statement and identified values (safe, accessible, sustainable, healthy, liveable and inclusive) and objectives for each value
- an overview of the transport system (pedestrian, cycle, public transport, driving networks and land use) including identification of what Council will do, advocacy actions and success measures for each element
- a 'Streets for People' approach.

A 'Streets for People' framework provides for an approach that combines movement and place functions of a street with Healthy Streets assessments to understand how streets work at the local level and are experienced at the human scale. Council proposes to engage with the community on a 'Streets for People' plan in 2025 to identify a program of streets where the framework will be applied.

The Transport Strategy is supported by an Action Plan which focuses on immediate actions for 2024/25 and outlines potential actions beyond 2025.

The Transport Strategy was informed by the JWS Research Report which included an analysis of:

- how residents currently live, work and move around Merri-bek
- the choices residents make for their mode of transport
- the impact of COVID-19 on travel choices
- future aspirations for transport around Merri-bek
- barriers to regularly using sustainable transport.

(iii) Policy changes

Open Space

The Amendment changes to Clause 02.03-8 include new open space objectives including to improve the open space network by:

- recognising First Nations people
- providing resilient, accessible, safe and diverse open spaces
- providing adaptive, cooling spaces that also enhance and conserve biodiversity
- using open space contributions to purchase and improve open spaces and infrastructure.

The Amendment introduces an amended Open Space Framework Plan in Clause 02.04 (Figure 1).

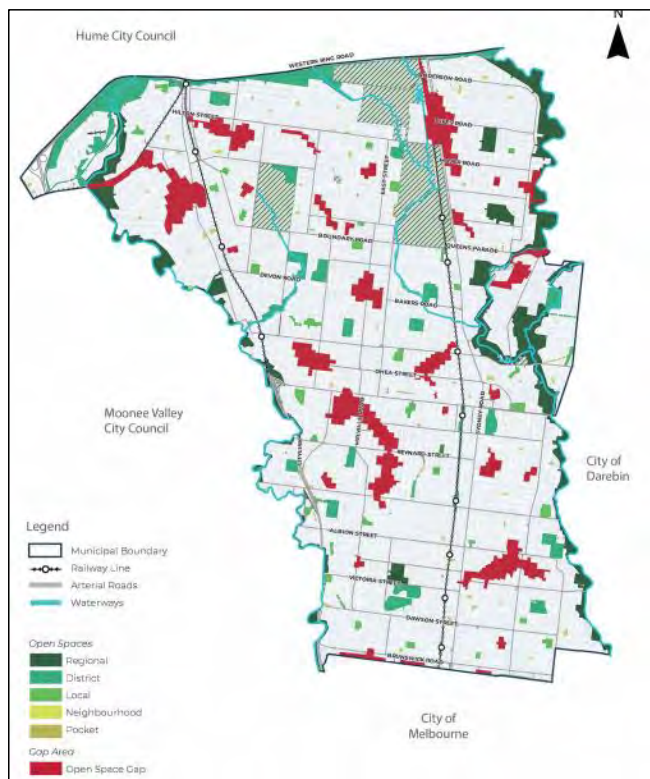
The key changes to the framework plan are:

- identification of open space gap areas (which include some areas previously identified as high, medium and priority gap areas)
- inclusion of an open space hierarchy (regional, district, local, neighbourhood and precinct)
- deletion of references to private or public open space and areas of remnant vegetation.

The exhibited Clause 19.02-6L replaces existing strategies and guidelines with:

- strategies to design development:
 - to preserve and enhance access to open space
 - improve open space interfaces including enabling sunlight access and reducing overshadowing
 - ensure abutting buildings use appropriate materials
 - provide open space land contributions in gap locations, adjoining existing open space, creek corridors and the open space network
- strategies to encourage development to contribute to open space corridors along creek corridors, open space provision on strategic redevelopment sites and high density residential sites that are unlikely to be subdivided
- policy guidance for open space widths along creeks.

Figure 1 Amended Clause 02.04 - Open Space Framework Plan



Transport

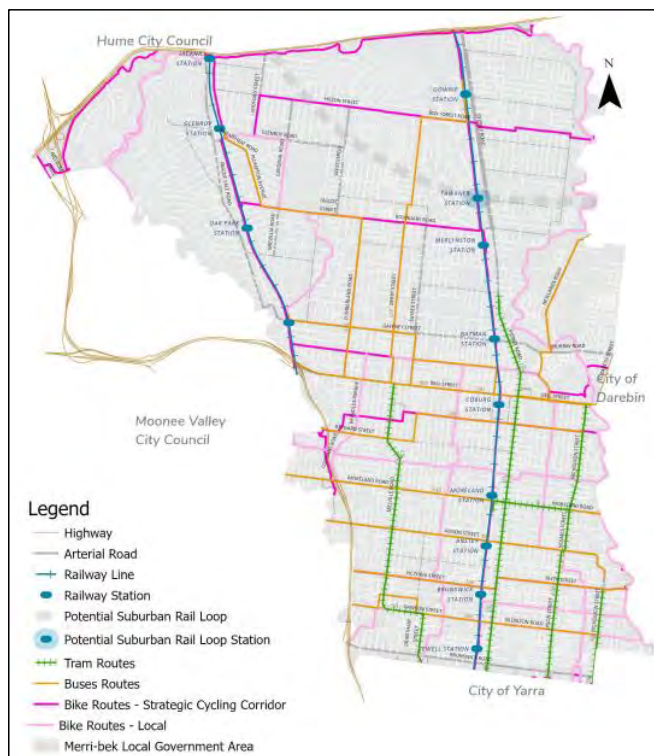
The Amendment changes to Clause 02.03-7 include:

- updated context about the Merri-bek transport system
- objectives for a transport system that is safe, accessible and inclusive and contributes to a healthy, liveable and sustainable community.

The Amendment introduces an updated Transport Framework Plan in Clause 02.04 (Figure 2). The key change is the identification of bike (local and strategic corridor) routes.

The exhibited Clause 18.02-2L deletes an existing strategy to reallocate road space and carparking to support cycling and public transport access which reflected directions in the former MITS.

Figure 2 Amended Clause 02.04 - Transport Framework Plan



2.3 The issues

The issues are whether:

- the Open Space Strategy and Transport Strategy are appropriate documents to introduce into the Merri-bek Planning Scheme
- the Amendment is strategically justified.

2.4 Submissions

Council's Part A submission set out the strategic context for the Amendment, background for the development of both strategies including associated community engagement. It considered the Amendment was strategically justified, consistent with or implemented State and local objectives of the Planning Policy Framework (PPF) and Plan Melbourne and applied relevant planning guidance.

Open Space Strategy

Submission 5 supported the Amendment changes to Clause 19.02 relating to open space.

Submitter 4 had made an earlier submission to the Open Space Strategy identifying that it had not utilised more recent Australian Bureau of Statistics data. To update the strategy now with

additional data as proposed by Council in its Part B submission (discussed below) was not considered to be an orderly approach to planning.

Transport Strategy

Submissions 3 and 4 did not support the Amendment progressing with the current Transport Strategy considering elements of it were ambiguous, unclear and did not provide for certainty. The submissions proposed that the Amendment be deferred or split to enable the Transport Strategy to be further reviewed by the new Council following recent local government elections.

Submission 4 said the Transport Strategy was inconsistent with the *Council Plan 2021-2025*, Moreland City Council (Council Plan) and that the current MITS should remain in place until the Transport Strategy was further reviewed. The identified inconsistencies related to Council Plan strategies to collaborate with the community on pedestrian and cycling infrastructure.

Submission 4 considered that references to the 'Merri-bek Transport System' in both the Transport Strategy and Clause 02.03-7 was inconsistent with the use of the term 'System' in the *Transport Integration Act 2010* and associated land use and transport integration guidance. It was submitted that there was only a 'State level' Transport System and the term 'local movement network' was more appropriate to use at the local level. The submission observed that the Explanatory Report had not addressed the Transport Integration Act as required by *Planning Practice Note 46: Strategic Assessment Guidelines*.

Council's Part A submission identified the Transport Strategy was required to replace the MITS in the context of:

- transport policy changes at the state and local level
- demographic changes within the municipality
- significant residential and commercial development
- new transport technologies
- Council's commitment to mode shift reflected in its *Council Plan 2017-2021*.

Council submitted the Amendment aligned with two themes of the Council Plan:

- Theme 1: An environmentally proactive Moreland, which includes strategies to care for open space and ecosystems, including waterway and provide better access to parks, playgrounds, and facilities.
- Theme 2: Moving and living safely in Moreland, which includes strategies to build better paths, advocate for better access to public transport, encourage more walking, cycling and use of public transport and improve the safety of roads and paths.

Council identified that the Council Plan identified as major initiatives and priorities the reviewing of the MOSS and MITS.

In relation to the use of the term 'Merri-bek Transport System' Council submitted:

- the reference was a holistic one, referring to the movement networks (pedestrian, cycling, public transport and driving) within the municipality and which contribute in turn with the state transport system
- the use of the term was consistent with the Transport Integration Act which defines transport system as meaning "*all the components which make up the system for the movement of persons and goods...*"
- the use of the term is not precluded in any related planning guidance

- its use of the term had not been questioned through the Amendment authorisation process or by DTP in its submission.

Council changes to exhibited Amendment

The Department of Transport and Planning submission supported the Amendment but identified suggested changes to the Transport Framework Plan's designation of specific cycling links and to correct a minor legend error.

Council's Day 1 changes to the exhibited Transport Framework Plan in Clause 02.04 (Document 3 and included in Appendix C) addressed DTP's submission. The changes:

- identify the following local bike routes as part of the Strategic Cycling Corridor:
 - O'Hea Street between Turner and Sussex Streets and between Sydney Road and the rail line
 - portion of the link through De Chene Reserve connecting to Connolly Avenue, Coburg
- replace the word 'buses' with 'bus' in the legend.

Council noted there was a potential bus route mapping error in the Transport Framework Plan but that this required further follow up and would be addressed at the time Council considered the Amendment and Panel Report.

Council's Part B submission proposed further changes to the exhibited Open Space Framework Plan (Document 5b) to refine the extent of the open space gap area identified along the Sydney Rail Line easement to retain only that area located under the existing rail bridge. This error was also identified by Submitter 4. A copy of Council's amended Open Space Framework Plan is included in Appendix C of the Panel's Report.

Council's Part B submission also sought to amend Clauses 19.02-6L and 72.08 to refer to an amended version of the Open Space Technical Report dated November 2024 (Document 5e) which had been updated to:

- include updated population and worker statistics and housing forecasts
- reference updated Council strategic documents including Play Space Guidelines, Nature Play Action Plan, Food System Strategy 2024, Transport Strategy and 2024/25 Action Plan and its Strategic Property Framework 2023
- reflect changes to the open space projects list.

Council advised this version of the Technical Report had not been adopted by Council and was to be considered by Council at the time it considers the Panel's Report but that it was always intended the document remain a 'living document'.

2.5 Discussion

The City of Merri-bek covers approximately 50.9 square kilometres and is one of Melbourne's most populous municipalities, with more than 173,000 residents. Merri-bek's population is diverse, comprising a wide range of cultures, household types, tenures, incomes, skills and occupations. The municipality also has a diversity of land uses, including significant areas of residential, industrial and commercial activity and zoned land.

In the context of Victoria's Housing Statement draft housing target for an additional 72,000 new dwellings in Merri-bek by 2051 it is appropriate that key strategies relating to open space and transport planning are reviewed at regular intervals. This ensures they remain relevant and provide useful guidance to decision making.

Other than concerns expressed about how the Streets for People framework will be applied to future projects determined (discussed in the next sub-chapter), no submissions identified that the broader directions of the Transport Strategy (or Open Space Strategy) or the proposed Municipal Strategic Plan (MPS) changes were flawed or lacked a strategic basis.

While both strategies are proposed to be background documents (rather than incorporated documents which are relied on for decision making) the Panel is satisfied that they have been developed using an appropriate methodology and are sufficiently robust for their intended purpose. The MPS and PPF changes ensure that the most up to date strategies are reflected in the Merri-bek Planning Scheme and provide appropriate high level guidance for the future provision of open space and guidance for enhancements to transport networks integrated with other land use planning strategies and policies.

The Transport Integration Act's purpose "*is to create a new framework for the provision of an integrated and sustainable transport system in Victoria consistent with the vision statement.*" Its definition of 'transport system' is an expansive one comprising:

- physical components (transport networks, paths and ways, access facilities, motor vehicles, control systems)
- management components (including strategic and operations planning)
- labour components
- services components (passengers and freight for example).

While the Transport Integration Act applies the concept of transport system across the state, there appears to be no reason why the term cannot be used at the municipal level. Nor is its use likely to create a policy conflict.

The Panel notes that:

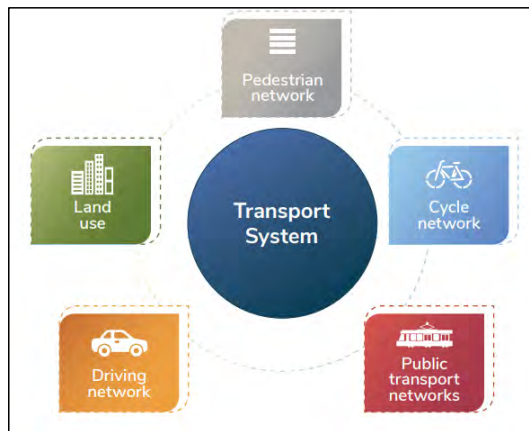
- Clause 02.03-7 already includes references to the creation of "*a transport system that is diverse, progressive and sustainable*" [Panel's emphasis]
- Clause 18. 01-2S includes the generalised reference to 'transport system' including in the objective "*facilitating an integrated and efficient transport system*" and strategies in turn that seek to "*plan and develop a transport system that is integrated across all movement networks*" and to specifically develop a State Transport System [Panel's emphasis]
- the Amendment does not add the words 'transport system' to amended Clause 18.02-2L and it does not appear in any other local policies.

Exhibited Clause 02.03-7 identifies that:

The Merri-bek Transport System is the totality of physical space and infrastructure that allows us to take transport trips. This includes our footpaths, bike lanes, roads, railway lines, and parking. Land uses are also part of our transport system as the way our city is built guides the ways in which we move around.

It is also apparent that the Transport Strategy has had appropriate regard to the *Transport Integration Act* including the Act's transport system components as identified in Figure 3. The Transport Strategy also referred to the Council Plan. While the Council Plan is not a background document in the Merri-bek Planning Scheme or referenced in the MPS it has a role in reviews of the planning scheme. The Panel is satisfied that the Amendment is consistent with the Transport Integration Act and the Council Plan which included explicit actions to review both strategies.

Figure 3 Merri-bek Transport System



Source: Transport Strategy Figure 2

Council changes to exhibited Amendment

Council's proposed changes to the Open Space and Transport Framework Plans are logical and appropriate to reflect current conditions. The Panel notes that Council officers propose to undertake an additional check to ensure bus routes are accurately reflected on the Transport Framework Plan before finalising the Amendment. This is an appropriate step and does not represent a significant change to the Amendment, noting that bus routes change from time to time.

Council should also update both the Open Space Strategy and the Open Space Technical Report to ensure the Open Space Framework Plan match the final Clause 02.04 version.

While the Panel was not provided with a tracked changes version of the Open Space Technical Report it has undertaken a high level compare with the March 2024 version. The changes:

- refer to the Transport Strategy and Strategy Policy Framework in Chapter 3
- update the 2021-2041 population, workforce and dwelling projections (id consulting) to generally lower 2026-2046 forecasts (Quantify Strategic Insights) in Chapter 5
- updates for each suburb, the tables identifying 2026 estimated and 2046 projected resident, worker and dwellings population projected population density
- does not amend overall, or for each suburb, the objectives, strategic directions, open space hierarchy, conclusions and recommendations including relating to open space gaps and projects.

At face value, these changes appear sensible and relevantly reflect the most current statistical data available without changing any of the key findings or recommendations. While the document only serves to provide background information, the Panel is concerned about explicitly supporting the changes to it at this point in the Amendment process. This is particularly so when submitters did not have sufficient opportunity to review the changes and make submissions to the Panel about them and Council did not set out in detail the extent of changes or provide any assessment of them to the Panel. When considering the Panel's Report and the final Amendment, Council should determine whether the changes are consequential and whether any additional notice is required.

2.6 Conclusion and recommendation

For the reasons set out in this report, the Panel concludes that the Amendment is:

- supported by, and implements, the relevant sections of the Planning Policy Framework
- consistent with the relevant Ministerial Directions and Practice Notes
- well founded and strategically justified and should proceed subject to:
 - changes to the Open Space Plan and Transport Framework Plan to correct mapping and legend errors as identified in Appendix C
 - confirming identified bus routes are accurate
 - update the Open Space Strategy and the Open Space Technical Report to ensure the Open Space Framework Plan matches the final Clause 02.04 version.

The Panel recommends:

- 1. Merri-bek Planning Scheme Amendment C231mbek be adopted as exhibited, subject to:**
 - a) **replacing the Clause 02.04 Open Space and Transport Framework Plans with the versions in Appendix C**
 - b) **updating the Transport Framework Plan to correct any inaccurate bus routes**
 - c) **update the Merri-bek Open Space Strategy and the Merri-bek Open Space Technical Report to ensure the Open Space Framework Plan matches the final Clause 02.04 version in Appendix C.**

3 Process issues

3.1 The issues

The issues are whether:

- appropriate notice was given of the Amendment
- whether Council followed appropriate administrative steps in considering submissions to the Open Space and Transport Strategy and the Amendment
- the Charter of Human Rights and Responsibilities Act 2006 was considered when preparing the Amendment and considering submissions
- the community will be engaged in the selection of Streets for People transport projects.

3.2 Submissions

Submitter 4 considered insufficient notice had been given of the Amendment. Online notice had been limited to Council's corporate website page and not placed on its digital engagement platform Conversations Merri-bek. It was submitted that the notice process was reflected in the low number of submissions including the lack of supportive submissions from groups directly consulted. The submission was concerned the lack of public scrutiny meant there was potential for more Amendment mapping errors.

Submission 4 identified further concerns about the Council meeting processes associated with the hearing and consideration of submissions to both strategies and the Amendment. The submission considered the processes potentially conflicted with Council's governance rules or were unfair. It was also submitted that it was not evident that Council had considered its obligations under the *Charter of Human Rights and Responsibilities Act 2006* obligations in its assessment of the two strategies.

Submission 3 was concerned that Council was already progressing transport projects (citing two examples) under the Streets for People framework despite the framework had not yet been consulted on or adopted by Council and the lack of consistency with other engagement strategies. The submission identified the importance of such frameworks for decision making and community engagement and considered Council's current project identification processes lacked transparency and resulted in "*blurred decision making*".

Submitter 4 identified similar concerns, submitting the Streets for People framework could exclude community engagement on transport projects and this was inconsistent with the community engagement and public transparency principles of the *Local Government Act 2006* and the Council Plan.

Council submitted its notice of the Amendment was consistent with its obligations under the PE Act and included:

- notice to relevant state Government departments, prescribed Ministers and abutting Councils
- community members who had previously provided feedback on the draft strategies
- notice in the Age and Herald Sun and Government Gazette
- Social media post
- Council's website.

Council advised the rights identified under the Charter of Human Rights and Responsibilities Act (specifically freedom, dignity, and equity and property rights) had been considered in the preparation of the two strategies and preparation of the Amendment and assessment of submissions. It considered there were no adverse impacts as the Amendment did not deprive any legal or proprietary interest in land, or the ability to use and develop land in accordance with the planning regulatory framework.

Council submitted that the process issues identified in submissions were not relevant to the Amendment.

In relation to the Streets for People framework Council identified:

- the framework was embedded in the exhibited and adopted Transport Strategy (page 46) and sets out how Council will identify streets for streetscape improvements and the associated design process
- community consultation would be undertaken in 2025 on a Streets for People Plan to identify a program of streets to have the framework applied
- further community consultation would be undertaken on the design options for each street project.

Council's Part C written submission (Document 9) provided the following clarification about the Streets for People Framework which the exhibited Transport Strategy identified as a framework *"we will develop..."*. It said:

In reviewing the Transport Strategy, it appears this wording was not updated in the final version of the strategy to state, 'we have developed'. This is in the context of the following text page 7 of the strategy which states: 'In the final section, we introduce a new approach, Streets for People'. This program outlines a holistic approach to street improvements that considers all modes of transport' as well as the language on page 46 of the strategy which sets out the Streets for People framework in detail. to be developed identified:

3.3 Discussion

The Panel is satisfied that Council has met its statutory obligations for giving notice of the Amendment set out under the PE Act. The number of submissions received to an Amendment is not a relevant indicator as to whether notice was sufficient or not. While the Amendment has municipal wide application and will be of interest to the Merri-bek community it is not a particularly complex Amendment, sets high order strategy in place responsive to existing growth pressures and does not change existing controls. Both underpinning strategies have importantly already undergone an extensive community engagement process.

Whether or not Council has followed appropriate processes in terms of its own governance arrangements in adopting the strategies or hearing submissions is not relevant to the planning merits of the Amendment or the Panel's task.

While Council has started to engage with the community on some Streets for People projects this does not impact on the Amendment. The Transport Strategy has a role beyond planning strategy and permit decision making. Its implementation for on the ground streetscape projects or advocacy does not rely on the Amendment being finalised. As identified above the Panel is satisfied that the overall Transport Strategy is a robust piece of strategic work (including the Streets for People framework). The steps Council takes on identifying and progressing future projects is not relevant to the Amendment, however it is apparent that Council proposes further engagement including on a project by project basis.

The Panel has been appointed under the PE Act to consider issues raised in submissions and the merits of those submissions within the framework provided by that Act. The Panel is not aware of any breach of human rights as a result of the Amendment. Submissions did not identify whether there were limitations or restrictions to any identified rights. Rather they focused on whether an assessment had been undertaken beyond the statements in the relevant Council reports that the *Charter of Human and Responsibilities Act 2006* had been considered. While the Panel does not have expertise to make findings relating to this matter, it is unlikely that high level policy changes of the type proposed here represent decisions that could impact on human rights. Indeed the opposite is more likely as the Amendment aims to ensure greater community access to open space and develop an effective movement network across Merri-bek. This will be a positive outcome for the whole community and result in a net community benefit and sustainable development outcomes.

3.4 Conclusion

The Panel concludes that:

- Appropriate notice was given of the Amendment.
- The Amendment will provide a net community benefit and sustainable development outcomes.

Appendix A Document list

| No. | Date | Description | Provided by |
|-----|-----------|-----------------------------------------------------------------------------------------------------------------------------------------------------------------------------------------------------------------------------------------------------------------------------|----------------------------------|
| 1 | 28 Oct 24 | Panel Directions and Hearing Timetable (version 1) | Planning Panels Victoria (PPV) |
| 2 | 29 Oct 24 | Link to Council's YouTube meeting of 11 September 2024 | Merri-bek City Council (Council) |
| 3 | 18 Nov 24 | Council Part A submission | Council |
| 4 | 21 Nov 24 | Updated Distribution list | PPV |
| 5 | 22 Nov 24 | Council Part B submission and Appendix 1 including final versions of: <ul style="list-style-type: none"> a) Explanatory Report b) Clause 19.06-2L c) Clause 02.04 d) Clause 72.08 e) Updated Open Space Technical Report | Council |
| 6 | 22 Nov 24 | Submission | Pauline Carmichael |
| 7 | 22 Nov 24 | Submission | Marion Attwater |
| 8 | 25 Nov 24 | Documents referenced in primary submission | Pauline Carmichael |
| 9 | 26 Nov 24 | Council Part C written submission | Council |

Appendix B Planning context

B:1 Planning policy framework

Council submitted that the Amendment is supported by various clauses in the PPF, which the Panel has summarised below.

Victorian planning objectives

The Amendment will assist in implementing State policy objectives set out in section 4(1) of the PE Act including:

- a) To provide for the fair, orderly, economic and sustainable use, and development of the land.
The Amendment will result in the fair, orderly, economic, and sustainable use, and development of the land by implementing strategies that address the open space and transport needs of the existing and future community of Merri-bek.
- c) To secure a pleasant, efficient, and safe working, living and recreational environment for all Victoria and visitors to Victoria.
The Amendment will contribute to a pleasant, efficient, and safe working, living and recreational environment by implementing high level strategic directions and local policy content that guides how Merri-bek's movement networks and open spaces will be planned, delivered, and managed.
- f) To facilitate development in accordance with the objectives set out in paragraphs (a), (b), (c), (d), and (e).
The Amendment achieves this objective by introducing policy to guide decision making on the use and development of land for the benefit of Merri-bek, consistent with state, and regional planning policy.

Clause 2 (Municipal Planning Strategy)

The Amendment supports the MPS by introducing new strategic directions at Clauses 02.03-7 (Transport) and 02.03-8 (Infrastructure) to help plan, deliver, and manage Merri-bek's transport system and open space network.

The Amendment will help achieve sustainable neighbourhoods around public transport and a network of different types of open spaces for leisure and recreation. The changes do not impact the rest of the MPS but rather support existing strategies for activity centres, environmental and landscape values, built environment and heritage, and economic development.

Clause 18 (Transport)

The Amendment supports Clause 18 by recognising the different components of Merri-bek's transport system and seeking to create an integrated transport system (including cycling) that is safe, accessible, healthy, liveable, sustainable, and inclusive for all users consistent with Clause 18.01-1S (Land use and transport integration), 18.01-2S (Sustainable and safe transport), 18.02-2S (Cycling) and 18.02-2L (Cycling in Merri-bek).

Clause 19 (Infrastructure)

The Amendment supports Clause 19 by:

- setting out how Council will improve, manage, and plan for new and existing parks within its open space network building on the vision and directions in the MPS consistent with Clause 19.02-6S (Open Space)
- updating strategies and guidelines for open space provisions and planning in response to changing demographics and growth pressures on Merri-bek consistent with Clause 19.02-6L (Open space in Merri-bek).

B:2 Other relevant planning strategies and policies**i) Plan Melbourne**

Plan Melbourne 2017-2050 sets out strategic directions to guide Melbourne's development to 2050, to ensure it becomes more sustainable, productive and liveable as its population approaches 8 million. Plan Melbourne is structured around seven Outcomes, which set out the aims of the plan. The Outcomes are supported by Directions and Policies, which outline how the Outcomes will be achieved. The relevant Directions and Policies are set out in Table 3.

Table 3 Relevant parts of Plan Melbourne

| Outcome | Directions | Policies |
|--------------------------------------------------|----------------------------------------------------------------------------------------------------------------------------------------------------------------------|--------------------------------------------------------------------------------------------------------------------------------------------------------------------------------------------------------------------------------------------------------------|
| 3. Melbourne has an integrated transport system | 3.3 Improve local travel options to support 20-minute neighbourhoods | 3.1.6 Support cycling for commuting 3.3.2 Create a network of cycling links for local trips |
| 4. Melbourne is a distinctive and liveable city | 4.1 Create more great public spaces across Melbourne 4.3 Achieve and promote design excellence | 4.1.2 Integrate place-making practices into road-space management 4.1.3 Strengthen Melbourne's network of boulevards |
| 5. Inclusive, vibrant and healthy neighbourhoods | 5.2 Create neighbourhoods that support safe communities and healthy lifestyles 5.4 Deliver local parks and green neighbourhoods in collaboration with communities | 5.4.1 Develop a network of accessible, high-quality, local open spaces |
| 6. Melbourne is a sustainable and resilient city | 6.4 Make Melbourne cooler and greener 6.5 Protect and restore natural habitats | 6.4.1 Support a cooler Melbourne by greening urban areas, buildings, transport corridors and open spaces to create an urban forest 6.5.1 Create a network of green spaces that support biodiversity conservation and opportunities to connect with nature |

Council identified that the Amendment supports the directions and policies of:

- Outcome 3 by introducing policy to create a transport system in Merri-bek that is safe, accessible, healthy, liveable, sustainable, and inclusive. This includes making improvements to the transport system to enable the Merri-bek community to meet their daily needs, improve access to shops, services, and employment, reduce transport emissions, and provide safe and inclusive streets and public places.
- Outcome 4 by introducing policy to ensure the transport system contributes to providing streets and public places which are well-designed, of high-quality, vibrant, and encourages physical activity and socialisation.
- Outcome 5 by implementing the Open Space Strategy policy to improve Merri-bek's open space network. This includes ensuring the open space network caters for the community, supports long-term local living, has a mix of diverse and multi-functional open spaces, and is resilient and safe.
- Outcome 6 by providing for an open space network that is adaptive, cooling, and healthy and which enhances and conserves natural habitats and biodiversity.

ii) **Moreland Integrated Transport Strategy, March 2019**

The MITS provides strategic direction for integrated transport planning in Moreland to 2029, aiming to achieve a reduction in car use. It encourages sustainable transport in the design of new development in activity, neighbourhood and local centres. The MITS is a background document introduced through Moreland Planning Scheme Amendment C183. The Amendment proposes to replace the MITS with the Transport Strategy.

iii) **Moreland Open Space Strategy 2012-2022, 2012**

The MOSS provides cohesive direction for the future provision, planning, design and management of publicly owned open space that is set aside for leisure, recreation and nature conservation purposes. It identifies that a full review of the strategy will be undertaken in 10 years (2022). The MOSS is a background document. The Amendment proposes to delete reference to it and replace it with the Open Space Strategy.

B:3 Ministerial Directions, Planning Practice Notes and guides

The Explanatory Report discusses how the Amendment meets the relevant requirements of Ministerial Direction 11 (Strategic Assessment of Amendments) and *Planning Practice Note 46: Strategic Assessment Guidelines*, August 2018. That discussion is not repeated here.

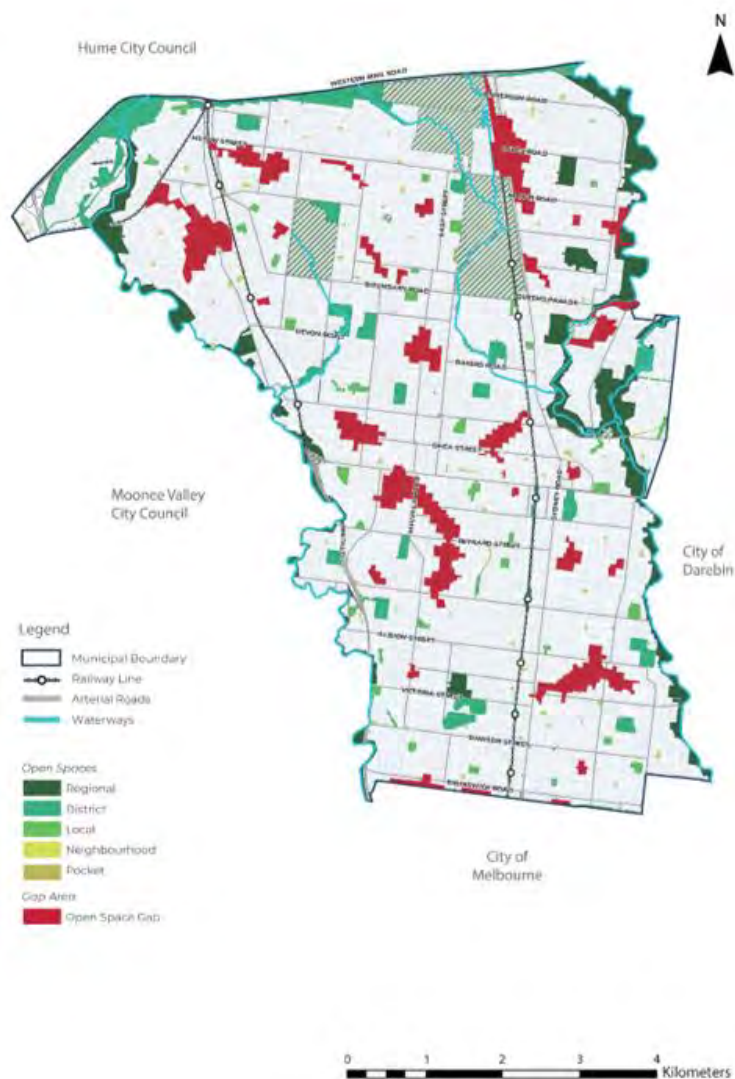
A Practitioner's Guide to Victorian Planning Schemes Version 1.5, April 2022 (Practitioner's Guide) sets out key guidance to assist practitioners when preparing planning scheme provisions. The guidance seeks to ensure:

- the intended outcome is within scope of the objectives and power of the PE Act and has a sound basis in strategic planning policy
- a provision is necessary and proportional to the intended outcome and applies the Victoria Planning Provisions in a proper manner
- a provision is clear, unambiguous and effective in achieving the intended outcome.

Council advised the Amendment was prepared consistent with the Practitioner's Guide.

Appendix C Council's final version of Clause 02.04 Open Space and Transport Framework Plans

Open Space Framework Plan



Transport framework plan





Open Space Strategy 20-year Projects List

Purpose of the Projects List

The Open Space Projects List identifies specific investments in open space that Merri-bek City Council would need to deliver over time to implement the Open Space Strategy.

The purpose of this List is to provide Council with an understanding of the quantum of projects required to be delivered in open space over a long-term timeframe to assist with annual and long-term work planning and financial considerations.

The Projects List is not exhaustive, nor definitive. Council will make other investments in open space and may deliver other capital projects that are identified from time to time that are required and deemed to be consistent with the Open Space Strategy. The Projects List does not include maintenance costings, these will be determined through specific project development and Council's asset management processes.

Timing and delivery of projects is also subject to change and Council's normal budget and work planning processes. Some projects also rely on the proactive purchase of land, to be delivered, which are subject to availability and market forces.

The projects are drawn directly from the analysis undertaken as part of the Open Space Technical Background report and Merri-bek's existing strategies that identify projects in open space (including the Integrated Water Management program, the Sport and Active Recreation Strategy and the Nature Plan).

Abbreviations:

- AAA: All Access Abilities
- AC: Activity Centres.
- GMCT: Greater Metropolitan Cemeteries Trust.
- NE: North-east
- NRM: Natural Resource Management
- RB: Retarding Basin
- SUA: Shared user agreement.
- SUP: Shared user path
- WSUD: Water Sensitive Urban Design

Timeframes:

The timeframes for projects are:

- H: to commence in 0 – 5 years.
- M: To commence within 6 – 15 years.
- L: To commence within 16 – 20 years.

Costs:

The listed project costs are cost estimates only. The costs are based on delivery of similar comparable projects in the last 10 years by Merri-bek City Council. The costs have been qualitatively assessed to account for real-life 2023 costs. Projects will be subject to detailed

feasibility analysis should the process proceed during future budget and work planning processes. Project costs will also be higher in future years due to cost escalation and consumer price index changes.

Cost estimates are broken down for simplicity as:

- \$: \$0 - \$150,000
- \$\$: \$150,000 - \$500,000
- \$\$\$: \$500,000 - \$1,000,000
- \$\$\$\$: \$1,000,000 +

Sizes of open space:

The sizes of pocket, neighbourhood, local, district and regional relate to the Open Space hierarchy within the Open Space Strategy.

Project directions:

The directions refer to the five directions within the Open Space Strategy, being:

- Direction 1: Providing parks close to home and enhancing existing open spaces
- Direction 2: Having a mix of open spaces and open space experiences
- Direction 3: Ensuring our open space network is adaptive, biodiverse, cooling, healthy and resilient.
- Direction 4: Providing open space for everyone
- Direction 5: Improving access to and through our open space network through better links, corridors and collaboration.

20-year Project List

| Project number | Open Space Project Technical report Project Number | Open Space | Project Description | Suburb | Cost Bracket \$ - \$0 - \$150,000 \$\$ - \$150,000 - \$500,000 \$\$\$ - \$500,000 - \$1,000,000 \$\$\$\$ - \$1,000,000 + | Priority of Delivery (L,M,H) | OSS Directions 1, 2, 3, 4 and 5 / Technical Report Objective 1: "Support a baseline service of open space by providing open space within 500m of all residential properties, and within 300m to all properties in activity centres." | OSS Directions 1, 2, 3, 5/ Technical Report Objective 2: "Improve the provision, scope, and quality of open space in Merri-bek through the open space hierarchy and associated catchment." | OSS Directions 3 and 4 / Technical Report Objective 3: "Create open spaces that address gaps for specific open space needs." | OSS Direction 3 / Technical Report Objective 4: "Strengthen creek corridors and biodiversity links to support sustainability and biodiversity across Merri-bek." | OSS Direction 1, 3, and 5 / Technical Report Objective 5: "Identify and complete 'missing links' in linear open space networks." | OSS Direction 1 / Technical Report Objective 6: "Enhance availability of larger open space assets within and beyond Merri-bek including to restricted or private open space." |
|----------------|----------------------------------------------------|---------------------------------------------------|----------------------------------------------------------------------------------------------------------------------------------------------------------------------------------------------------------------------------------------------------------------------------------------------------------------------------------------------------------------------------------------------------------------------------------------------------------------------------------------------------------------------------------------------|----------------|--------------------------------------------------------------------------------------------------------------------------------------------------------|------------------------------|--------------------------------------------------------------------------------------------------------------------------------------------------------------------------------------------------------------------------------------|--------------------------------------------------------------------------------------------------------------------------------------------------------------------------------------------|------------------------------------------------------------------------------------------------------------------------------|------------------------------------------------------------------------------------------------------------------------------------------------------------------|----------------------------------------------------------------------------------------------------------------------------------|-------------------------------------------------------------------------------------------------------------------------------------------------------------------------------|
| 1 | BE01 | New Neighbourhood Park 1 in Brunswick East | Deliver a new neighbourhood space near Temuka Avenue including the installation of a play space and dog exercise function. | Brunswick East | \$\$\$\$ | H | Y | N | N | Y | N | N |
| 2 | BE02 | Inner Circle Reserve | Dog exercise facilities, installation of informal sports and seating between Rathdowne Street and Lygon Street. | Brunswick East | \$\$ | L | N | N | N | Y | N | Y |
| 3 | BE03 | New Pocket Park (Lygon Street AC) | New Pocket Park space to service gap area and increased population in activity centre | Brunswick East | \$\$\$\$ | H | N | N | N | Y | N | Y |
| 4 | BE04 | New Pocket Park (Nicholson Street AC) | New Pocket Park space to service increased population in activity centre | Brunswick East | \$\$\$\$ | H | N | N | N | Y | N | Y |
| 5 | BE05 | Explore upgrades to Brunswick East Primary School | Seek shared user agreement to access western half of school grounds on weekends. Potential joint funding of upgrades to passive recreation area | Brunswick East | \$\$ | L | N | N | N | Y | Y | Y |
| 6 | BE06 | Abrahams Reserve | Abraham Reserve biodiversity focus. upgrade. | Brunswick East | \$ | L | N | N | Y | Y | N | N |
| 7 | BE07 | Kingfisher Gardens | Open space / park upgrade with amenity, landscaping and biodiversity improvements. | Brunswick East | \$\$ | M | N | N | Y | N | N | N |
| 8 | BE08 | Jones Park / Allard Park | Upgrade of playground, and design and construction of stormwater harvesting including improving the quality of the open space by providing additional irrigation for the sports field and providing a publicly accessible raingarden / swale for public enjoyment. Improvements to Allard Park include to reconstruct playing field, drainage irrigation, coaches' boxes, spectator seating, goal protective netting, new goal posts, perimeter fence and sports field lighting (100 LUX LED) and upgrade playground and exercise equipment. | Brunswick East | \$\$\$\$ | H | N | N | Y | Y | N | N |
| 9 | BE09 | Kirkdale Park | Upgrade of existing playground. | Brunswick East | \$\$\$\$ | L | N | N | Y | N | N | N |

| | | | | | | | | | | | | |
|----|------|-----------------------------------------|---------------------------------------------------------------------------------------------------------------------------------------------------------------------------------------------------------------------------------------------------------------------------------------------------------------------------------------------------------|----------------|----------|---|---|---|---|---|---|---|
| 10 | BE10 | Methven Park | Upgrade of existing playground. | Brunswick East | \$\$ | M | N | N | Y | N | N | N |
| 11 | BE11 | Fleming Park | Upgrade of existing playground and stormwater harvesting for irrigation (subject to further design work). | Brunswick East | \$\$\$\$ | M | N | N | Y | Y | N | N |
| 12 | BE12 | Park Street Reserve | Upgrade of existing playground as well as overall open space improvements along this Reserve. These will include path improvements, public toilet, nature adventure play, drinking fountains, landscaping and revegetation, signage (important for both Reserve users as well as pedestrian, runners and cyclists along the nearby Capital City Trail). | Brunswick East | \$\$\$\$ | L | N | N | Y | N | N | N |
| 13 | BE13 | Douglas Reserve | Upgrade of existing playground. | Brunswick East | \$\$ | L | N | N | Y | N | N | N |
| 14 | BE14 | Edna Grove Park ('Joe's Market Garden') | Upgrade to improve landscaping, Merri Creek habitat, seating, stormwater harvesting or wetland to provide irrigation for Joe's market Garden. | Brunswick East | \$\$\$\$ | M | N | N | Y | N | N | N |
| 15 | BE15 | Balfie Park | Upgrade sports grounds, including sports ground surface, drainage, irrigation and potentially lighting. | Brunswick East | \$\$\$\$ | M | N | N | Y | N | N | N |
| 16 | BE16 | Sumner Park | Sumner Park open space / park upgrade, including landscaping, works to sports ground, drainage, and raingardens / stormwater harvesting for irrigation | Brunswick East | \$\$\$\$ | M | N | N | Y | Y | N | N |
| 17 | BR01 | New Local Park 1 in Brunswick | Deliver a new Local Park to service a significant gap area in the east of the municipality. Provide Play Space and off-lead or fenced dog park in this park. | Brunswick | \$\$\$\$ | M | Y | N | N | N | N | Y |
| 18 | BR02 | New Neighbourhood Park 1 in Brunswick | Deliver a new Neighbourhood Space to fill a gap area in the west of the suburb. Provide a play space and potential fenced dog park area | Brunswick | \$\$\$\$ | M | Y | N | N | N | N | Y |
| 19 | BR03 | New Neighbourhood Park 2 in Brunswick | Deliver a new Neighbourhood Space to address a gap area in the south-east of the suburb. Fenced dog park and passive recreation opportunities | Brunswick | \$\$\$\$ | M | Y | N | N | N | N | Y |
| 20 | BR04 | New Pocket Park 1 in Brunswick | New Pocket Park space to service gap area and increased population in AC | Brunswick | \$\$\$\$ | L | Y | N | N | N | N | Y |
| 21 | BR05 | New Pocket Park 2 in Brunswick | New Pocket Park space to service increased population in AC | Brunswick | \$\$\$\$ | L | N | N | N | Y | N | Y |
| 22 | BR06 | New Dedicated dog exercise in Brunswick | Construct dedicated dog park. | Brunswick | \$\$ | M | N | N | Y | N | N | N |
| 23 | BR07 | LXRP dog exercises | Provide fenced dog park in LXRP linear space in the area north of Jewell Station and in the area south of Anstey Station. | Brunswick | \$\$\$ | M | N | N | N | Y | N | N |
| 24 | BR08 | Jewell Station | Upgrade of the open space outside of Jewell Station at the end of Wilson Avenue next to future LXRP area including installation of a playground, community garden, picnic table. | Brunswick | \$\$ | L | N | N | Y | N | Y | N |

| | | | | | | | | | | | | |
|----|------------|---------------------------------------------|-----------------------------------------------------------------------------------------------------------------------------------------------------------------------------------------------------------------------------------------------------------------------------------------|----------------|----------|---|---|---|---|---|---|---|
| 25 | BR09 | Brunswick Parklands | Upgrade the shared user path within the Brunswick Parklands connecting A G Gillon, Brunswick Park, Clifton Park and Gilpin Park. | Brunswick | \$\$\$ | M | N | N | Y | N | Y | N |
| 26 | BR10 | Temple Park | Upgrade and enhance existing playground. | Brunswick | \$\$\$\$ | M | N | N | Y | N | N | N |
| 27 | BR11 | Craig & Seeley Park | Upgrade and enhancement of existing park including upgrade and enhancement of playground, installation of nature play, drinking fountain and seating. | Brunswick | \$ | M | N | N | Y | N | N | N |
| 28 | BR12 | Randazzo Park | Upgrade and enhancement of existing playground. | Brunswick | \$ | M | N | N | Y | N | N | N |
| 28 | BR13 | A G Gillon Reserve | A G Gillon Oval playing field upgrade, playground upgrade and oval stormwater harvesting including improvements to the quality of the open space by providing additional irrigation for the sports field and providing a publicly accessible raingarden and swale for public enjoyment. | Brunswick | \$\$\$\$ | H | Y | Y | Y | Y | N | Y |
| 30 | BR14 | Pooley Reserve | Upgrade and enhancement of existing playground | Brunswick | \$ | L | N | N | Y | N | N | N |
| 31 | BR15 | Gillbrook Reserve | Upgrade and enhancement of existing playground. | Brunswick | \$\$\$\$ | L | N | N | Y | N | N | N |
| 32 | BR16 | Barkly Street Park | Upgrade and enhancement of existing playground. | Brunswick | \$\$\$\$ | L | N | N | Y | N | N | N |
| 33 | BR17 | Wilson Avenue Parklet | Upgrade and enhancement of existing park | Brunswick | \$ | L | N | N | Y | N | N | N |
| 34 | BR18 | Warr Park | Upgrade and enhancement of existing playground | Brunswick | \$\$\$\$ | L | N | N | Y | N | N | N |
| 35 | BR19 | Loretto John York Park | Upgrade and enhancement of existing playground. | Brunswick | \$ | L | N | N | Y | N | N | N |
| 36 | BR20 | Saxon Street Gardens | Upgrade and enhancement of existing playground and park | Brunswick | \$ | L | N | N | Y | N | N | N |
| 37 | BR21 | Clifton Park | Upgrade and enhancements of existing playground and skate park and upgrading playing field of middle and west Clifton Park including leveling and turf renewal, new drainage and irrigation system to support the sport field and sport field lighting. | Brunswick | \$\$\$\$ | M | N | N | Y | N | N | N |
| 38 | BR22 | Gilpin Park | Design and construction of WSUD stormwater treatment and harvesting system and wetland to improve the quality of the open space by providing additional irrigation for the open space and providing a publicly accessible raingarden / swale for public enjoyment. | Brunswick | \$\$\$\$ | M | N | N | Y | Y | N | N |
| 39 | BR23 | Symons Park | Symons Park playground and park upgrade | Brunswick | \$ | H | N | N | Y | N | N | N |
| 40 | BR24 | Reaburn Reserve | Upgrade and enhancement of existing playground and park. | Brunswick | \$\$\$\$ | M | N | N | Y | N | N | N |
| 41 | BR25 (NEW) | Loyola Pitt road closure for new open space | Close additional part of the Pitt Street Road space to create a new open space at the Loyola and Pitt Streets intersection | Brunswick | \$\$\$\$ | M | Y | Y | Y | Y | N | Y |
| 42 | BW01 | Coral Street playground | Upgrade of existing playground including new signage. | Brunswick West | \$\$\$\$ | M | N | N | Y | N | N | N |

| | | | | | | | | | | | | |
|----|------------|--------------------------------------------|---------------------------------------------------------------------------------------------------------------------------------------------------------------------------------------------------------------------------------------------------------------------------------------------------------------------------------------|----------------|----------|---|---|---|---|---|---|---|
| 43 | BW02 | New Neighbourhood Park 1 in Brunswick West | Provision of new open space with multiple functions to support increasing population in and around activity centre. | Brunswick West | \$\$\$\$ | M | Y | N | N | Y | N | Y |
| 44 | BW03 | Denzil Don Reserve | Upgrade of existing playground and improve gateways to Victoria Street through fencing and connection to Wilson Street underpass. | Brunswick West | \$\$\$\$ | M | N | N | Y | N | Y | Y |
| 45 | BW04 | Brady Reserve | Improve the amenity and quality of public open space by creating new publicly accessible habitat, walking tracks, access to nature and biodiversity. This includes improvements to southern gateway from Victoria Street and Wilson Street underpass condition, signage and construct wetland and stormwater treatment. | Brunswick West | \$\$\$\$ | M | N | N | N | Y | Y | N |
| 46 | BW05 | New Pocket Space in Brunswick West | New Pocket Space in Brunswick West | Brunswick West | \$\$\$\$ | M | Y | N | N | N | N | Y |
| 47 | BW06 | New Neighbourhood Park 2 in Brunswick West | Deliver a new Neighbourhood Space to the south-western gap area in the suburb. This open space will provide a play space and other functions to augment the limited open space utility of the Moonee Ponds Creek Linear Reserve in this location. | Brunswick West | \$\$\$\$ | M | Y | N | N | Y | N | Y |
| 48 | BW07 | Holbrook Reserve | Holbrook Reserve open space / park upgrade with amenity, landscaping and biodiversity improvements, and playing field upgrades (such as drainage). | Brunswick West | \$\$\$\$ | M | N | N | N | Y | Y | N |
| 49 | BW08 | Melville Creek Linear | Upgrade of existing playground. | Brunswick West | \$\$\$\$ | M | N | N | Y | N | N | N |
| 50 | BW09 | Fraser Reserve | Upgrade of existing playground. | Brunswick West | \$\$\$\$ | L | N | N | Y | N | N | N |
| 51 | BW10 | Jacobs Reserve | Upgrade of existing playground. | Brunswick West | \$\$\$\$ | L | N | N | Y | N | N | N |
| 52 | BW11 | Hudson Reserve | Upgrade of existing playground. | Brunswick West | \$ | L | N | N | Y | N | N | N |
| 53 | BW12 | John Street Linear Reserve | Upgrade of existing playground. | Brunswick West | \$ | L | N | N | Y | N | N | N |
| 53 | BW13 | Wylie Reserve | Design and construction of stormwater treatment and harvesting system to improve the quality of the open space by providing additional irrigation for the sports field and providing a publicly accessible raingarden / swale for public enjoyment. | Brunswick West | \$\$\$\$ | M | N | N | N | Y | N | N |
| 55 | BW14 | Dunstan Reserve | Improving the quality of the open space by providing additional irrigation for the sports field and providing a publicly accessible raingarden / swale for public enjoyment, installation of new coaches' boxes, spectator seating, goal protective netting, new goal posts, perimeter fence and sports field lighting (100 LUX LED). | Brunswick West | \$\$\$\$ | M | N | N | Y | Y | N | N |
| 56 | BW15 (NEW) | Hopetoun Avenue road | Close part of Hopetoun Avenue to create additional open space | Brunswick West | \$ | M | Y | Y | Y | N | N | N |

| | | closure and open space creation | | | | | | | | | | |
|----|------------|---------------------------------------------------------------------------------------------------------|------------------------------------------------------------------------------------------------------------------------------------------------------------------------------------------------------------------------------------------------------------------|----------------|----------|---|---|---|---|---|---|---|
| 57 | BW16 (NEW) | Moonee Ponds Creek Corridor land acquisition (1 of 5) - Owen Street, Brunswick West | Land acquisition of property at Owen Street, Brunswick West | Brunswick West | \$\$\$\$ | H | N | Y | N | Y | Y | Y |
| 58 | BW17 (NEW) | Moonee Ponds Creek Corridor land acquisition (2 of 5) - MW land rear of Turnbull Court, Brunswick West. | Land acquisition at MW land rear of Turnbull Court, Brunswick West. | Brunswick West | \$\$\$\$ | H | N | Y | N | Y | Y | Y |
| 59 | BW18 (NEW) | Moonee Ponds Creek Corridor land acquisition (3 of 5) - Galtes Crescent, Brunswick West. | Land acquisition of property at Galtes Crescent, Brunswick West. | Brunswick West | \$\$\$\$ | H | N | Y | N | Y | Y | Y |
| 60 | BW19 (NEW) | Moonee Ponds Creek Corridor land acquisition (4 of 5) - part of Moreland Road, Brunswick West | Land acquisition of property at Moreland Road, Brunswick West (partial acquisition) | Brunswick West | \$\$\$\$ | H | N | Y | N | Y | Y | Y |
| 61 | CB01 | New Neighbourhood Park 1 in Coburg | Deliver a new Neighbourhood Space to address part of the western gap area. This open space will be multi-functional and provide a play space integration of an off-lead area to address specific function gap. | Coburg | \$\$\$\$ | H | Y | Y | N | Y | N | N |
| 62 | CB02 | New Neighbourhood Park 2 in Coburg | Deliver a new Neighbourhood Space to address NW gap area. This open space will be multi-functional and provide a play space. It should also consider integration of dog park / off-lead areas if Harmony Park is not upgraded to support off-lead dog activities | Coburg | \$\$\$\$ | M | Y | N | N | N | N | N |
| 63 | CB03 | New Neighbourhood Park 3 in Coburg | Deliver a new Neighbourhood Space to address part of SW gap area. This open space will be multi-functional and provide a play space. | Coburg | \$\$\$\$ | L | Y | N | N | N | N | N |
| 64 | CB04 | New Local Park 1 in Coburg | Deliver a new Local Space to address part of the western gap area. This open space will be multi-functional and provide a play space. It should also consider integration of dog park / off-lead areas to address specific function gap. | Coburg | \$\$\$\$ | M | Y | N | N | N | N | N |
| 65 | CB05 | New Local Park 2 in Coburg | Deliver a new Local Space to address the eastern gap area. This open space will be multi-functional and provide a play | Coburg | \$\$\$\$ | L | Y | N | N | N | N | N |

| | | | | | | | | | | | | |
|----|------|-----------------------------|-------------------------------------------------------------------------------------------------------------------------------------------------------------------------------------------------------------------------------------------------------------------------------------------------------------------------------------------------------------------------------------------------------------|--------|----------|---|---|---|---|---|---|---|
| | | | space. It should also consider integration of dog park / off-lead areas to address specific function gap. | | | | | | | | | |
| 66 | CB06 | New Pocket Park 1 in Coburg | New Pocket Park space to service gap area and increased population in adjacent AC. Provide opportunities for passive recreation and play | Coburg | \$\$\$\$ | M | Y | N | N | N | N | Y |
| 67 | CB07 | New Pocket Park 2 in Coburg | New Pocket Park space to service gap area and increased population in AC. Provide opportunities for passive recreation suitable to high utilisation | Coburg | \$\$\$\$ | M | Y | N | N | N | N | Y |
| 68 | CB08 | Robinson Reserve | Provide an off-lead dog area within Robinson Reserve to address gap area | Coburg | \$\$ | S | N | N | N | Y | N | Y |
| 69 | CB09 | Harmony Park | Upgrade existing skate park, and the design and construction of WSUD stormwater treatment system to improve the quality of the open space by providing additional irrigation for the public open space and providing a publicly accessible raingarden / swale for public enjoyment. | Coburg | \$\$\$\$ | M | N | N | Y | Y | N | N |
| 70 | CB10 | Bell Street Reserve | Expand functions to support increasing population in activity centre including improved seating, tables and places to linger for passive recreation opportunities. | Coburg | \$ | M | N | N | N | N | N | Y |
| 71 | CB11 | Bridges Reserve | Expand functions to support increasing population in the activity centre. Improved seating, tables and places to linger for passive recreation opportunities. Inclusion of a dementia friendly / age friendly outdoor toilets in close proximity to senior's exercise park. Installation of shade sail, outdoor seating for older people, sensory garden, and upgraded path to access City Oval facilities. | Coburg | \$\$\$\$ | M | N | Y | Y | N | N | N |
| 72 | CB12 | Central Coburg Town Square | Create new open space town square in central Coburg as part of the Coburg Square redevelopment. | Coburg | \$\$\$\$ | H | N | N | Y | N | N | N |
| 73 | CB13 | Soudan Street | Soudan Street playground and park upgrade | Coburg | \$\$ | H | N | N | Y | N | N | N |
| 74 | CB14 | Calder Reserve | Upgrade and enhancement of existing playground. | Coburg | \$\$ | H | N | N | Y | N | N | N |
| 75 | CB15 | Beau Monde Reserve | Installation of path, seating and signage in line with the Resting Places Strategy. Installation of two culverts to address drainage issues with revegetation of steep slopes and buffer vegetation to improve functionality of open space. | Coburg | \$ | H | N | N | Y | Y | Y | Y |
| 76 | CB16 | Tate Reserve | Upgrades and enhancement of open space including revegetation, path improvements, drinking fountain, wayfinding, shelter, nature play, formal entry dog beach, land acquisition and design and construction of wetland (stormwater treatment) to improve the quality of public open space by creating new publicly accessible habitat, walking tracks, access to nature and biodiversity. | Coburg | \$\$\$\$ | H | N | N | Y | Y | Y | N |
| 77 | CB17 | Budds Street Playground | Upgrade and enhancement of existing playground. | Coburg | \$\$ | M | N | N | Y | N | N | N |
| 78 | CB18 | McKay Street Reserve | Upgrade and enhancement of existing playground. | Coburg | \$\$ | M | N | N | Y | N | N | N |
| 79 | CB19 | Brosnan Park | Upgrade and enhancement of existing playground. | Coburg | \$\$ | M | N | N | Y | N | N | N |

| | | | | | | | | | | | | |
|----|------|------------------------------------|----------------------------------------------------------------------------------------------------------------------------------------------------------------------------------------------------------------------------------------------------------------------------------------------------------------------------------------------------------------------------------------------------|--------|----------|---|---|---|---|---|---|---|
| 80 | CB20 | Hutchison Place | Upgrade and enhancement of existing playground. | Coburg | \$\$ | L | N | N | Y | N | N | N |
| 81 | CB21 | Duggan Reserve | Upgrade and enhancement of existing playground. | Coburg | \$\$ | L | N | N | Y | N | N | N |
| 82 | CB22 | Egan Reserve | Improvements including upgrade with dog beach facilities to protect the creek, enhancement of NRM and stormwater bioretention to improve the quality of public open space by creating new publicly accessible habitat, walking tracks, access to nature and biodiversity. | Coburg | \$\$\$\$ | L | N | N | Y | Y | N | N |
| 83 | CB23 | McDonald Reserve | Upgrade and enhancement of existing playground and playing field including levelling, turf renewal and new drainage. | Coburg | \$\$\$\$ | M | N | N | Y | N | N | N |
| 84 | CB24 | De Chene Reserve | land acquisitions and upgrade of sports field lighting, playground renewal, installation of an exercise station and stormwater harvesting including improving the quality of the open space by providing additional irrigation for the sports field and providing a publicly accessible raingarden / swale for public enjoyment. | Coburg | \$\$\$\$ | M | N | N | Y | N | N | N |
| 85 | CB25 | Bush Reserve | Upgrade and enhancement of existing playground. | Coburg | \$\$\$\$ | L | N | N | Y | N | N | N |
| 86 | CB26 | Gilmour Park | Upgrade and enhancement of existing playground. | Coburg | \$\$\$\$ | L | N | N | Y | N | N | N |
| 87 | CB27 | Connolly Avenue | Upgrade and enhancement of existing park. | Coburg | \$ | L | N | N | Y | N | N | N |
| 88 | CB28 | Campbell Reserve | Upgrade and enhancement of playground, design and construction of stormwater treatment and harvesting system improving the quality of the open space by providing additional irrigation for the sports field and providing a publicly accessible raingarden / swale for public enjoyment. | Coburg | \$\$\$\$ | L | N | N | Y | Y | N | N |
| 89 | CB29 | Anderson Reserve | Upgrade and enhancement of existing playground. Design and construction of stormwater treatment and harvesting and infiltration system. | Coburg | \$\$ | L | N | N | Y | Y | N | N |
| 90 | CB30 | Mailer Reserve | Upgrade and enhancement of existing playground. | Coburg | \$\$ | L | N | N | Y | N | N | N |
| 91 | CB31 | Palazzolo Park | Upgrade and enhancement of existing playground | Coburg | \$\$ | L | N | N | Y | N | N | N |
| 92 | CB32 | Bowden Reserve | Merri Creek Linear Reserve land acquisition to improve linear link and reconstruct SUP and access paths in Bowden Reserve (under Bell Street). | Coburg | \$\$\$\$ | M | N | N | N | Y | Y | N |
| 93 | CB33 | Victoria Mall, Coburg | Upgrade the Victoria Mall civic open space | Coburg | \$\$\$\$ | M | N | N | Y | N | N | N |
| 94 | CB34 | City Oval | Revitalise Coburg City Oval Harding St parkland with a new playground within adequate distance from senior exercise park including a gathering space, revitalised bowls club, new paths, IWM, accessible toilets, and heritage works. Reconstruct playing field, with drainage and irrigation, coaches' boxes, goal protective netting, new goal posts, perimeter fence and sports field lighting. | Coburg | \$\$\$\$ | H | N | N | Y | N | N | N |
| 95 | CB35 | East Coburg and Coburg Tennis Club | Improvements to tennis courts at Coburg Tennis Club including turf renewal and rectify tennis courts subsidence at East Coburg Tennis Club. | Coburg | \$\$\$ | M | N | N | Y | N | N | N |

| | | | | | | | | | | | | |
|-----|------------|--------------------------------------|---------------------------------------------------------------------------------------------------------------------------------------------------------------------------------------------------------------------------------------------------------------------------------------------------------------------------|--------------|----------|---|---|---|---|---|---|---|
| 96 | CN01 | Coburg Lake | Upgrade and enhancement of De Chene Reserve Playground including Doug Hill playground and upgrade and enhancement of Coburg Lake with NRM focus. | Coburg North | \$\$\$\$ | H | N | N | Y | Y | N | Y |
| 97 | CN02 | New Dedicated dog exercise in Coburg | Construct dedicated dog park. | Coburg North | \$\$ | M | N | N | Y | N | N | N |
| 98 | CN03 | Merlynston Tennis Club | Renew en-tout-cas courts at Merlynston Tennis Club. | Coburg North | \$\$ | M | N | N | Y | N | N | N |
| 99 | CN04 | Charles Street | Improve accessibility to Richards Reserve along Charles Street east to the rail line and through to Coburg Lake Reserve. | Coburg North | \$ | M | N | N | Y | N | Y | N |
| 100 | CN05 | Camera Walk Linear Park | Improvements to the open space including upgrades to exercise equipment and addition of a play space to address gap. | Coburg North | \$\$ | M | N | N | N | Y | N | Y |
| 101 | CN06 | Cash Reserve | Function upgrades, including design and construction of wetland improving the quality of the open space by providing additional irrigation for the sports field and providing a publicly accessible raingarden / swale for public enjoyment and addition of playground with an upgrade and enhanced focus on nature play. | Coburg North | \$\$\$\$ | M | N | N | Y | Y | N | N |
| 102 | CN07 | Edgars Creek | Improvements to Edgars creek corridor and reserve, including upgrade to existing NRM, re-naturalisation of concrete section of the creek, design and delivery of pedestrian linkages and land acquisition. | Coburg North | \$\$\$\$ | M | N | N | Y | Y | Y | N |
| 103 | CN08 | Parker Reserve | Land ownership resolution, upgrade pavilion, public toilets, playground, car park, path improvements, restore Dairy Drive wetland, install a renewed multi-purpose field and sports field lighting (min 100 lux) | Coburg North | \$\$\$\$ | H | N | N | Y | Y | N | N |
| 104 | CN09 | Cox Reserve | Create a Community Garden at Cox Reserve and Newlands Community House. | Coburg North | \$ | M | N | N | Y | N | N | N |
| 105 | CN10 | Jackson Reserve | Playground upgrade and design and construction of wetland for stormwater treatment to improve the quality of public open space by creating new publicly accessible habitat, walking tracks, access to nature and biodiversity. | Coburg North | \$\$\$\$ | M | N | N | Y | Y | N | N |
| 106 | CN11 | Edgars-Kodak | New Local Park including a 'local' playground and park renewal, shelter, taps, BBQ, etc (more facilities than a 'small local' with largely just a playground). | Coburg North | \$\$\$\$ | H | N | N | Y | Y | N | Y |
| 107 | CN12 | Sanger Reserve | Upgrade and enhancement of existing playground and upgrade exercise equipment. | Coburg North | \$\$\$\$ | L | N | N | Y | N | N | N |
| 108 | CN13 | Hosken Reserve | Upgrade and enhancement of existing playground. | Coburg North | \$\$\$\$ | L | N | N | Y | N | N | N |
| 109 | CN14 | Merlynston Linear | Upgrade and enhancement of existing playground. | Coburg North | \$\$ | L | N | N | Y | N | N | N |
| 110 | CN15 | Bain Reserve | Land acquisition from VicTrack to retain Bain Reserve parkland. | Coburg North | \$\$\$\$ | H | Y | Y | N | N | Y | Y |
| 111 | CN16 (NEW) | Coburg North Masterplan | Open space improvements achieved through the Coburg North Masterplan | Coburg North | \$\$\$\$ | M | N | Y | Y | Y | N | Y |

| | | | | | | | | | | | | |
|-----|------|-------------------------------------|----------------------------------------------------------------------------------------------------------------------------------------------------------------------------------------------------------------------------------------------------------------------------------------------------------------------------------------|--------------|----------|---|---|---|---|---|---|---|
| 112 | CN17 | Richards Reserve | Upgrade playing field including levelling and turf renewal, new drainage, new irrigation system. | Coburg North | \$\$\$\$ | M | N | N | Y | N | N | N |
| 113 | FW01 | New Neighbourhood Park 1 in Fawkner | Deliver a new Neighbourhood Open Space close to the western end of Jukes Road. Must include a play space and passive recreation function, and fenced dog exercise to support gap and higher density living close to activity centre. | Fawkner | \$\$\$\$ | H | Y | Y | Y | N | N | N |
| 114 | FW02 | New Neighbourhood Park 2 in Fawkner | Deliver a new Neighbourhood Open Space near Sydney Road and Lorne Street including passive recreation function and one additional function. | Fawkner | \$\$\$\$ | H | Y | Y | Y | N | N | N |
| 115 | FW03 | Lorne Street Reserve | Upgrade the open space to improve quality and functions, including land acquisition in line with Lorne Street Reserve concept plan, and including an off-lead area to address dog park gap. | Fawkner | \$\$\$\$ | H | N | N | Y | N | N | N |
| 116 | FW04 | Hare Street Reserve | Lookout and path clean up and capped mound support bush Kinder, nature play and interpretative signage. | Fawkner | \$ | H | N | N | Y | N | Y | N |
| 117 | FW05 | Bababi Djinanang | Upgrade the open space to improve quality and functions as per Babahi Djinanang Masterplan and inclusion of a play space. | Fawkner | \$\$\$\$ | H | N | N | Y | Y | N | N |
| 118 | FW06 | Summerbank Reserve | Upgrade and enhancement of existing playground. | Fawkner | \$ | M | N | N | Y | N | N | N |
| 119 | FW07 | Jack Mutton Reserve | Upgrade and enhancement of existing playground. | Fawkner | \$ | L | N | N | Y | N | N | N |
| 120 | FW08 | Hood-McBryde Reserve | Hood-McBryde Reserve Improvements, as outlines in the Fawkner Parklands Improvement Plan including resolve connectivity issues through path and maintenance works, nature play, maintenance, investigations relating to soil contamination risks, enclosed dog park, alternative flood path, resting place, dementia sensory planting. | Fawkner | \$\$\$ | M | N | N | Y | Y | Y | Y |
| 121 | FW09 | Jukes Road | Various improvements including create a new dog park, upgrade and enhance NRM, undertake feasibility, investigate new creek crossing, construct storm water culvert, implement Leonard Street grasslands. | Fawkner | \$ | M | N | N | Y | Y | N | N |
| 122 | FW10 | Hogan Street Park | Upgrade and enhancement of existing playground. | Fawkner | \$ | L | N | N | Y | N | N | N |
| 123 | FW11 | C B Smith Reserve | Various improvements including installation of an exercise station, upgrade of skate park, upgrade of playground, and design and construction of stormwater treatment raingarden and harvesting providing additional irrigation for the sports field and providing a publicly accessible raingarden / swale for public enjoyment | Fawkner | \$\$\$\$ | M | N | N | Y | Y | N | N |
| 124 | FW12 | Eva Court Playground | Upgrade and enhancement of existing playground. | Fawkner | \$ | M | N | N | Y | N | N | N |
| 125 | FW13 | Jeanine Crescent | Upgrade and enhancement of existing playground. | Fawkner | \$ | M | N | N | Y | N | N | N |
| 126 | FW14 | Queens Parade Reserve | Upgrade and enhancement of existing playground | Fawkner | \$ | M | N | N | Y | N | N | N |

| | | | | | | | | | | | | |
|-----|------------|------------------------------------------------|---------------------------------------------------------------------------------------------------------------------------------------------------------------------------------------------------------------------------------------------------------------------------------------|----------------|-----------------|----------|----------|----------|----------|----------|----------|----------|
| 127 | FW15 | Edward Street Reserve | Upgrade and enhancement of existing playground. | Fawkner | \$\$ | L | N | N | Y | N | N | N |
| 128 | FW16 | Moomba Park | Moomba Park upgrade of playing fields and expansion of park, including investigation of new recreation opportunities, upgrade to side social pavilion to community meeting space and accessible public toilet, creation of maintenance and access fire track and playground upgrades. | Fawkner | \$\$\$\$ | H | N | N | Y | Y | N | Y |
| 129 | FW17 | Charles Mutton Reserve | Upgrade East and West playing field including levelling and turf renewal, new drainage and sports field lighting. | Fawkner | \$\$\$\$ | M | N | N | Y | N | N | N |
| 130 | FW18 | Fawkner Tennis Club | Renew en-tout-cas courts at Fawkner Tennis Club. | Fawkner | \$\$\$ | M | N | N | Y | N | N | N |
| 131 | FW19 | Fawkner Cemetery | Hume, Merri-bek, Melbourne Water and GMCT partnership project to activate the CSL RB with new path connections, nature circuit, resting places, exercise stations and wayfinding in line with the Open Space Strategy, Healthy Waterways Strategy and Jack Roper Plan. | Fawkner | \$\$ | H | N | N | Y | N | N | Y |
| 132 | FW20 (NEW) | Lorne Street Reserve - land acquisition | Acquire land owned by VicRoads along McBryde Street, Fawkner that forms part of the Lorne Street Reserve. | Fawkner | \$\$\$\$ | H | N | N | Y | N | N | N |
| 133 | GR01 | New Local Park 1 in Glenroy | To service people in and around Activity Centre and fill gap area in southwest of the suburb, create a new park to include play space and multiple functions for passive recreation | Glenroy | \$\$\$\$ | H | Y | Y | N | N | N | N |
| 134 | GR02 | Bridget Shortell Reserve | Upgrade of exercise equipment and provide additional seating, shelter and amenities while maintaining open space for use as flexible lawn for events and recreation. | Glenroy | \$\$ | L | N | N | Y | N | N | N |
| 135 | GR03 | G E Clarke Reserve | Upgrade existing playground, including new pedestrian path through the park and relocation of the playground possibly towards the street. | Glenroy | \$\$\$ | L | N | N | Y | N | Y | N |
| 136 | GR04 | Captain Chris Slattery Reserve | Upgrade of existing playground. | Glenroy | \$\$\$\$ | M | N | N | Y | N | N | N |
| 137 | GR05 | Ballerrt Mooroop | Creation of open space infrastructure to support First Nations use of this open space through development of a shared path link between Hilton Street and ATC Cook Reserve that respects the ongoing indigenous significance of the site. | Glenroy | \$\$\$ | H | N | N | Y | N | Y | N |
| 138 | GR06 | New Neighbourhood Park 1 in Glenroy | Create a Neighbourhood Park to service the Gap area to the NE of the Glenroy AC. Should include opportunities for play. | Glenroy | \$\$\$\$ | H | Y | Y | N | N | N | N |
| 139 | GR07 | New Pocket Park 1 in Glenroy | Create a Pocket Space to serve the eastern gap area near Hadfield. Should provide opportunities for Play and passive recreation | Glenroy | \$\$\$\$ | H | Y | Y | N | N | N | N |
| 140 | GR08 | Box Forest Retarding Basin | Joint project with Melbourne Water to improve public open space access to part or all the Box Forest Retarding Basin land to deliver a Neighbourhood Park in close proximity to Gowrie Station. | Glenroy | \$\$\$ | H | N | N | N | Y | Y | Y |

| | | | | | | | | | | | | |
|-----|------|---------------------------------------------------------|-----------------------------------------------------------------------------------------------------------------------------------------------------------------------------------------------------------------------------------------------------------------------------------------|---------|----------|---|---|---|---|---|---|---|
| 141 | GR09 | ATC Cook Reserve | upgrade existing playground and sports grounds, including surface, drainage and potentially lighting. | Glenroy | \$\$\$\$ | H | N | N | Y | N | N | N |
| 142 | GR10 | Wallace Reserve | Upgrade Wallace Reserve, including sports grounds surface, drainage, irrigation and potentially lighting. | Glenroy | \$\$\$\$ | M | N | N | Y | N | N | N |
| 143 | GR11 | Reserve Court / Captain Chris Slattery (BME) Playground | Upgrade of existing playground. | Glenroy | \$ | L | N | N | Y | N | N | N |
| 144 | GR12 | Jacana Wetlands | Jacana Wetlands open space upgrade, including nature play areas. | Glenroy | \$ | M | N | N | Y | N | N | N |
| 145 | GR13 | Upper Moonee Ponds Creek corridor (KSU to Jacana) | Develop conservation management plan in line with Nature Plan for both sides of the creek and implementation to undertake habitat corridor planting amenity improvements as well including seating, drinking fountains, path upgrades (10m link at Fran Street) and wayfinding signage. | Glenroy | \$ | M | N | N | Y | N | Y | N |
| 146 | GR14 | Bill Allen Reserve | Upgrade of existing playground. | Glenroy | \$ | M | N | N | Y | N | N | N |
| 147 | GR15 | Everard Street | Upgrade of existing playground. | Glenroy | \$\$\$\$ | M | N | N | Y | N | N | N |
| 148 | GR16 | McClean Park | Upgrade of existing playground. | Glenroy | \$\$\$\$ | L | N | N | Y | N | N | N |
| 149 | GR17 | Truscott Reserve | Construct a new playground (none existing) | Glenroy | \$\$\$\$ | L | N | N | Y | N | N | N |
| 150 | GR18 | W J Turner Reserve William Turner Reserve | Upgrade of existing playground. | Glenroy | \$\$\$\$ | L | N | N | Y | N | N | N |
| 151 | GR19 | Mott Reserve | Upgrade of existing playground. | Glenroy | \$\$\$\$ | L | N | N | Y | N | N | N |
| 152 | GR20 | Fran Street Park | Upgrade of existing playground. | Glenroy | \$\$\$\$ | M | N | N | Y | N | N | N |
| 153 | GR21 | Kingsford Smith Ulm Reserve | Improvements including playground upgrade, and design and construction of a wetland, stormwater treatment including improving the quality of public open space by creating new publicly accessible habitat, walking tracks and improved access to nature and biodiversity. | Glenroy | \$\$\$\$ | M | N | N | Y | Y | N | N |
| 154 | GR22 | Laherty Reserve | Upgrade of existing playground. | Glenroy | \$ | L | N | N | Y | N | N | N |
| 155 | GR23 | Belair Avenue Park | Upgrade of existing playground. | Glenroy | \$ | L | N | N | Y | N | N | N |
| 156 | GR24 | Glenroy Train Station | Upgrade of existing playground. | Glenroy | \$\$\$\$ | L | N | N | Y | N | N | N |
| 157 | GR25 | Sages Road Retarding Basin | Sages Road Retarding Basin upgrade | Glenroy | \$\$\$\$ | M | N | N | Y | Y | N | N |
| 158 | GR26 | Gowanbrae Retarding Basin | Gowanbrae Retarding Basin upgrade. | Glenroy | \$\$\$\$ | M | N | N | Y | Y | N | N |

| | | | | | | | | | | | | |
|-----|------------|-------------------------------------------------------------------------|----------------------------------------------------------------------------------------------------------------------------------------------------------------------------------------------------------------------------|-----------|----------|---|---|---|---|---|---|---|
| 159 | GR27 | Northern Golf Course | "Northern Tan" proposal to create a 3km circuit track in partnership with Northern Golf Course. | Glenroy | \$\$\$ | H | N | Y | N | Y | Y | Y |
| 160 | GR28 | Glenroy Specialist School | AAA park and play revitalisation project in partnership with Glenroy Specialist School. | Glenroy | \$\$\$\$ | H | N | N | Y | N | N | N |
| 161 | GR29 | Campbellfield Retarding Basin | Joint project with Melbourne Water to improve public open space access. | Glenroy | \$\$\$ | M | N | N | N | Y | N | Y |
| 162 | GR30 | Jack Roper Retarding Basin | Joint project with Melbourne Water to improve public open space access. | Glenroy | \$\$\$ | M | N | N | N | Y | N | Y |
| 163 | GR31 | Ivan Page Reserve | Upgrade of existing playground. | Glenroy | \$ | M | N | N | Y | N | N | N |
| 164 | GR32 (NEW) | Bourchier Street Reserve Road closure and open space enhancement | Close part of Bourchier Street (opposite 8 Bourchier Street) to create new open space, joining the existing median strip | Glenroy | \$\$\$ | M | Y | Y | Y | N | N | N |
| 165 | GW01 | Gowanbrae Riverwalk | Upgrade and enhancement of existing playground. | Gowanbrae | \$\$\$\$ | M | N | N | Y | N | N | N |
| 166 | GW02 | Gowanbrae North Of Primula | Gowanbrae Primular Boulevard NRM upgrade to enhance amenity of open space. | Gowanbrae | \$ | M | N | N | Y | N | N | N |
| 167 | GW03 | Gowanbrae Community Reserve | Improvements to Gowanbrae Community Reserve including the installation of a fenced dog park in the western section of the park to address a gap area, the upgrade of the existing playground including shelter, taps, BBQ. | Gowanbrae | \$\$\$ | M | N | N | Y | N | N | N |
| 168 | GW04 | Gowanbrae Batter | Improve shared path access from Gowanbrae Drive and Seggan Circuit to the existing Moonee Ponds Creek Trail on the western side of the creek. | Gowanbrae | \$ | H | N | N | N | N | Y | Y |
| 169 | GW05 | Elms Court Reserve | Provide a dog off-leash area, upgrade the playground and exercise equipment. | Gowanbrae | \$\$\$ | L | N | N | Y | N | N | N |
| 170 | HD01 | New Local Park 1 in Hadfield | Deliver a new Local Open Space in the SW of the suburb between South Street and Middle Street. Must include Play Space, and two other functions (potentially Dog Space) | Hadfield | \$\$\$\$ | H | Y | Y | N | N | N | N |
| 171 | HD02 | New Neighbourhood Park 1 in Hadfield | Deliver a new Neighbourhood Open Space in the general vicinity of Katoomba Street. Must include a Play Space and additional supporting function (likely Passive Recreation) | Hadfield | \$\$\$\$ | H | Y | Y | N | N | N | N |
| 172 | HD03 | Volga Street Reserve | Volga Street Reserve upgrade to improve quality and functions through more seating and NRM. | Hadfield | \$ | H | N | N | Y | N | N | N |
| 173 | HD04 | Keenan Street Reserve | Upgrade the open space to improve quality and functions including installation of a play space and additional seating and tables to support a passive recreation function. | Hadfield | \$\$\$\$ | M | N | N | Y | N | N | N |

| | | | | | | | | | | | | |
|-----|------------|---------------------------------|---------------------------------------------------------------------------------------------------------------------------------------------------------------------------------------------------------------------------------------------------------------------------------------------------------------------------|----------------|----------|---|---|---|---|---|---|---|
| 174 | HD05 | GMCT - Fawknor Cemetery | Council partnership with GMCT Fawknor Cemetery. | Hadfield | \$ | M | N | N | N | N | N | Y |
| 175 | HD06 | Tony Mommsen Reserve playground | Tony Mommsen Reserve playground upgrade | Hadfield | \$\$ | M | N | N | Y | N | N | N |
| 176 | HD07 | Reddish Reserve | Improvements to open space including playground upgrade, upgrade of playing fields including levelling and turf renewal, new drainage, new irrigation system, sports field lighting (min 100 lux), and design and construction of WSUD stormwater treatment system | Hadfield | \$\$\$\$ | M | N | N | Y | Y | N | N |
| 177 | HD08 | Glenroy Lions Park | Upgrade and enhancement of existing playground. | Hadfield | \$\$ | M | N | N | Y | N | N | N |
| 178 | HD09 | Middle Street Reserve | Upgrade and enhancement of existing playground. | Hadfield | \$\$ | M | N | N | Y | N | N | N |
| 179 | HD10 | Martin Reserve | Improvements to Martin Reserve including upgrade and enhancement of existing playground, upgrade of planning field including levelling and turf renewal, new drainage, new irrigation system, sports field lighting (min 100 lux), and design and construction of stormwater treatment and harvesting system and wetland. | Hadfield | \$\$\$\$ | M | N | N | Y | N | N | N |
| 180 | MU01 | Municipal-wide | Upgrades to stairs, handrails and access ramps along open spaces and waterway frontages (including the Merri and Moonee Ponds Creek corridors) to improve accessibility to more persons. | Municipal-wide | \$\$ | O | N | N | N | N | Y | Y |
| 181 | MU02 | Links Program | Upgrade of existing playground. | Municipal-wide | \$ | O | N | N | Y | N | N | N |
| 182 | MU03 | Municipal-wide | Council to invest in open space upgrades (tree planting, playground and sports grounds) to allow improved public open space use. | Municipal-wide | \$\$\$\$ | O | Y | N | N | N | N | Y |
| 183 | MU04 | Municipal-wide | Create a flagship All Access Abilities playground for Merri-bek (location to be determined) | Municipal-wide | \$\$\$\$ | H | N | N | Y | N | N | N |
| 184 | MU05 | Municipal-wide | Installation of public art across Merri-bek Open Space which promotes and acknowledges Merri-bek's First Nations history. These will improve the user experience in these spaces, increase activities, etc. | Municipal-wide | \$ | O | N | N | Y | N | N | N |
| 185 | MU06 | Municipal-wide | Installation of exercise equipment for older people at various location across the Municipality. | Municipal-wide | \$\$\$ | O | N | N | Y | N | N | N |
| 186 | MU07 | Merri-Creek | Improvement and expansion of the Merri Creek environs including new and improved crossings, paths, seating, fencing, signage, playgrounds. | Municipal-wide | \$\$\$\$ | M | N | N | N | Y | Y | Y |
| 187 | MU08 (NEW) | Municipal-wide | Provide new public toilets across our entire open space network | Municipal-wide | \$\$\$\$ | H | N | N | N | N | N | Y |
| 188 | MU09 (NEW) | Municipal-wide | Provide new paths links within and between open spaces across the municipality | Municipal-wide | \$\$\$\$ | O | N | N | Y | Y | N | Y |

| | | | | | | | | | | | | |
|-----|------|-----------------------------------------------|------------------------------------------------------------------------------------------------------------------------------------------------------------------------------------------------------------------------------------------------------------------------------------------------------------------------------------------------------------------------------------------------------------------|-------------------|----------|---|---|---|---|---|---|---|
| 189 | OP01 | Ethel Street Reserve | Provide play space and dog off-lead space in space between Ethel Street and Gregory Street. | Oak Park | \$\$\$\$ | H | N | N | N | Y | N | Y |
| 190 | OP02 | John Pascoe Fawcner Reserve | Improvements to John Pascoe Fawcner including playground upgrade, nature play and informal sports opportunities to nursery corner end of Reserve, design and construction of WSUD stormwater treatment system, and provide improved lighting, signage and safety provision, upgrade of playing field including levelling and turf renewal, new drainage, new irrigation system, sports field lighting (100 LUX). | Oak Park | \$\$\$\$ | M | N | N | Y | Y | Y | Y |
| 191 | OP03 | Father Gavan Fitzpatrick Reserve | Upgrade and enhancement of existing playground. | Oak Park | \$\$ | H | N | N | Y | N | N | N |
| 192 | OP04 | Bryant Family Reserve | Improving the quality of public open space by creating new publicly accessible habitat, walking tracks, access to nature and biodiversity. Including improvements to creek corridor habitat, seating, table and shelter facilities, upgrade of existing playground and design and construction of wetland (stormwater treatment). | Oak Park | \$\$\$\$ | M | N | Y | N | N | N | Y |
| 193 | OP05 | New Neighbourhood Park 1 in Oak Park | Deliver a new Neighbourhood Space to address northern gap area. This open space will be multi-functional and provide a play space and potential dog space | Oak Park | \$\$\$\$ | M | Y | N | N | Y | N | N |
| 194 | OP06 | John Vandeloo Reserve | Upgrade park as multi-functional park space with community uses, including upgrade and enhancement of existing playground. Remove fence to Community Hall and improve interface. Expand seating, shelter and BBQ facilities. Explore community garden and community uses. | Oak Park | \$\$ | M | N | N | N | Y | N | Y |
| 195 | OP07 | New Pocket Park 1 in Oak Park | Deliver a Pocket Park space to address the gap area to the east of the Oak Park NAC and provide a small-scale open space within close proximity to the Oak Park NAC. Should include play space and opportunities for passive recreation | Oak Park | \$\$\$\$ | M | Y | N | N | Y | N | Y |
| 196 | OP08 | Oak Park Reserve | Improvements to Oak Park including playground upgrade, upgrade to playing field including levelling and turf renewal, new drainage, new irrigation system, sports field lighting (min 100 lux) and installation of a AFL/cricket field. | Oak Park | \$\$\$\$ | M | N | N | Y | N | N | N |
| 197 | OP09 | Naree Naree | Upgrade and enhancement of existing playground. | Oak Park | \$\$\$\$ | M | N | N | Y | N | N | N |
| 198 | OP10 | Stevenson Reserve | Upgrade and enhancement of existing playground | Oak Park | \$\$ | L | N | N | Y | N | N | N |
| 199 | OP11 | Rayner Reserve | Upgrade playing field - levelling and turf renewal, new drainage, new irrigation system, sports field lighting (min 100 lux) | Oak Park | \$\$\$\$ | M | N | N | Y | N | N | N |
| 200 | PS01 | New Neighbourhood Park 1 in Pascoe Vale South | Deliver a Neighbourhood Park with multiple functions due to proximity to activity centre, including play space to address gap area. Potential fenced dog park subject to identified community need | Pascoe Vale South | \$\$\$\$ | H | Y | Y | N | N | N | N |
| 201 | PS02 | New Neighbourhood Park 2 in | Deliver a Neighbourhood Park with multiple functions due to proximity to activity centre, including play space to address | Pascoe Vale South | \$\$\$\$ | M | Y | Y | N | N | N | N |

| | | | | | | | | | | | | |
|-----|------|----------------------------------------|---------------------------------------------------------------------------------------------------------------------------------------------------------------------------------------------------------------------------------------------------------------------------------------------------------------------------------------------|-------------------|----------|---|---|---|---|---|---|---|
| | | Pascoe Vale South | gap area. Potential fenced dog park subject to identified community need | | | | | | | | | |
| 202 | PS03 | New Pocket Park 1 in Pascoe Vale South | Deliver a Pocket Park to address a gap in the south of the suburb for play and passive recreation and augment existing service levels (which leans on a few larger parks and Morris Reserve accessible over CityLink) | Pascoe Vale South | \$\$\$\$ | H | Y | Y | N | N | N | N |
| 203 | PS04 | Kelvin Thomson Park | Improvements to Kelvin Thomas Park including playground upgrade, design and construction of WSUD wetland and stormwater treatment to the quality of public open space by creating new publicly accessible habitat, walking tracks, access to nature and biodiversity, and provision of an off-leash dog area and associated infrastructure. | Pascoe Vale South | \$\$\$\$ | M | N | N | Y | Y | N | N |
| 204 | PS05 | Kernan Street Park | Provide nature conservation planting in Kernan Street Park and ped path to Tate Park along creek. | Pascoe Vale South | \$ | M | N | N | N | Y | Y | N |
| 205 | PS06 | Unnamed Park (Parkstone Park) | Upgrade park for pocket passive recreation including seating and planting | Pascoe Vale South | \$ | H | N | N | Y | N | N | N |
| 206 | PS07 | Parkside Boulevard | Upgrade southern end of Parkside Boulevard to provide play space opportunity with supporting seating, amenities and planting. | Pascoe Vale South | \$\$\$\$ | M | N | N | Y | N | N | N |
| 207 | PS08 | Winona Grove Link | Provide safety upgrades and clear signage to Winoria Grove Link | Pascoe Vale South | \$ | M | N | N | Y | N | Y | N |
| 208 | PS09 | Coonans Road Reserve | Upgrade to provide local play space and passive recreation opportunities with supporting amenities and planting. | Pascoe Vale South | \$\$\$\$ | L | N | N | Y | N | N | N |
| 209 | PS10 | Paul Huckin Park | Upgrade and enhancement of existing playground and construct new seating | Pascoe Vale South | \$ | M | N | N | Y | N | N | N |
| 210 | PS11 | Westgate Street Park | Deliver full Neighbourhood Park with play space and additional functions. | Pascoe Vale South | \$\$\$\$ | M | N | N | Y | N | N | N |
| 211 | PS12 | Morris Reserve | Morris Reserve playground upgrade. | Pascoe Vale South | \$ | L | N | N | Y | N | N | N |
| 212 | PS13 | Mitchell Reserve | Upgrade and enhancement of existing playground and design and construction of WSUD stormwater treatment system to improve the quality of the open space by providing additional irrigation for the sports field (at the Pascoe Vale College) and providing a publicly accessible raingarden / swale for public enjoyment in the parkland. | Pascoe Vale South | \$\$\$\$ | M | N | N | Y | Y | N | N |
| 213 | PS14 | Future dog park in Pascoe Vale South | Create a new dog park. | Pascoe Vale South | \$ | M | N | N | Y | N | N | N |
| 214 | PS15 | F W Olver Reserve | Upgrade and enhancement of existing playground with focus on nature play. | Pascoe Vale South | \$ | M | N | N | Y | N | N | N |
| 215 | PS16 | Shore Reserve | Upgrade playing field - levelling and turf renewal, new drainage, new irrigation system, sports field lighting (min 100 lux), upgrade playground and construct shared path through the reserve | Pascoe Vale South | \$\$\$\$ | H | N | N | Y | N | N | N |
| 216 | PS17 | Brearley Reserve | Upgrade and enhancement to existing exercise equipment and playground, as well as upgrade of the playing field | Pascoe Vale South | \$\$\$\$ | L | N | N | Y | N | N | N |

| | | | | | | | | | | | | |
|-----|------------|------------------------------------------------------------------------------------------|-----------------------------------------------------------------------------------------------------------------------------------------------------------------------------------------------------------------------------------------------------------------------------------------------------------------------------------------------------------------------------------------------------------------------------------------------------------------------------------------------------------|-------------------|----------|---|---|---|---|---|---|---|
| | | | including new drainage, grass conversion and sport field lighting (100 LUX LED). | | | | | | | | | |
| 217 | PS18 | Pascoe Vale Primary School WSUD | Design and construction of WSUD stormwater treatment system | Pascoe vale South | \$\$\$\$ | M | N | N | N | Y | N | N |
| 218 | PS19 (NEW) | Moonee Ponds Creek Corridor land acquisition (5 of 5) - The Boulevard PASCOE VALE SOUTH. | Land acquisition at the rear of property at The Boulevard, Pascoe Vale South | Pascoe Vale South | \$\$\$\$ | H | N | N | N | Y | Y | N |
| 219 | PV01 | New Neighbourhood Park 1 in Pascoe Vale | Deliver a Neighbourhood Park with multiple functions, including play space to address gap area. Potentially utilise central median in Bolingbroke Street | Pascoe Vale | \$\$\$\$ | H | Y | Y | N | N | N | N |
| 220 | PV02 | New Neighbourhood Park 2 in Pascoe Vale | Deliver a Neighbourhood Park with multiple functions, including play space to address gap area. Potential fenced dog park subject to identified community need | Pascoe Vale | \$\$\$\$ | H | Y | Y | N | N | N | N |
| 221 | PV03 | New Neighbourhood Park 3 in Pascoe Vale | Deliver a Neighbourhood Park with multiple functions, including play space to address gap area. Required as Derby Street Reserve Pocket Park is a low-quality open space asset with limited upgrade potential for high usage | Pascoe Vale | \$\$\$\$ | H | Y | Y | N | N | N | N |
| 222 | PV04 | Herbert Street Reserve | Provide play space on the western side of Herbert Reserve close to the Moonee Ponds Creek trail and installation of nature play linked to WSUD works. | Pascoe Vale | \$\$\$\$ | H | N | N | Y | N | N | N |
| 223 | PV05 | Bass Street Reserve | Improvements to Bass Street Reserve including the upgrade and enhancement of NRM and provision of facilities to support a dog off-leash area. | Pascoe Vale | \$\$ | M | N | N | Y | N | N | N |
| 224 | PV06 | Esslemont Reserve | Acquire land with access to Avoca Street to improve southern and eastern accessibility to park. | Pascoe Vale | \$\$\$\$ | H | N | N | Y | N | Y | Y |
| 225 | PV07 | Payne Reserve | Improvements to Payne Reserve including Upgrade and enhancement of existing playground and park and providing a safe above ground or below ground link over the railway line to improve connectivity and link to the Westbreen Creek linear corridor | Pascoe Vale | \$\$ | M | N | N | Y | N | Y | N |
| 226 | PV08 | James Reserve | Provide clear and separated pedestrian/shared path link between Norton Street and Prospect Street with improved lighting and upgrade the eastern segment of James Reserve to provide expanded functions, including passive recreation, potential seating, tables, shelter, BBQ and planting. | Pascoe Vale | \$\$ | M | N | N | Y | N | Y | N |
| 227 | PV09 | Rogers Reserve | Improvements to Rogers Reserve including playground upgrade, improved amenity and safety of pedestrian link east along the southern side of the Pascoe Vale Outdoor Pool/Community Centre and through to Cumberland Road. Improved southern entrance from Eddie Street. Realign boundary fencing to Outdoor Pool to provide publicly accessible open spaces to the western and northern edges of Rogers Reserve and improve linkages. Provide opportunities for additional open space functions including | Pascoe Vale | \$\$ | M | N | N | Y | Y | Y | N |

| | | | | | | | | | | | | |
|-----|------------|------------------------------------------------------|-------------------------------------------------------------------------------------------------------------------------------------------------------------------------------------------------------------------------------------------------------------------------------------------------------------------------------------------------------------------|-------------|----------|---|---|---|---|---|---|---|
| | | | passive recreation and potential dog park in northern and western areas preserving heritage values of eastern landscape gardens. | | | | | | | | | |
| 228 | PV10 | Martyn Reserve | Upgrade and enhancement of existing playground. | Pascoe Vale | \$\$ | L | N | N | Y | N | N | N |
| 229 | PV11 | Future dog park in Pascoe Vale | Create a new dog park. | Pascoe Vale | \$\$ | M | N | N | Y | N | N | N |
| 230 | PV12 | Peachey Court/Farview St | Upgrade existing park | Pascoe Vale | \$\$ | M | N | N | Y | N | N | N |
| 231 | PV13 | Plumridge Park | Upgrade and enhancement of existing playground | Pascoe Vale | \$\$\$\$ | M | N | N | Y | N | N | N |
| 232 | PV14 | Cole Reserve | Upgrade existing playground, playing fields (new drainage, leveling, turf renewal and new irrigation), and sports lighting, and create a shared user path at Martin Street streetscape that connects into Cole Reserve to lead to the Gavin Park trail. | Pascoe Vale | \$\$\$\$ | H | N | N | Y | N | Y | N |
| 233 | PV15 | Austin Crescent Reserve | Provide a playground upgrade and creation of a linear park along Westbreen Creek for flood mitigation between Austin Crescent Reserve and the Moonee Ponds Creek to align with Westbreen Creek Plan action. "Daylighting" of Westbreen Creek with revegetation connection swale, fence replacement with vegetative buffer, and wetland interpretative signage. | Pascoe Vale | \$\$\$\$ | H | N | N | Y | Y | N | N |
| 234 | PV16 | Raeburn Reserve | Upgrade existing playground and exercise equipment, installation of sports field lighting, design and construction of WSUD storm water treatment system and create a shared user path along Percy Grove and Olive Grove that goes between Raeburn Reserve in between. | Pascoe Vale | \$\$\$\$ | H | N | N | Y | Y | Y | N |
| 235 | PV17 | Gavin Park | Purchase rear of properties on Zenith and Longview Street where they obstruct the open space corridor. | Pascoe Vale | \$\$\$\$ | L | N | N | N | Y | Y | N |
| 236 | PV18 | K W Joyce Reserve | Design and construction of stormwater treatment raingarden improving the quality of public open space by creating new publicly accessible habitat, walking tracks, access to nature and biodiversity. | Pascoe Vale | \$\$\$\$ | H | N | N | N | Y | N | N |
| 237 | PV19 | Hallam Reserve | Improvements to Hallam Reserve including playground upgrade with NRM focus. | Pascoe Vale | \$\$\$\$ | M | N | N | Y | Y | N | N |
| 238 | PV20 | Jacinta Bartlett Reserve | Upgrade and enhancement of existing playground. | Pascoe Vale | \$\$\$\$ | H | N | N | Y | N | N | N |
| 239 | PV21 (NEW) | James Reserve Road closure for additional open space | Close part of the Norton Street and Dromana Avenue to create 1 larger open space at James Reserve (instead of 3 separate open spaces) | Pascoe Vale | \$\$\$ | M | Y | Y | Y | N | N | Y |
| 240 | PV22 (NEW) | Penzance Street Road closure to better connect | Penzance Street Road closure to better connect Cole Reserve and Gavin Park | Pascoe Vale | \$\$\$ | M | Y | Y | Y | Y | Y | N |

| | | | | | | | | | | | | |
|--|--|--------------------------------|--|--|--|--|--|--|--|--|--|--|
| | | Cole Reserve and Gavin Park | | | | | | | | | | |
|--|--|--------------------------------|--|--|--|--|--|--|--|--|--|--|