

Canopy Tree Planting in Residential Areas

Fact Sheet

Through Amendment C189, Council is proposing to improve canopy tree planting in new development to help shade and cool Moreland. This will help address the increase in temperatures Moreland is experiencing due to the Urban Heat Island Effect (UHIE).

What does the Amendment do?

Amendment C189 aims to increase the size of trees being planted in new development by introducing new landscaping requirements in the Moreland Planning Scheme that will:

- Ensure canopy trees are included in the design of new houses;
- Ensure there is enough space for new canopy trees to be able to grow; and
- Provide greater clarity to applicants and property owners when designing development with multiple dwellings.

How will the Moreland Planning Scheme change?

There will be two key changes to the Moreland Planning Scheme:

- New tree planting requirements within the Residential Zone Schedules; and
- Modifying local policy and the Moreland Tree Planting Manual for Residential Zones to be consistent with the new tree planting requirements.

The Moreland Tree Finder Tool available on Council's website assists in choosing an appropriate tree species moreland.vic.gov.au/environment-bins/trees/tree-finder

Does the amendment affect me?

This amendment affects all land zoned Neighbourhood Residential Zone, General Residential Zone, Residential Growth Zone and Mixed Use Zone.

Can I still build on my property?

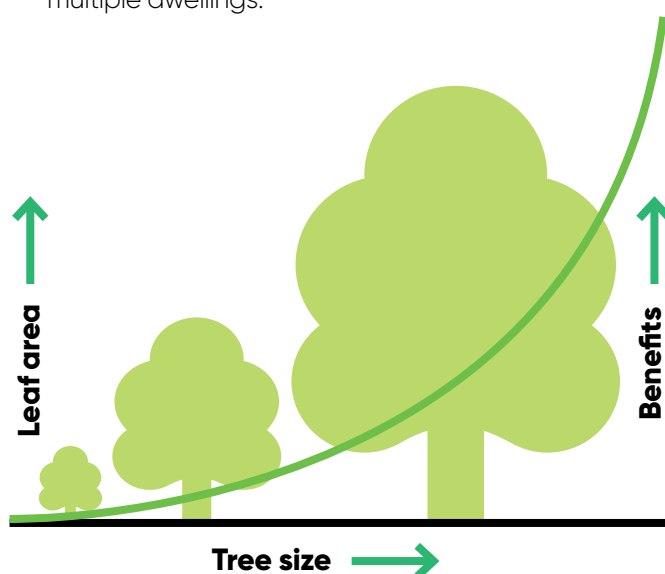
Our analysis has found that the proposed canopy tree requirements will not impact the ability to build on your property, including building more than one house.

Find out more

You can view detailed information about the proposed changes and the amendment process at moreland.vic.gov.au/amendment-c189

Speak to an Officer

Council Planning Officers are here to answer your questions about the amendment. If you'd like to discuss how the changes might affect you, please contact the Council's Strategic Planning Unit on 9384 9215.



Make a submission

Amendment C189 is now on public exhibition and you are welcome to make a written submission to Council to express your views.

**Submissions must be received by:
Friday, 20 December 2019**

Submissions must be made in writing, giving your name and contact address and clearly stating the grounds on which the amendment is supported or opposed and indicating what changes (if any) should be made.

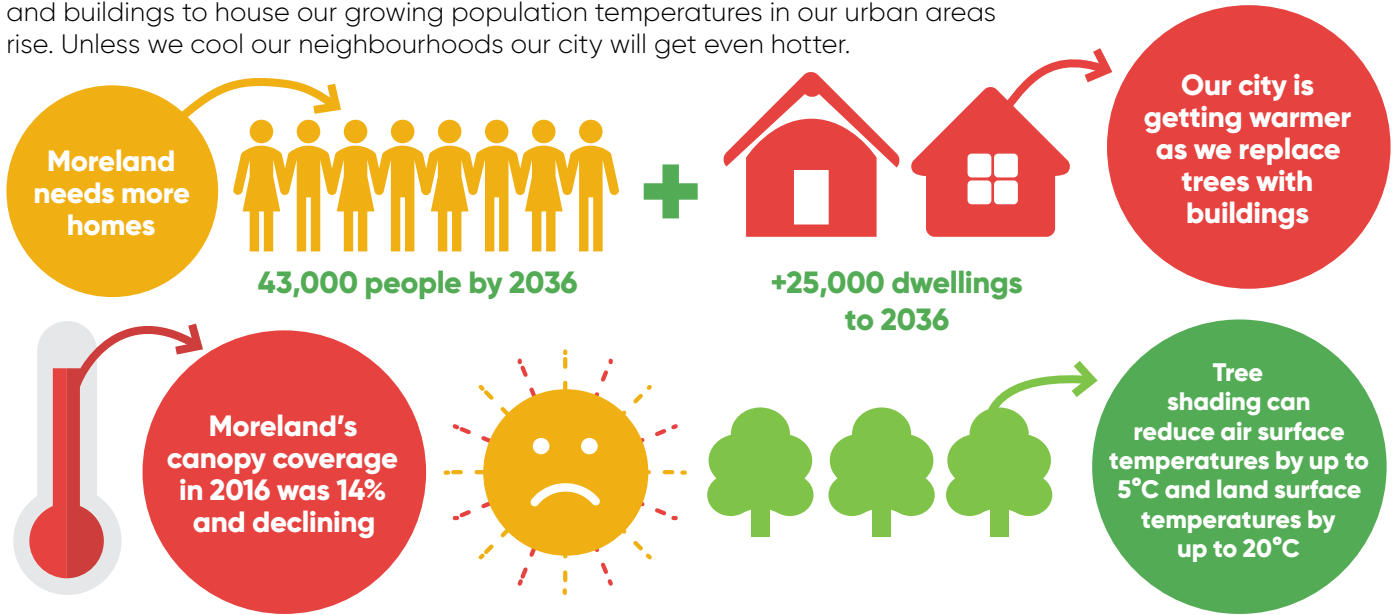
Submit your views by:

- **Email:** strategicplanning@moreland.vic.gov.au
Please include 'Submission to Amendment C189' in the subject line.
- **Website:** Submissions can be made directly through Council's website moreland.vic.gov.au/amendment-c189
- **Post:** Strategic Planning, Submission to Amendment C189, Moreland City Council
Locked Bag 10, Moreland VIC 3058

Canopy trees in Moreland

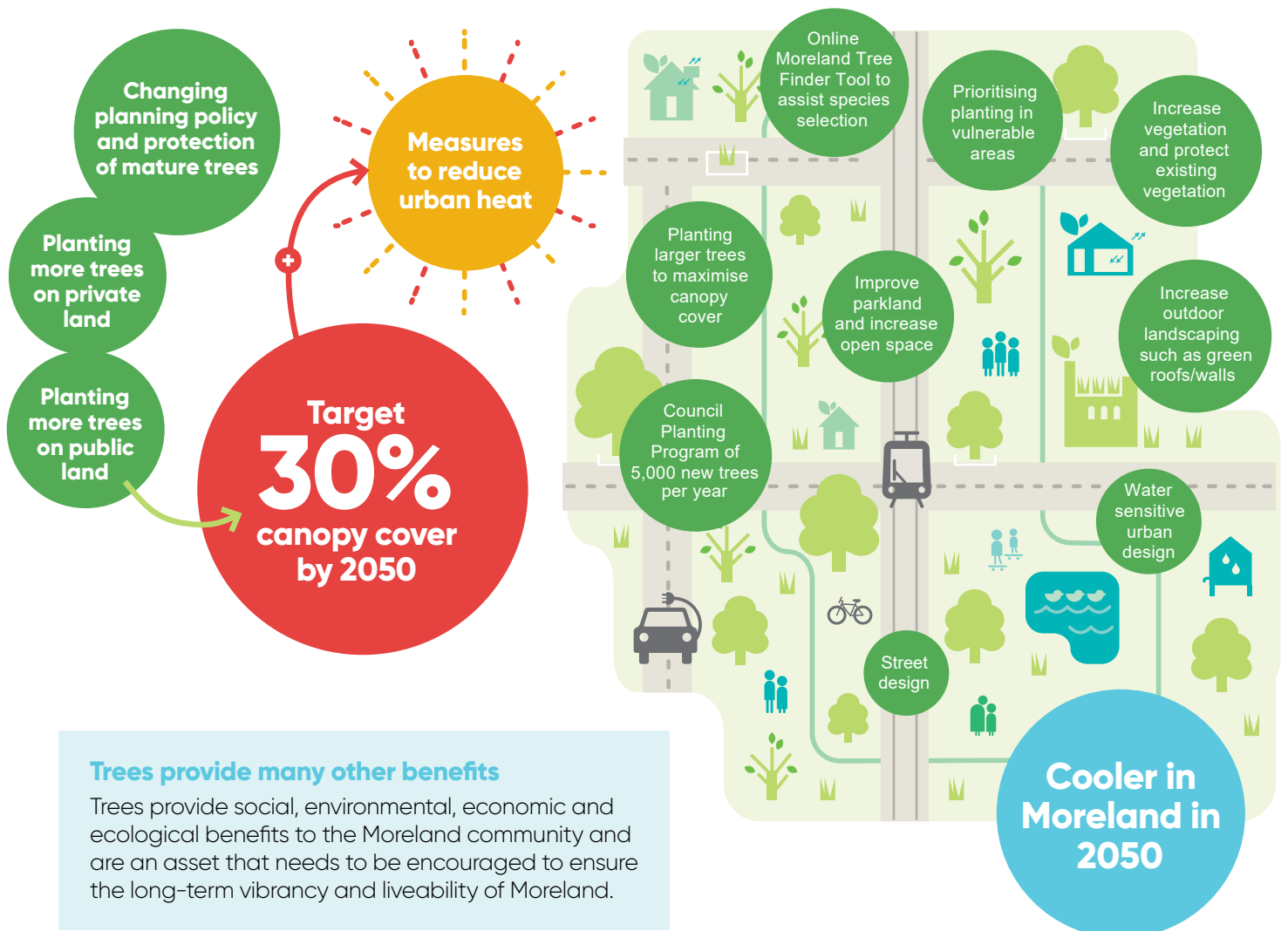
Moreland's urban climate is hot and getting hotter

As we replace green trees with hard surfaces such as roads, driveways, paving and buildings to house our growing population temperatures in our urban areas rise. Unless we cool our neighbourhoods our city will get even hotter.



Planting more canopy trees will shade and cool Moreland

Transforming Moreland into a cool, liveable city with trees cannot be achieved by Council alone. It will require investment and commitment from residents, businesses, the development industry, community groups and many others across the community to increase tree canopy coverage throughout Moreland.



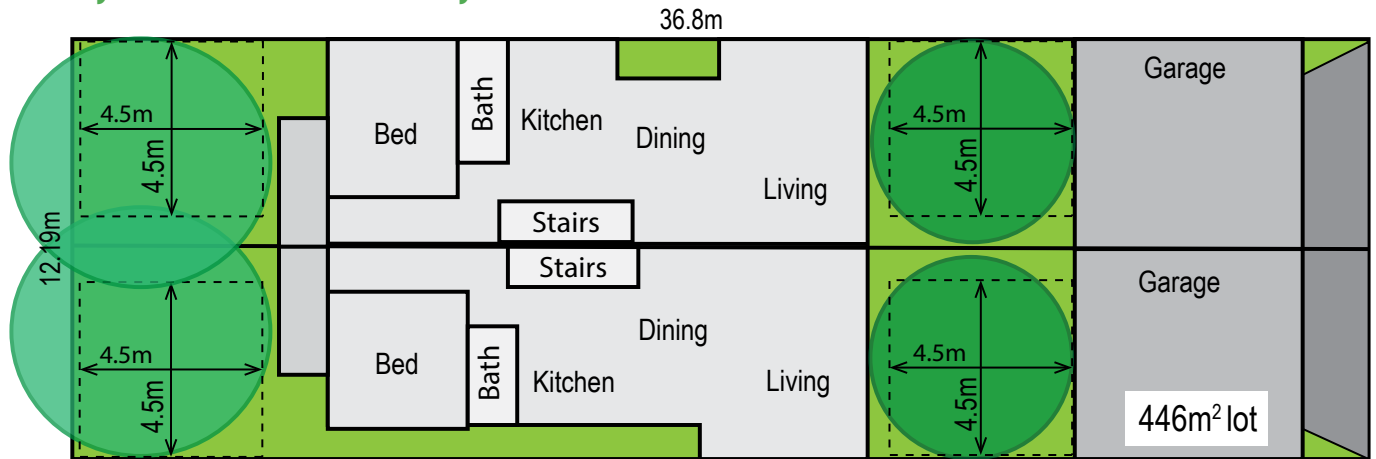
Trees provide many other benefits

Trees provide social, environmental, economic and ecological benefits to the Moreland community and are an asset that needs to be encouraged to ensure the long-term vibrancy and liveability of Moreland.

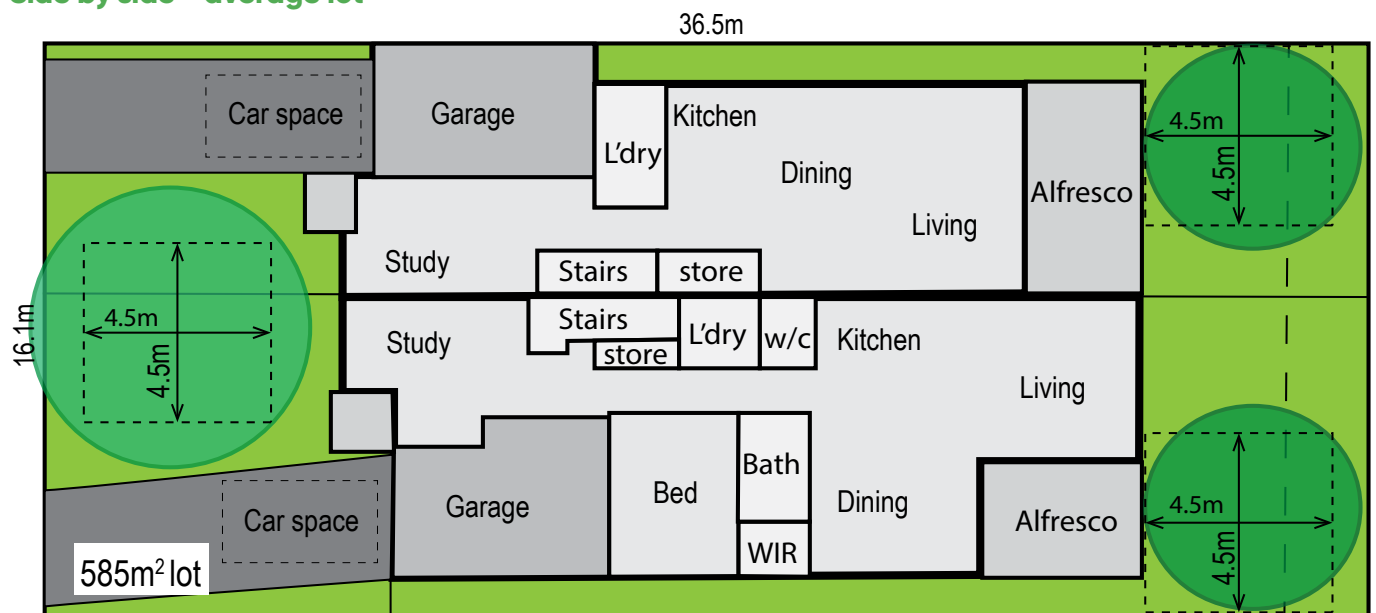
Examples of typical medium density development with the proposed tree requirements

The following pictures illustrate the proposed tree requirements can be easily incorporated within different types of medium density development occurring in Moreland.

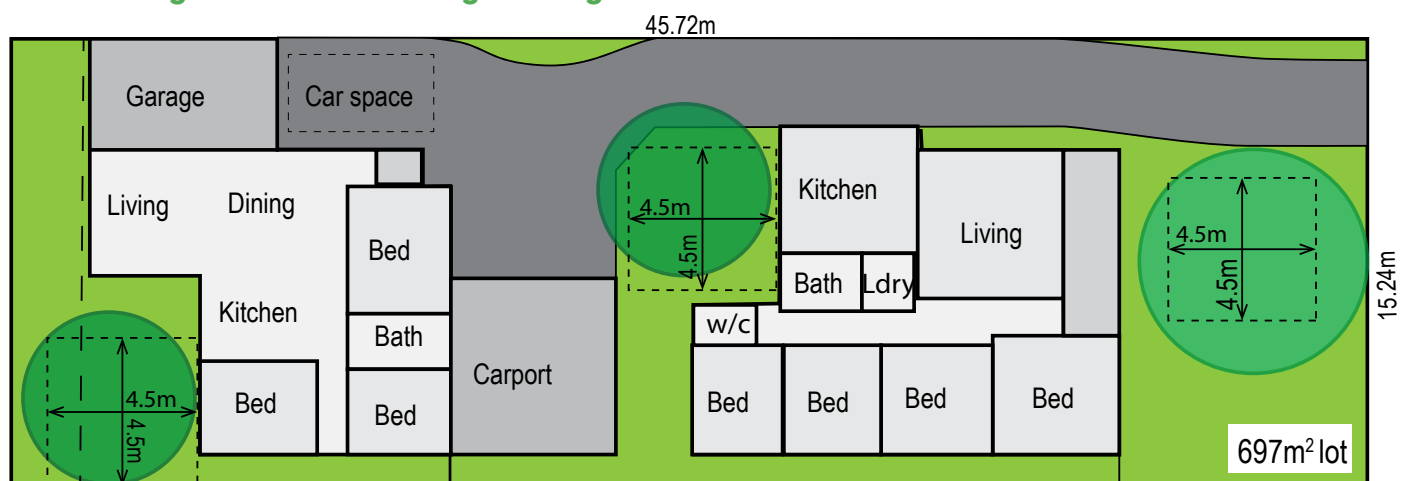
Side by side - small lot - laneway access



Side by side - average lot

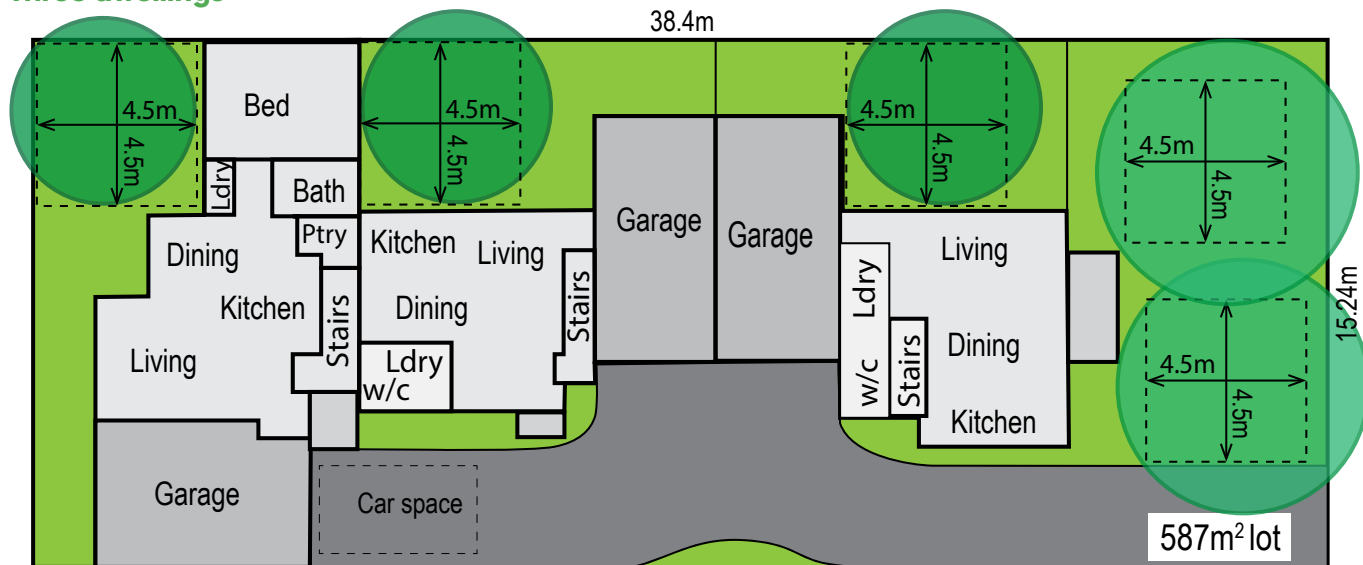


Two dwellings - retain the existing dwelling

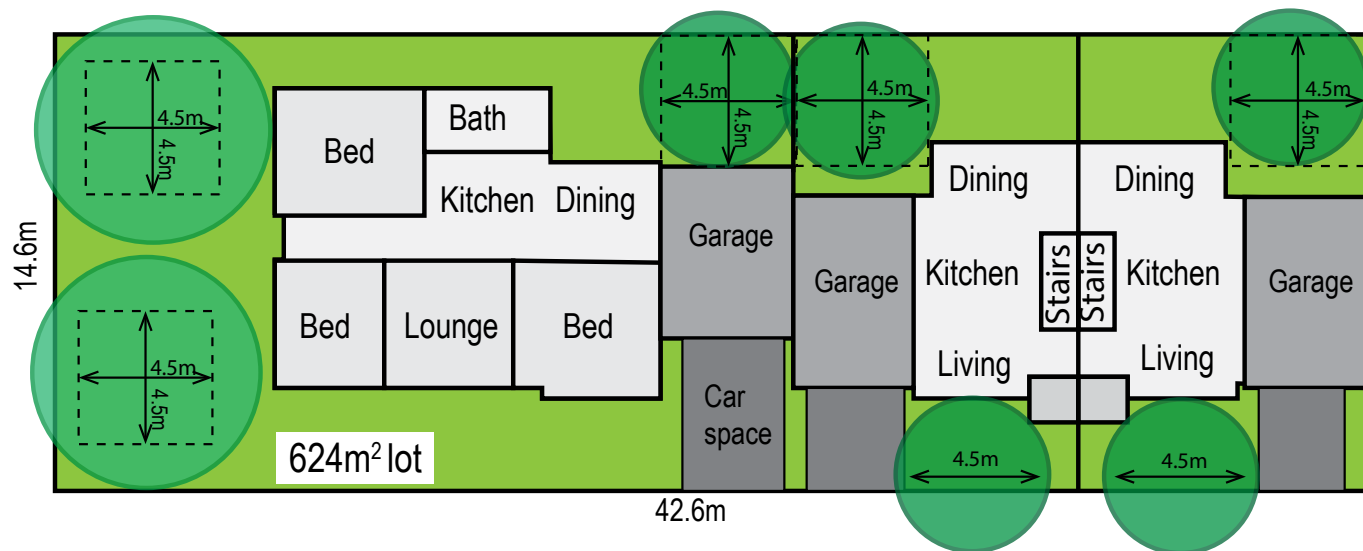


Examples of typical medium density development with the proposed tree requirements continued...

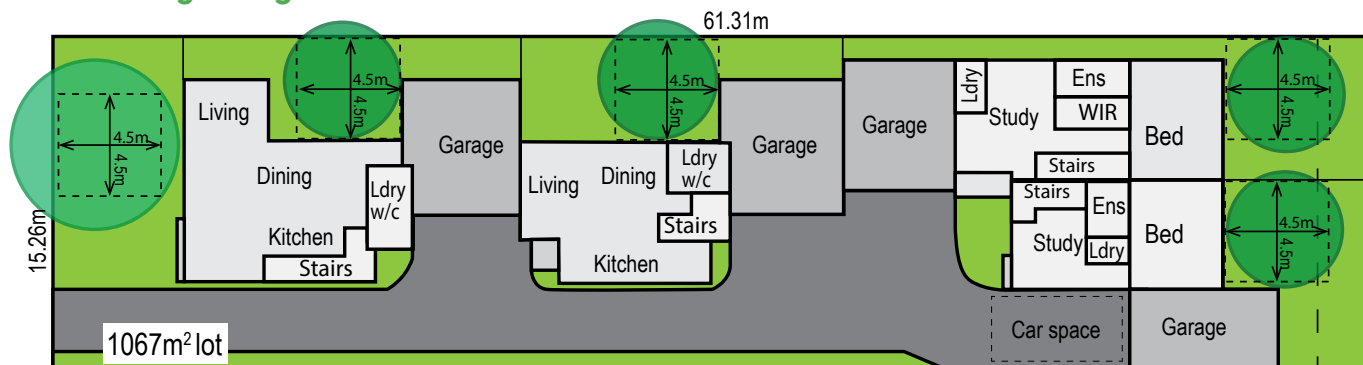
Three dwellings



Three dwellings - retain the existing dwelling - corner site



Four dwellings - large lot size



Moreland Language Link

有關摩爾蘭德市政廳的詳情請致電	9280 1910
Per informazioni sul Comune di Moreland telefonare a	9280 1911
Για πληροφορίες σχετικά με το Δήμο Moreland τηλεφωνήστε στο	9280 1912
للحصول على معلومات عن بلدية مورلاند اتصلوا على الرقم	9280 1913

Moreland Belediyesi hakkında bilgi almak için aranabilecek telefon	9280 1914
Nếu muốn biết thêm chi tiết về Hội đồng Thành phố Moreland, xin quý vị gọi số	9280 1915
मोरलैंड सिटी काउंसिल के बारे में जानकारी प्राप्त करने के लिए फोन करें	9280 1918
要进一步了解Moreland 市政府的信息，请拨打	9280 0750
मोरलैंड सिटी कौंसिल घाबरे व्पेची साखवारी लही रिप्रा वतवे देन वते	9280 0751

All other languages

including 阿拉伯语, Croatian, Tagalog, Indonesia, Polski, ӠӠӠӠ, Español, اردو	9280 1919
---	-----------

