

# PLANNING PROPERTY REPORT

From [www.planning.vic.gov.au](http://www.planning.vic.gov.au) at 17 November 2025 11:01 AM

## PROPERTY DETAILS

Address: **495-497 LYGON STREET BRUNSWICK EAST 3057**

Lot and Plan Number: **Lot 3 LP2682**

Standard Parcel Identifier (SPI): **3\LP2682**

Local Government Area (Council): **MERRI-BEK**

Council Property Number: **4202**

Planning Scheme: **Merri-bek**

Directory Reference: **Melway 29 K6**

[www.merri-bek.vic.gov.au](http://www.merri-bek.vic.gov.au)

[Planning Scheme - Merri-bek](#)

## UTILITIES

Rural Water Corporation: **Southern Rural Water**

Melbourne Water Retailer: **Yarra Valley Water**

Melbourne Water: **Inside drainage boundary**

Power Distributor: **CITIPOWER**

## STATE ELECTORATES

Legislative Council: **NORTHERN METROPOLITAN**

Legislative Assembly: **BRUNSWICK**

OTHER

Registered Aboriginal Party: **Wurundjeri Woi Wurrung Cultural  
Heritage Aboriginal Corporation**

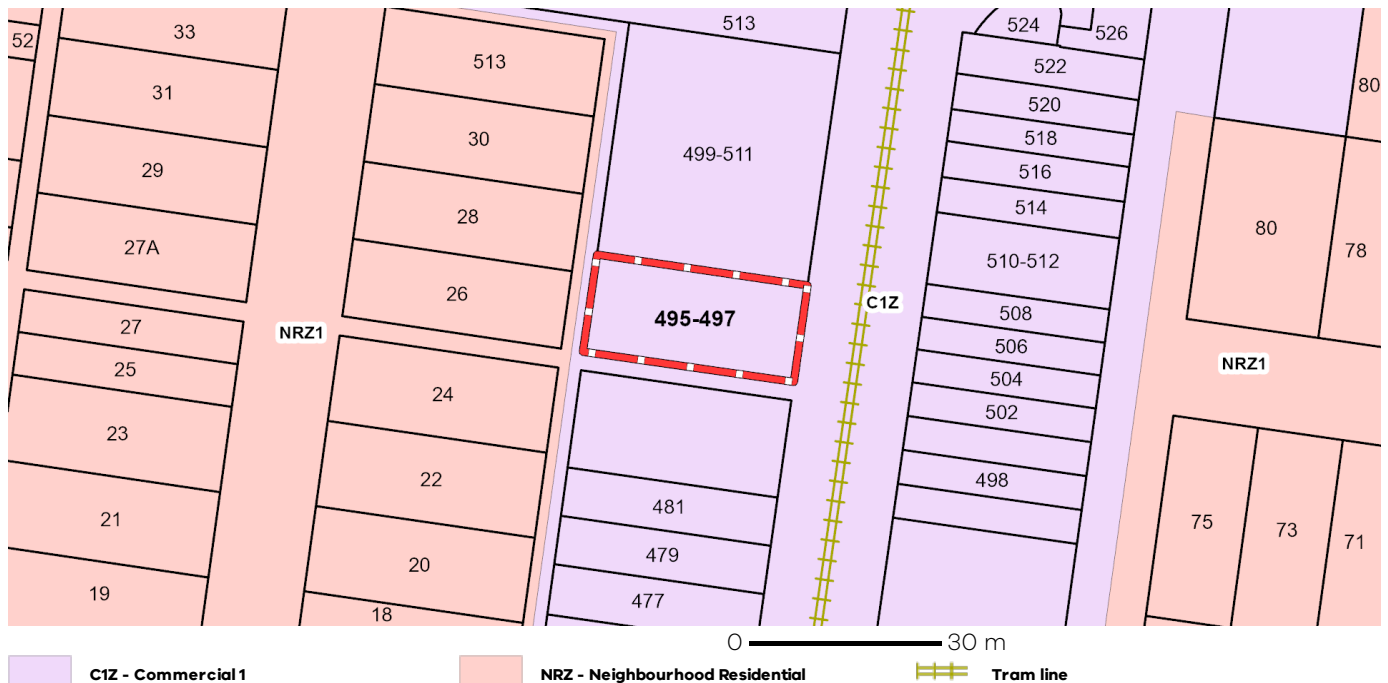
Fire Authority: **Fire Rescue Victoria**

[View location in VicPlan](#)

## Planning Zones

[COMMERCIAL 1 ZONE \(C1Z\)](#)

[SCHEDULE TO THE COMMERCIAL 1 ZONE \(C1Z\)](#)

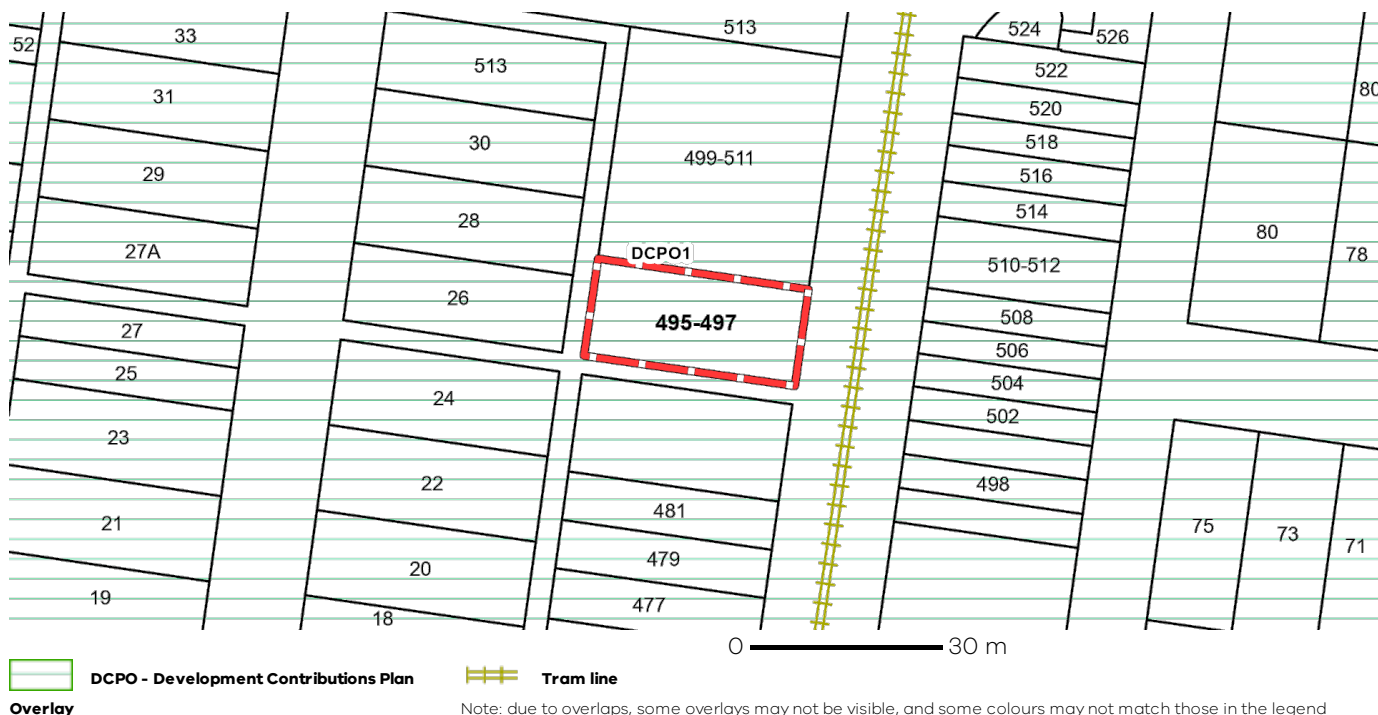


Note: labels for zones may appear outside the actual zone - please compare the labels with the legend.

## Planning Overlays

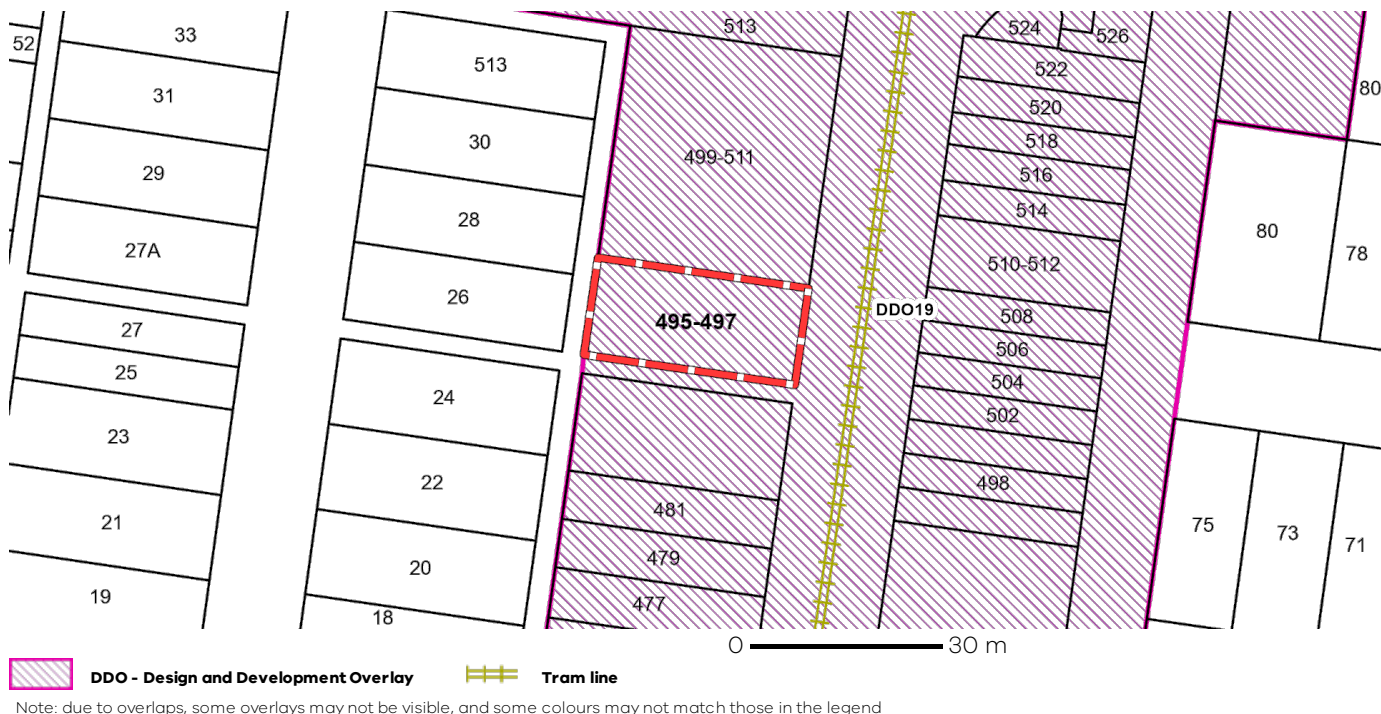
### DEVELOPMENT CONTRIBUTIONS PLAN OVERLAY (DCPO)

#### DEVELOPMENT CONTRIBUTIONS PLAN OVERLAY - SCHEDULE 1 (DCPO1)



### DESIGN AND DEVELOPMENT OVERLAY (DDO)

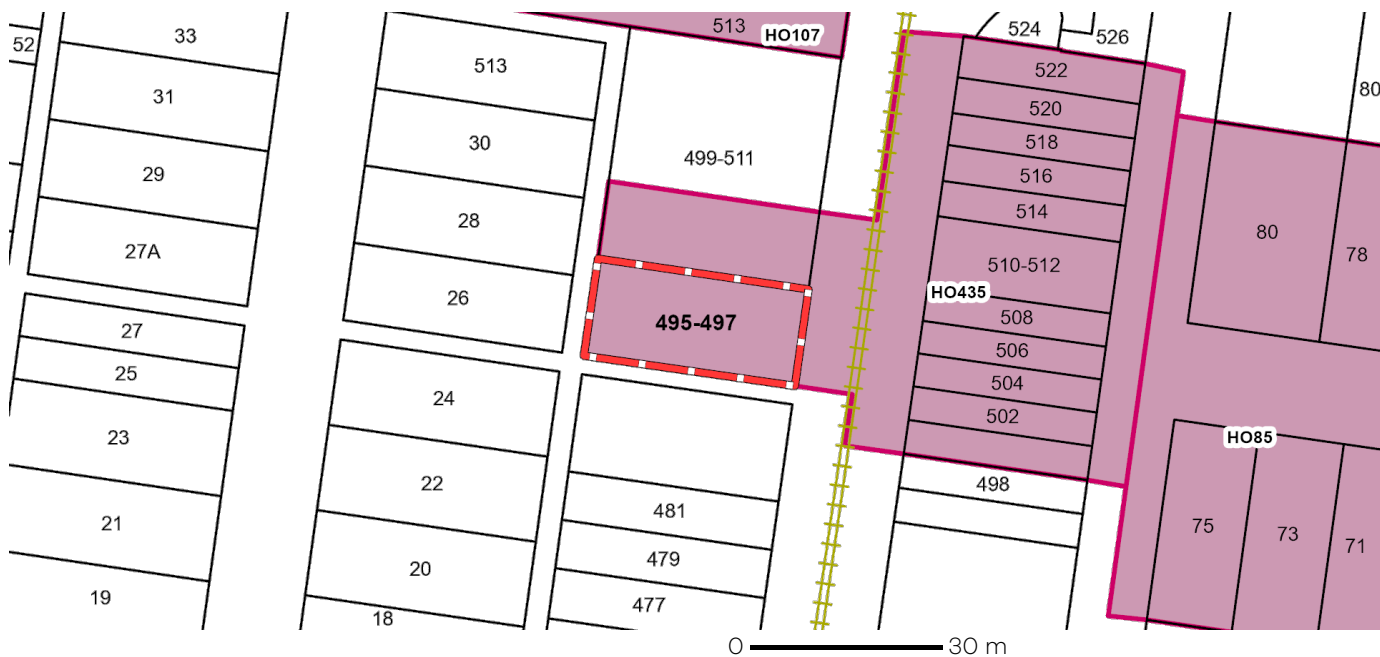
#### DESIGN AND DEVELOPMENT OVERLAY - SCHEDULE 19 (DDO19)



## Planning Overlays

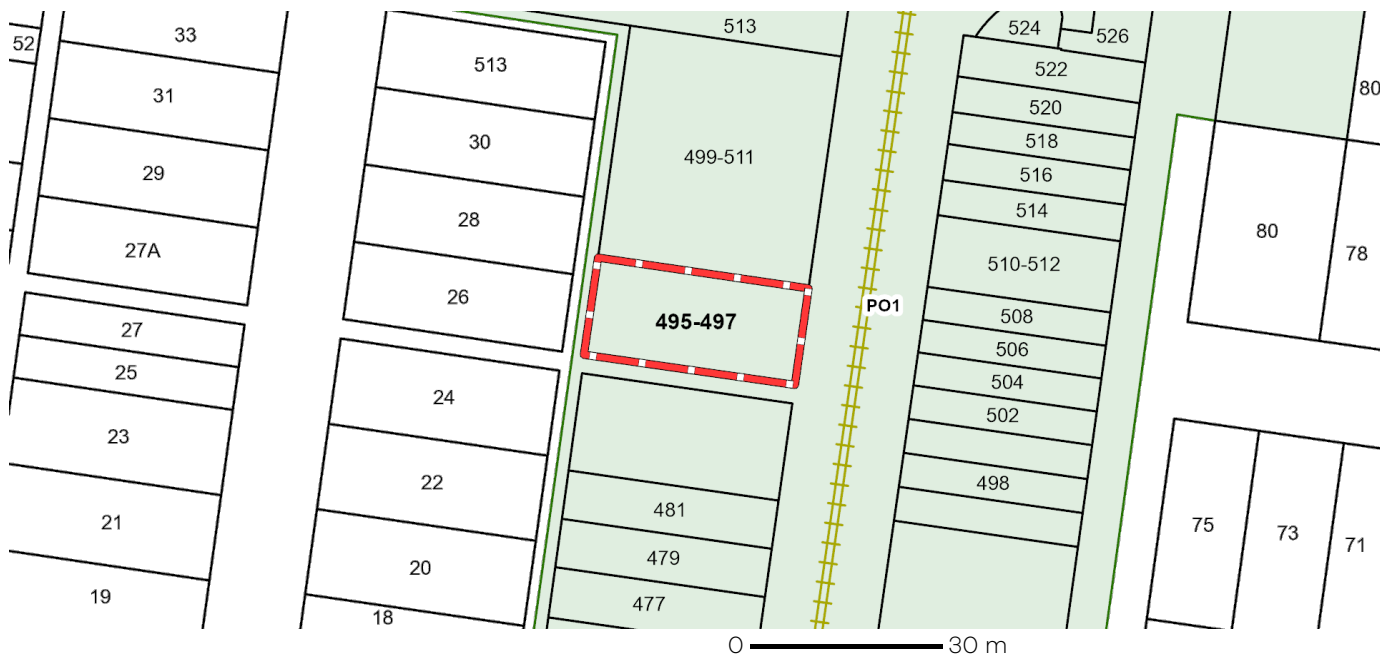
[HERITAGE OVERLAY \(HO\)](#)

[HERITAGE OVERLAY - SCHEDULE \(HO435\)](#)



[PARKING OVERLAY \(PO\)](#)

[PARKING OVERLAY - PRECINCT 1 SCHEDULE \(PO1\)](#)



## Further Planning Information

Planning scheme data last updated on 14 November 2025.

A **planning scheme** sets out policies and requirements for the use, development and protection of land. This report provides information about the zone and overlay provisions that apply to the selected land. Information about the State and local policy, particular, general and operational provisions of the local planning scheme that may affect the use of this land can be obtained by contacting the local council or by visiting <https://www.planning.vic.gov.au>

This report is NOT a **Planning Certificate** issued pursuant to Section 199 of the **Planning and Environment Act 1987**. It does not include information about exhibited planning scheme amendments, or zonings that may affect the land. To obtain a Planning Certificate go to Titles and Property Certificates at Landata - <https://www.landata.vic.gov.au>

For details of surrounding properties, use this service to get the Reports for properties of interest.

To view planning zones, overlay and heritage information in an interactive format visit <https://mapshare.vic.gov.au/vicplan/>

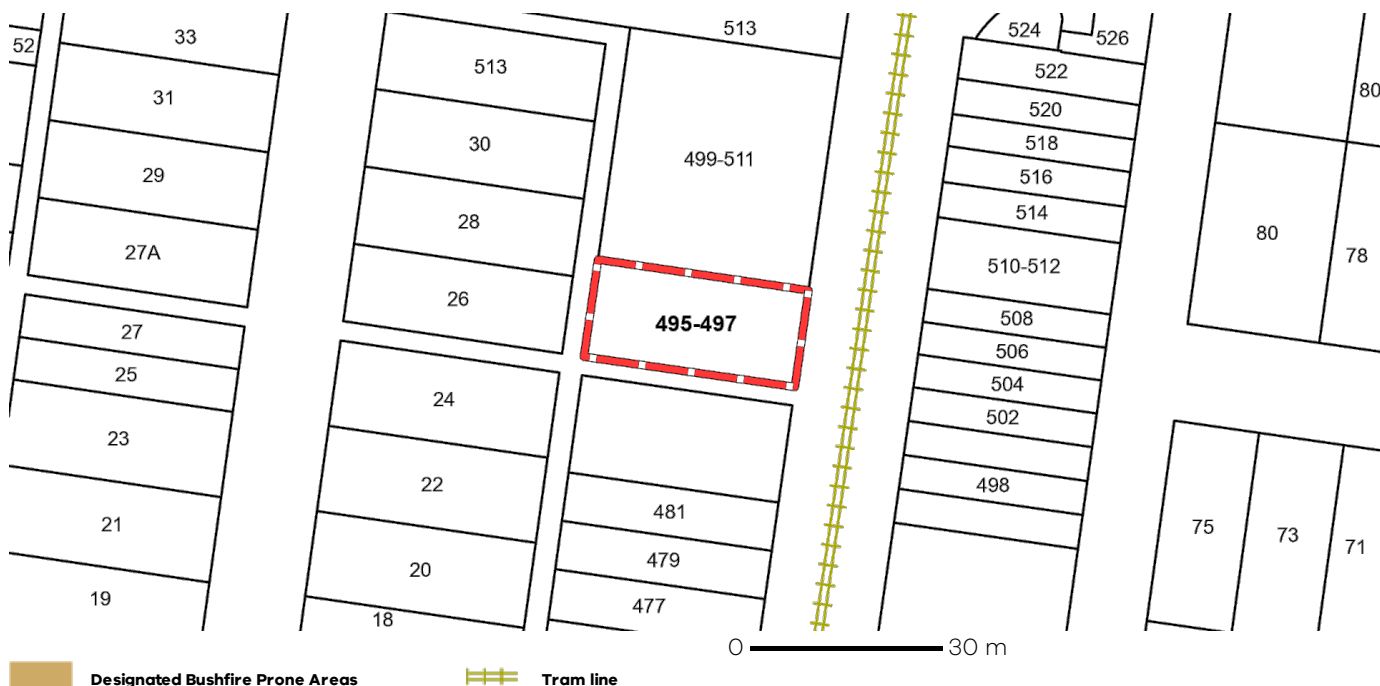
For other information about planning in Victoria visit <https://www.planning.vic.gov.au>

## Designated Bushfire Prone Areas

**This property is not in a designated bushfire prone area.**  
**No special bushfire construction requirements apply. Planning provisions may apply.**

Where part of the property is mapped as BPA, if no part of the building envelope or footprint falls within the BPA area, the BPA construction requirements do not apply.

Note: the relevant building surveyor determines the need for compliance with the bushfire construction requirements.



Designated BPA are determined by the Minister for Planning following a detailed review process. The Building Regulations 2018, through adoption of the Building Code of Australia, apply bushfire protection standards for building works in designated BPA.

Designated BPA maps can be viewed on VicPlan at <https://mapshare.vic.gov.au/vicplan/> or at the relevant local council.

Create a BPA definition plan in [VicPlan](#) to measure the BPA.

Information for lot owners building in the BPA is available at <https://www.planning.vic.gov.au>.

Further information about the building control system and building in bushfire prone areas can be found on the Victorian Building Authority website <https://www.vba.vic.gov.au>. Copies of the Building Act and Building Regulations are available from <http://www.legislation.vic.gov.au>. For Planning Scheme Provisions in bushfire areas visit <https://www.planning.vic.gov.au>.

## Native Vegetation

Native plants that are indigenous to Victoria and important for biodiversity might be present on this property. This could include trees, shrubs, herbs, grasses or aquatic plants. There are a range of regulations that may apply including need to obtain a planning permit under Clause 52.17 of the local planning scheme. For more information see [Native Vegetation \(Clause 52.17\)](#) with local variations in [Native Vegetation \(Clause 52.17\) Schedule](#)

To help identify native vegetation on this property and the application of Clause 52.17 please visit the Native Vegetation Regulations Map (NVR Map) <https://mapshare.vic.gov.au/nvr/> and [Native vegetation \(environment.vic.gov.au\)](http://nativevegetation.environment.vic.gov.au) or please contact your relevant council.

You can find out more about the natural values on your property through NatureKit [NatureKit \(environment.vic.gov.au\)](http://naturekit.environment.vic.gov.au)