

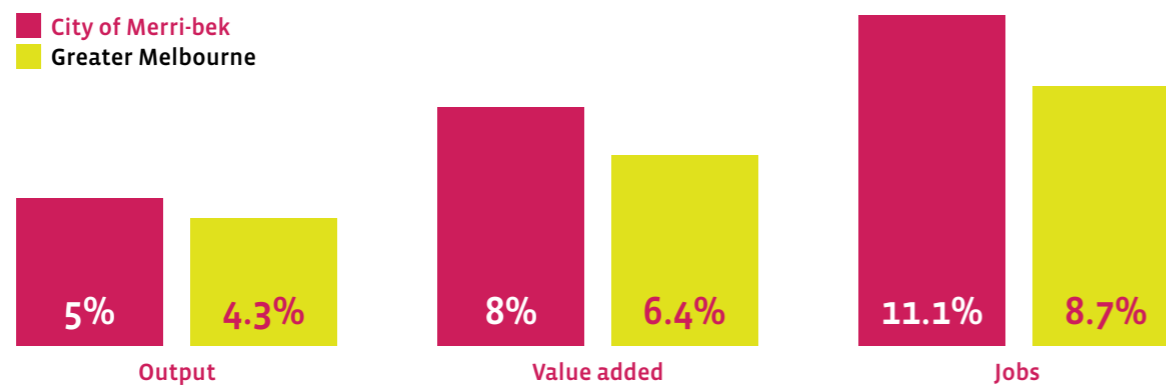
# Merri-bek's Education and Training Sector

## Merri-bek's third largest employing industry

Education and Training is one of Merri-bek's largest employing industries. The sector includes teaching occupations across all levels of learning from kindergarten to university.

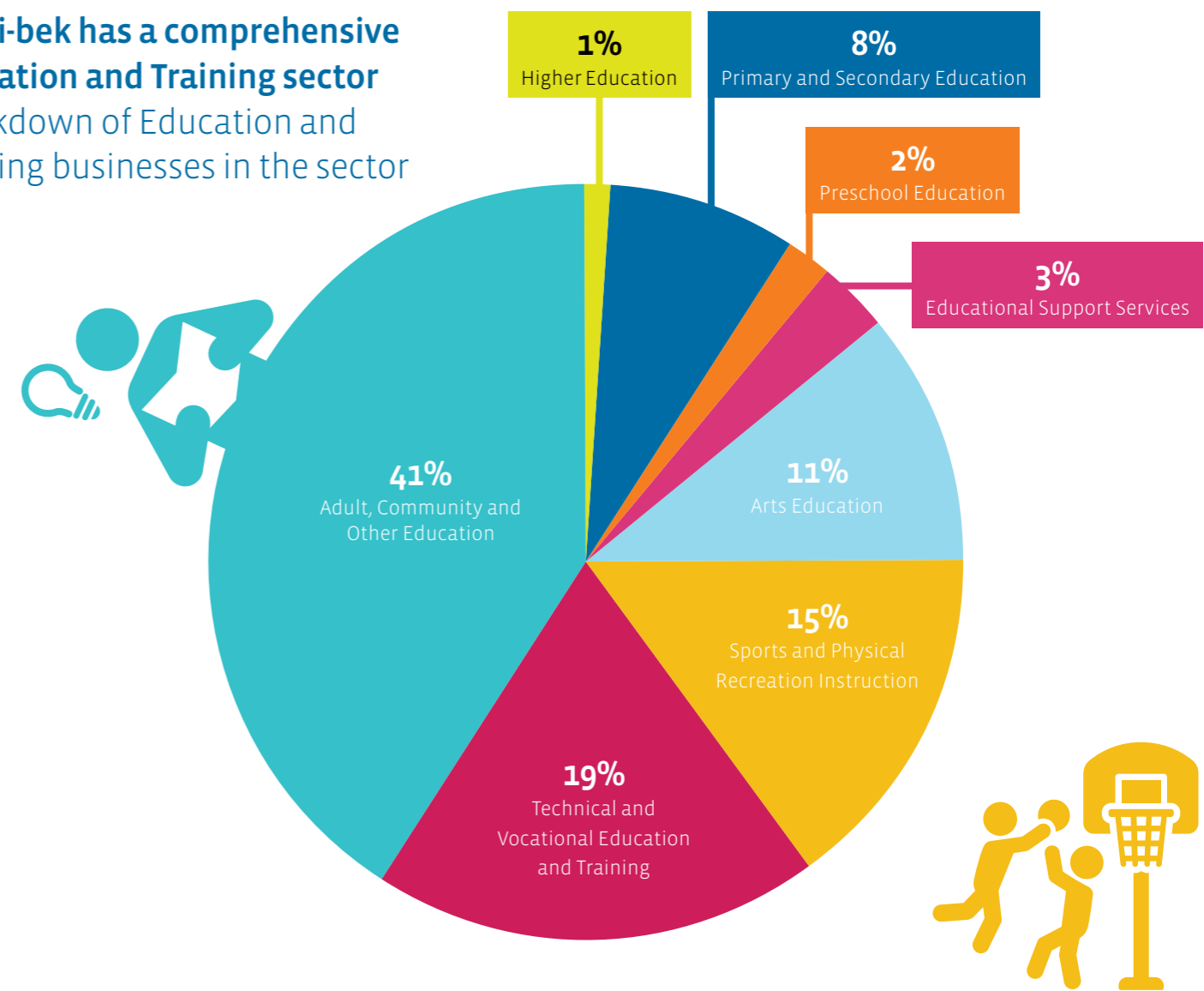


## Merri-bek has a higher concentration of Education and Training jobs than Greater Melbourne 2020/21



## Merri-bek has a comprehensive Education and Training sector

Breakdown of Education and Training businesses in the sector



"The Plumbing Industry Climate Action Centre is located close to Brunswick Station and the Sydney Road tram line which provides lots of options for our learners from all over Metro Melbourne to access our facilities for apprenticeship and professional development training in plumbing and fire protection."

**Shayne La Combre**  
CEO  
Plumbing Industry Climate Action Centre (PICAC)

## A fast growing industry for Merri-bek

Education and Training is Merri-bek's 4th fastest growing industry.

### Growth 2015/16 to 2020/21

#### Jobs



**+208**  
(0.8% p.a.)

#### Value added



**+\$10m**  
(0.6% p.a.)

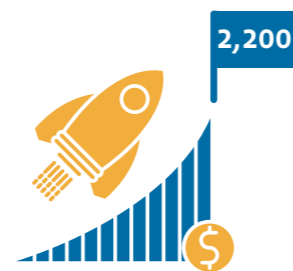
#### Output



**+9.5m**  
(0.4% p.a.)

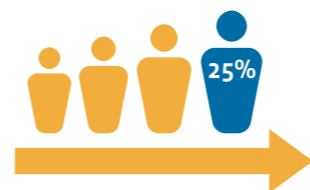
### Future Drivers of Growth

Future growth is expected to be driven by Merri-bek's strong population growth, existing teaching and university facilities and local initiatives such as the development of the Brunswick Design District. These drivers and the increase in business numbers are expected to support strong employment and output growth over the next 15 years.



#### Jobs growth

Forecast to grow by 2,200 workers



#### Population Growth

25% growth between 2020-2035



#### Established teaching facilities

RMIT University, School of Fashion and Textiles  
Plumbing Industry Climate Action Centre (PICAC)  
Australasian College of Education and Training (ACET)  
TRISON Business College



#### Investment

\$68m education building approvals over the last two years plus Brunswick Design District – a collaboration between RMIT University, Merri-bek City Council and the State Government's Creative Victoria offering educational programs, pathways to employment and opportunities for collaboration and learning.

## Profile of Education and Training jobs in Merri-bek

Education and Training workers in Merri-bek are more likely to be degree qualified and work part time when compared to Merri-bek's broader working population.

### Top 5 occupations by employment numbers



Primary and Secondary School Teachers



Education Aides



Child Carers



Private tutors



Early Childhood Teachers

### Top 5 most common qualifications



Teacher Education Primary



Teacher Education Secondary



Teacher Education Early childhood



Children's services



Business Management

#### Strengths

- Large and growing industry in Merri-bek.
- Projected strong population growth in Merri-bek and its surrounding region, particularly in the 5-17 year old age range.
- Comprehensive range of government and private educational facilities from kindergarten through to tertiary level.
- Strong tertiary and vocational education and training presence: RMIT University - Brunswick Campus, Plumbing Industry Climate Action Centre (PICAC), Australasian College of Education and Training (ACET) and TRISON Business College.
- Brunswick Design District – a collaboration between State and local governments and RMIT that is attracting interest from industry, has the key players to develop and support educational programs and pathways to employment.

#### Weaknesses

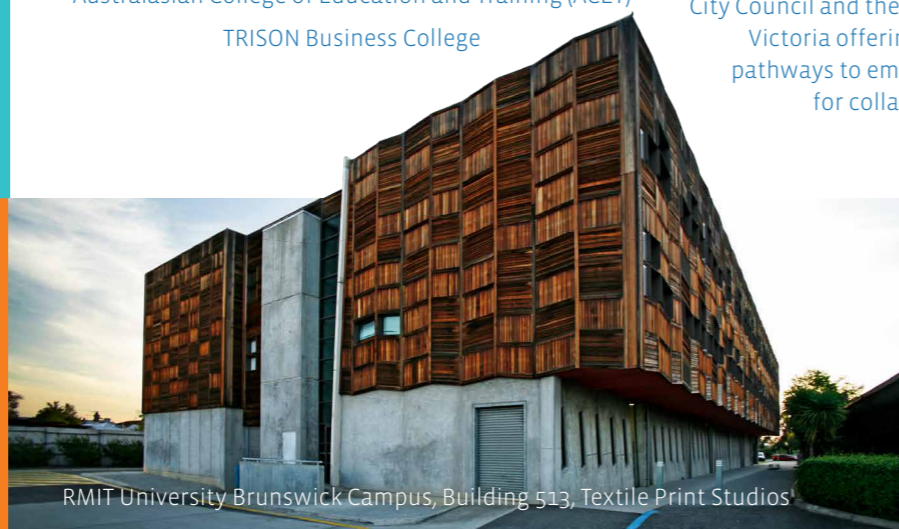
- Fall in Merri-bek's population aged 18 to 24 between 2016 and 2021.
- Young families moving out of Merri-bek due to high house prices.
- Lack of qualified teachers to fill vacancies.
- Two year gap in international student migration to Australia due to COVID mandated migration restrictions.

#### Opportunities

- Growth in federal and state government funding to TAFEs, Registered Training Organisations and Universities to promote skill development.
- Changes to secondary school VCE and VCAL to Vocational Major and Victorian Pathways Certificate by 2025, is expected to increase demand for tertiary education and apprenticeship training.
- State government funding for Three-Year-Old Kindergarten and \$10.7 million to provide up to 329 extra funded kindergarten places across Merri-bek by 2029 will increase demand for early childhood teaching skills and teachers.
- Targeted collaboration between education providers, businesses and council (eg. within the Brunswick Design District).
- Adoption of technology by education providers to enhance education delivery and practices (eg. EdTech).

#### Threats

- COVID-19 impacts on vocational education and training providers.
- Potential slow return to expected international student enrolments due to COVID19 impact on confidence, travel restrictions and costs and increased competition from other countries.
- Competition from online education providers.



RMIT University Brunswick Campus, Building 513, Textile Print Studios

“Our students and staff all benefit from being part of such a stimulating and inspiring area. Connecting with creatives, designers, makers, musicians and enterprises to build community.”

**Kiri Delly**  
Associate Director – Creative Partnerships  
College of Design & Social Context - RMIT University