

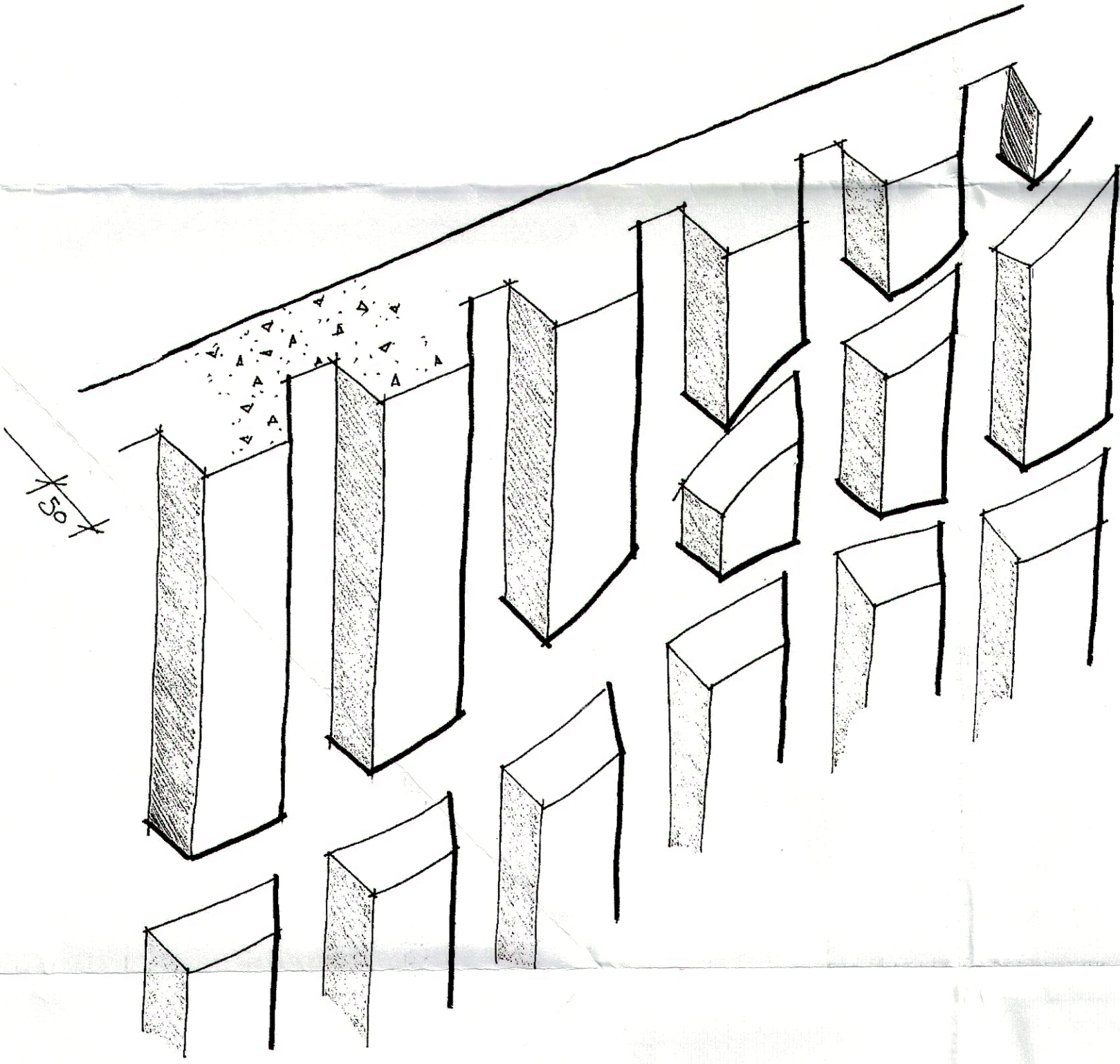
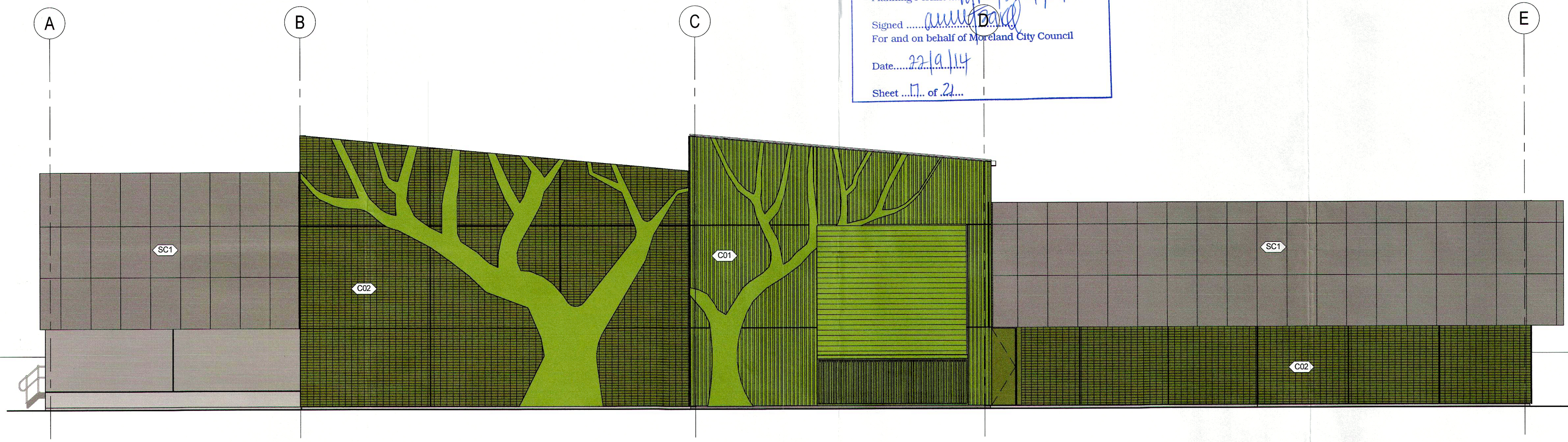
PLANNING & ENVIRONMENT ACT 1987  
MORELAND PLANNING SCHEME

This plan has been endorsed pursuant to  
Planning Permit .....  
Signed .....  
For and on behalf of Moreland City Council

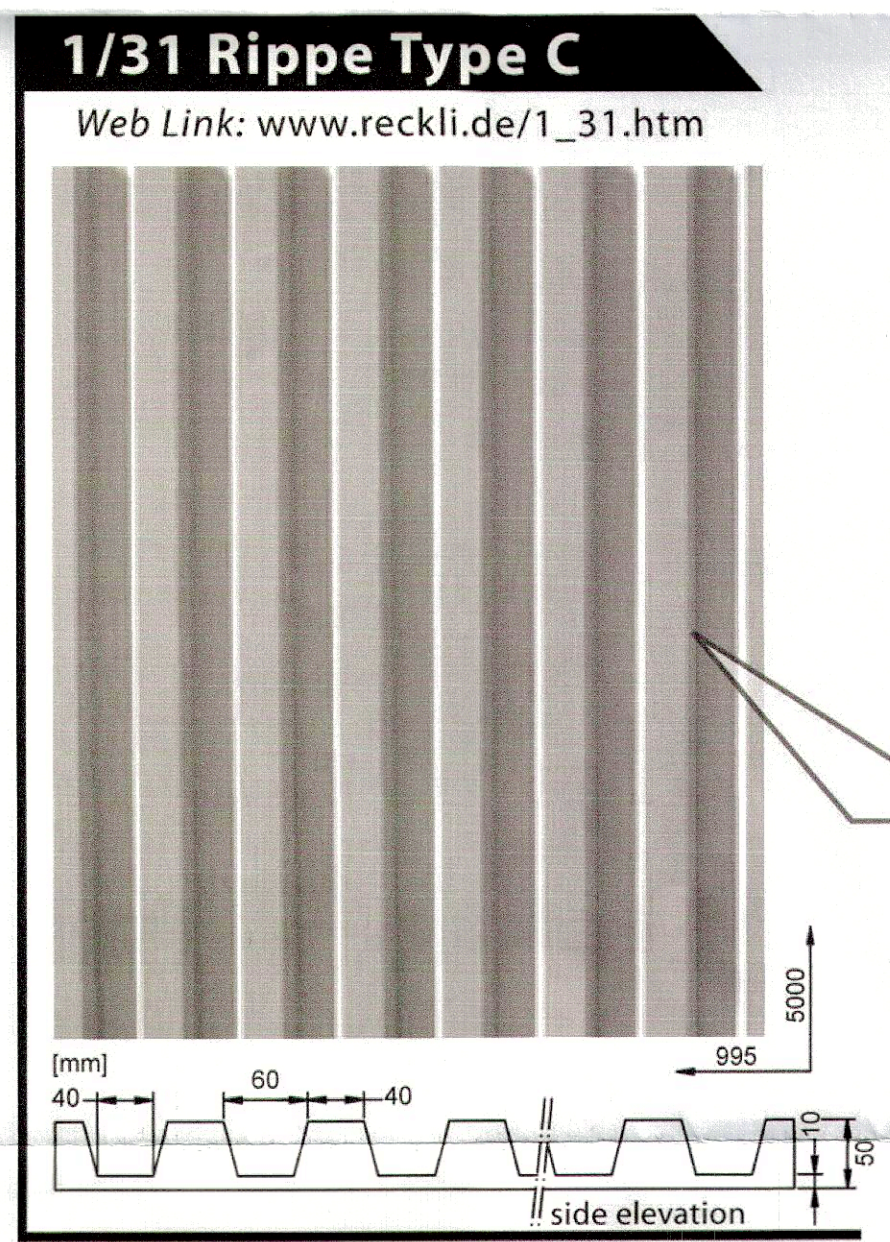
Date .....  
Sheet ..... of .....  
Date 22/9/14

MATERIALS AND FINISHES

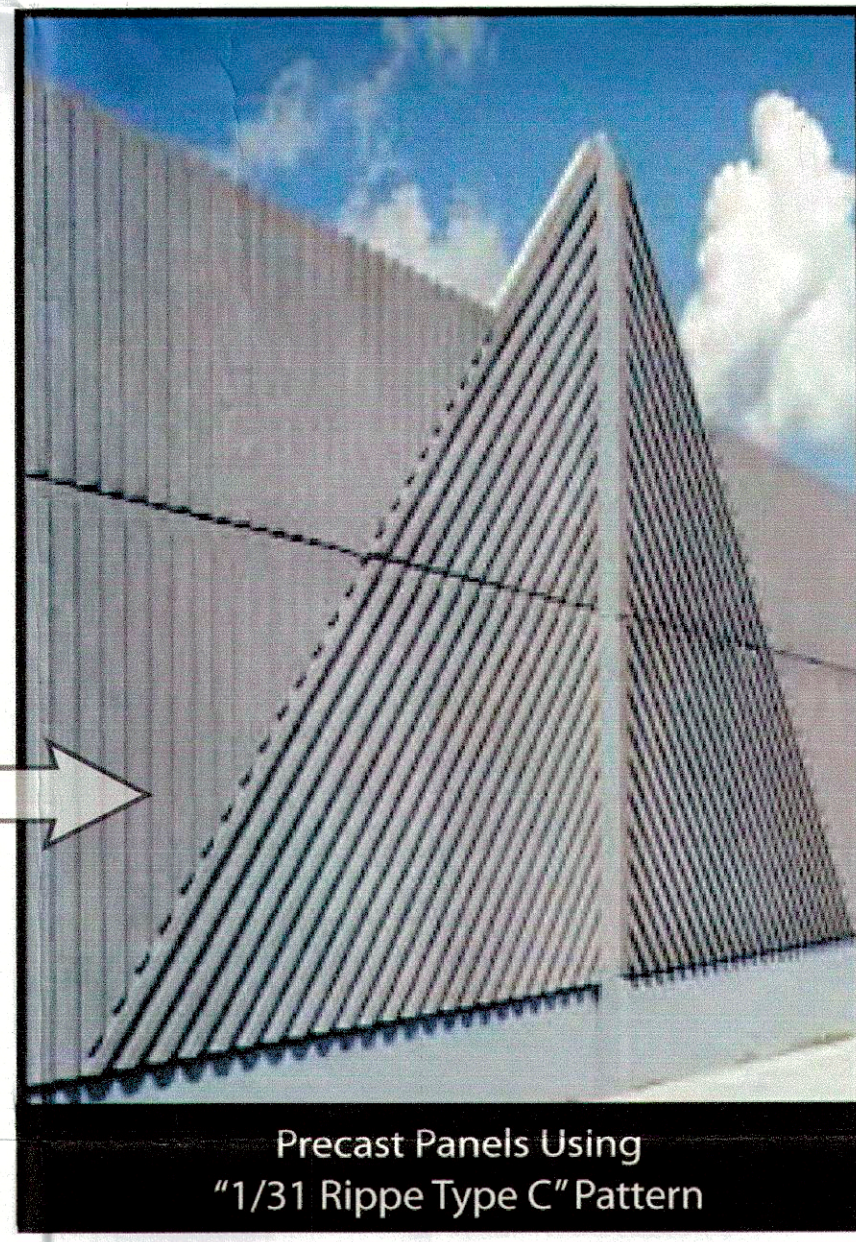
- C01 PRECAST CONCRETE PANEL WITH VERTICAL PROFILED PATTERN (RECKLI MOLD OR SIMILAR) WITH INTEGRAL LIGHT GREEN OXIDE COLOURING
- C02 PRECAST CONCRETE PANEL WITH PROFILED PATTERN (RECKLI OR SIMILAR) WITH INTEGRAL DARK GREEN OXIDE COLOURING
- C03 PRECAST CONCRETE PANEL WITH SMOOTH FINISH WITH LIGHT GREEN OXIDE COLOURING (BEHIND METAL SCREENS SC1)
- SC1 PERFORATED ALUMINIUM PANELS WITH NATURAL ANODISED FINISH AND DIGITALLY CREATED IMAGE PRODUCED FROM DIAMETER AND LOCATIONS OF PERFORATIONS, ANODISED FINISH, REFER TO MATERIALS AND FINISHES ATTACHMENT
- RS1 COLORBOND ROOFING WITH 'WILDERNESS' FINISH, GUTTERS AND CAPPING TO MATCH



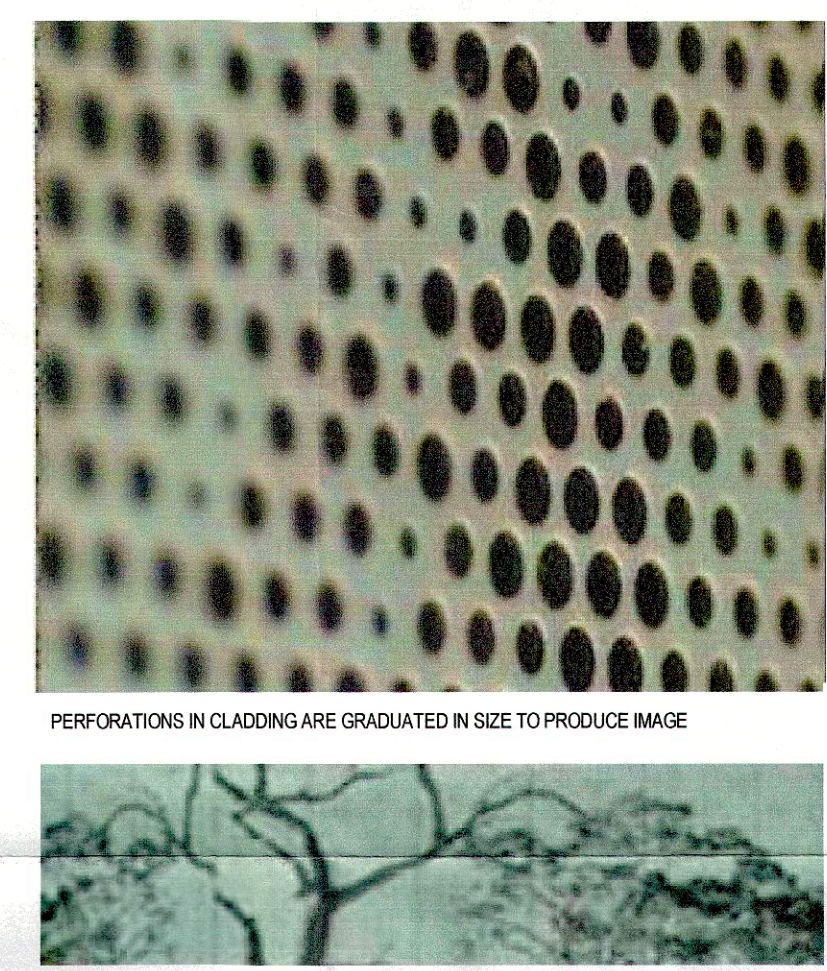
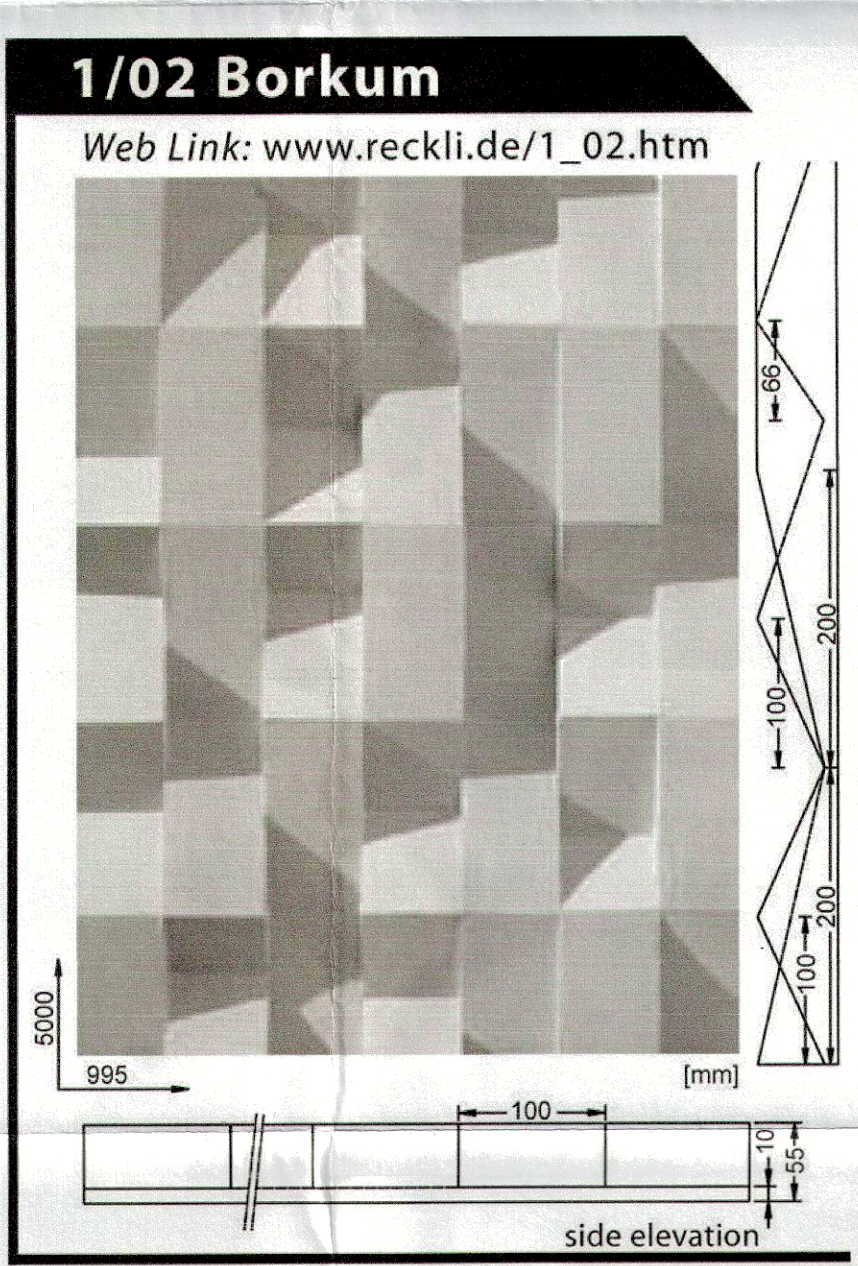
INDICATIVE SKETCH OF 'TREE' PATTERN TO PRECAST CONCRETE PANEL C01



INDICATIVE PRECAST CONCRETE PANEL



INDICATIVE PRECAST CONCRETE PANEL



PERFORATIONS IN CLADDING ARE GRADUATED IN SIZE TO PRODUCE IMAGE

SAMPLE PIC-PERF IMAGE OF LEAF

INDICATIVE PERFORATED ALUMINIUM SCREEN

REFER TO PLANNING APPLICATION DOCUMENTS FOR PERFORATED IMAGE

FOR INFORMATION  
NOT FOR CONSTRUCTION

REFERENCE DRAWINGS	REVISION	DATE	REV	DESCRIPTION	BY	CONTRACTOR	ORDER No
	12.06.13	E		ISSUED FOR INFORMATION ONLY	BECA		
	28.05.13	D		ISSUED FOR INFORMATION ONLY	BECA		
	16.12.11	C		ISSUED FOR INFORMATION ONLY	BECA		
	18.11.11	B		ISSUED FOR INFORMATION ONLY	BECA		
	25.10.11	A		ISSUED FOR INFORMATION ONLY	BECA		

BRUNSWICK TERMINAL STATION  
66kv BUILDING  
DETAILS



SPI PowerNet No

2581973-A-10