

PLANNING & ENVIRONMENT ACT 1987
MORELAND PLANNING SCHEME

This plan has been endorsed pursuant to
Planning Permit MPS/12/014/87

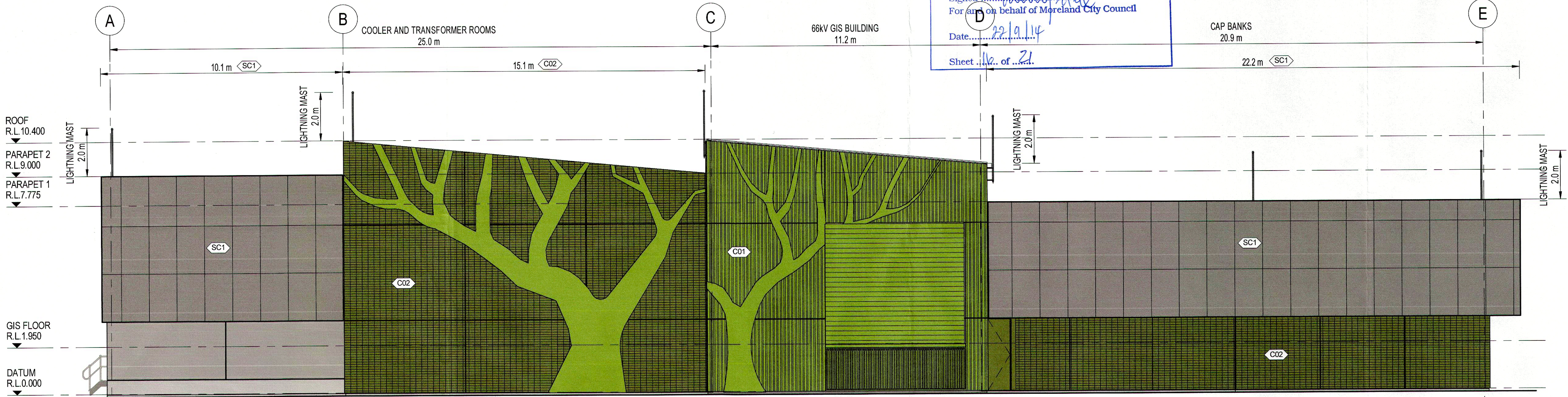
Signed [Signature]
For and on behalf of Moreland City Council

Date: 22/01/14

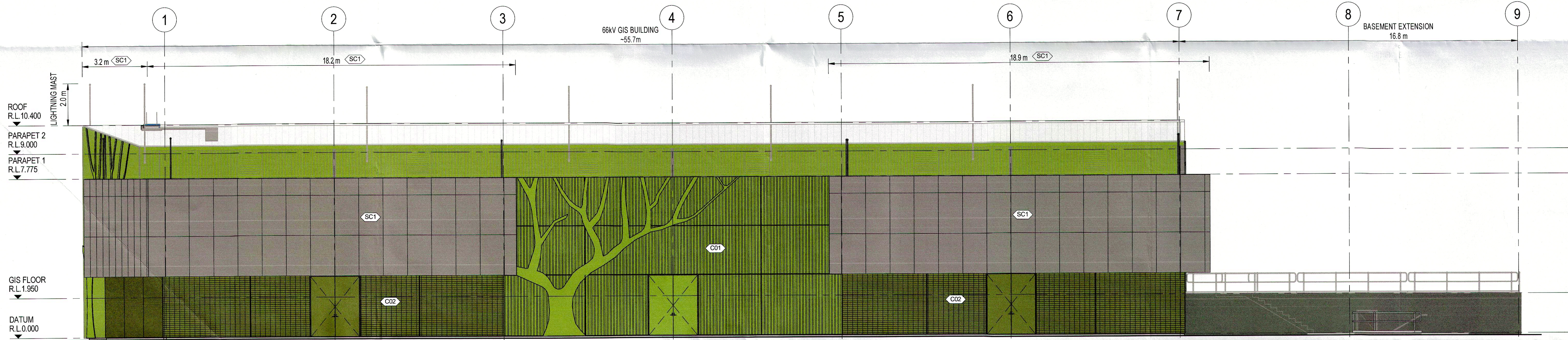
Sheet 12 of 21

MATERIALS AND FINISHES

- C01 PRECAST CONCRETE PANEL WITH VERTICAL PROFILED PATTERN (RECKLI MOLD OR SIMILAR) WITH INTEGRAL LIGHT GREEN OXIDE COLOURING
- C02 PRECAST CONCRETE PANEL WITH PROFILED PATTERN (RECKLI OR SIMILAR) WITH INTEGRAL DARK GREEN OXIDE COLOURING
- C03 PRECAST CONCRETE PANEL WITH SMOOTH FINISH WITH LIGHT GREEN OXIDE COLOURING (BEHIND METAL SCREENS SC1)
- SC1 PERFORATED ALUMINIUM PANELS WITH NATURAL ANODISED FINISH AND DIGITALLY CREATED IMAGE PRODUCED FROM DIAMETER AND LOCATIONS OF PERFORATIONS. ANODISED FINISH, REFER TO MATERIALS AND FINISHES ATTACHMENT
- RS1 COLORBOND ROOFING WITH 'WILDERNESS' FINISH. GUTTERS AND CAPPING TO MATCH



1 WEST ELEVATION
1 : 100



2 SOUTH ELEVATION
1 : 100

FOR INFORMATION
NOT FOR CONSTRUCTION

| REFERENCE DRAWINGS | REVISION | 21.03.14 H ISSUED FOR INFORMATION ONLY | | BECA DRAWN BECA | |
|--------------------|----------|--|-----|-----------------------------|------|
| | | DATE | REV | DESCRIPTION | BY |
| DRAWING TITLE | | 05.02.14 G | | ISSUED FOR INFORMATION ONLY | BECA |
| | | 12.06.13 F | | ISSUED FOR INFORMATION ONLY | BECA |
| | | 28.05.13 E | | ISSUED FOR INFORMATION ONLY | BECA |
| | | 16.12.11 D | | ISSUED FOR INFORMATION ONLY | BECA |
| | | 18.11.11 C | | ISSUED FOR INFORMATION ONLY | BECA |
| | | | | | |
| | | | | | |
| DRAWING No. | | CONTRACTOR | | ORDER No. | |

BRUNSWICK TERMINAL STATION
66kv BUILDING
ELEVATIONS - SHEET 2



SPI PowerNet No. 2581973-A-05