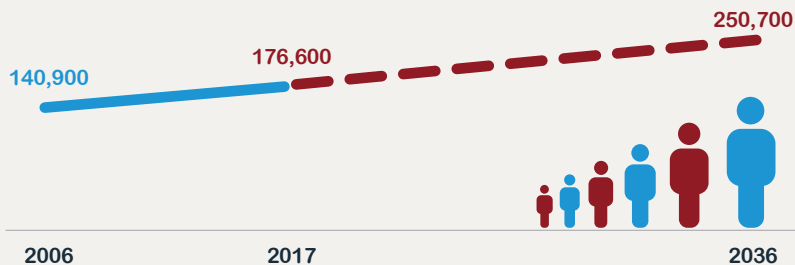


A HOME IN MORELAND

THE HOUSING WE NEED NOW AND IN THE FUTURE

OUR POPULATION IS CONTINUING TO GROW



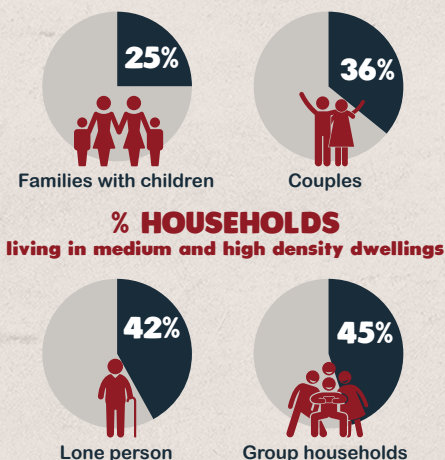
Moreland is becoming an increasingly popular place to live. Our rate of population growth is in line with Melbourne's rate of population growth.

WE NEED MORE HOMES



WE NEED MORE SMALLER HOMES

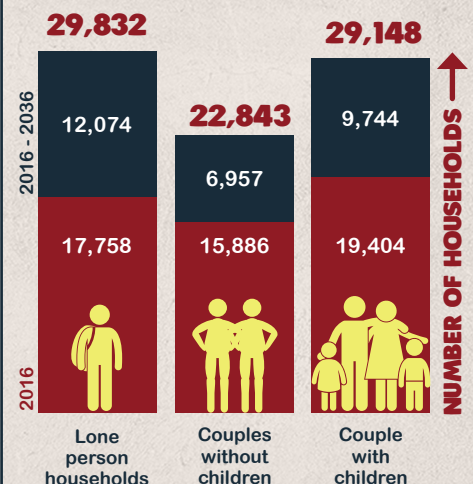
When faced with real world trade-offs between housing type and size, price and location, a significant number of us are choosing units, townhouses and apartments in Moreland.



But even with the shift to smaller households, much of our housing is geared towards the needs of larger households.

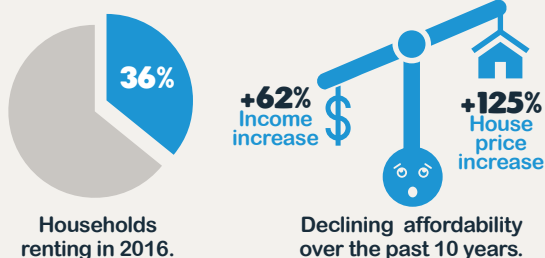


In twenty years' time there will be more of us living alone than as families with children. This will increase the demand for smaller dwellings.

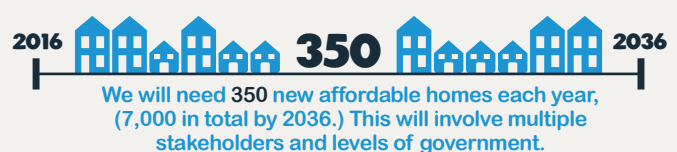


WE NEED MORE AFFORDABLE HOMES

MANY OF US ARE UNDER HOUSING COST STRESS AND MORE OF US ARE RENTING



TO MEET OUR NEED FOR AFFORDABLE HOUSING, OVER THE NEXT TWENTY YEARS



18% of new homes would need to be affordable. 80% of this need is for very low and low income households in rental stress.

