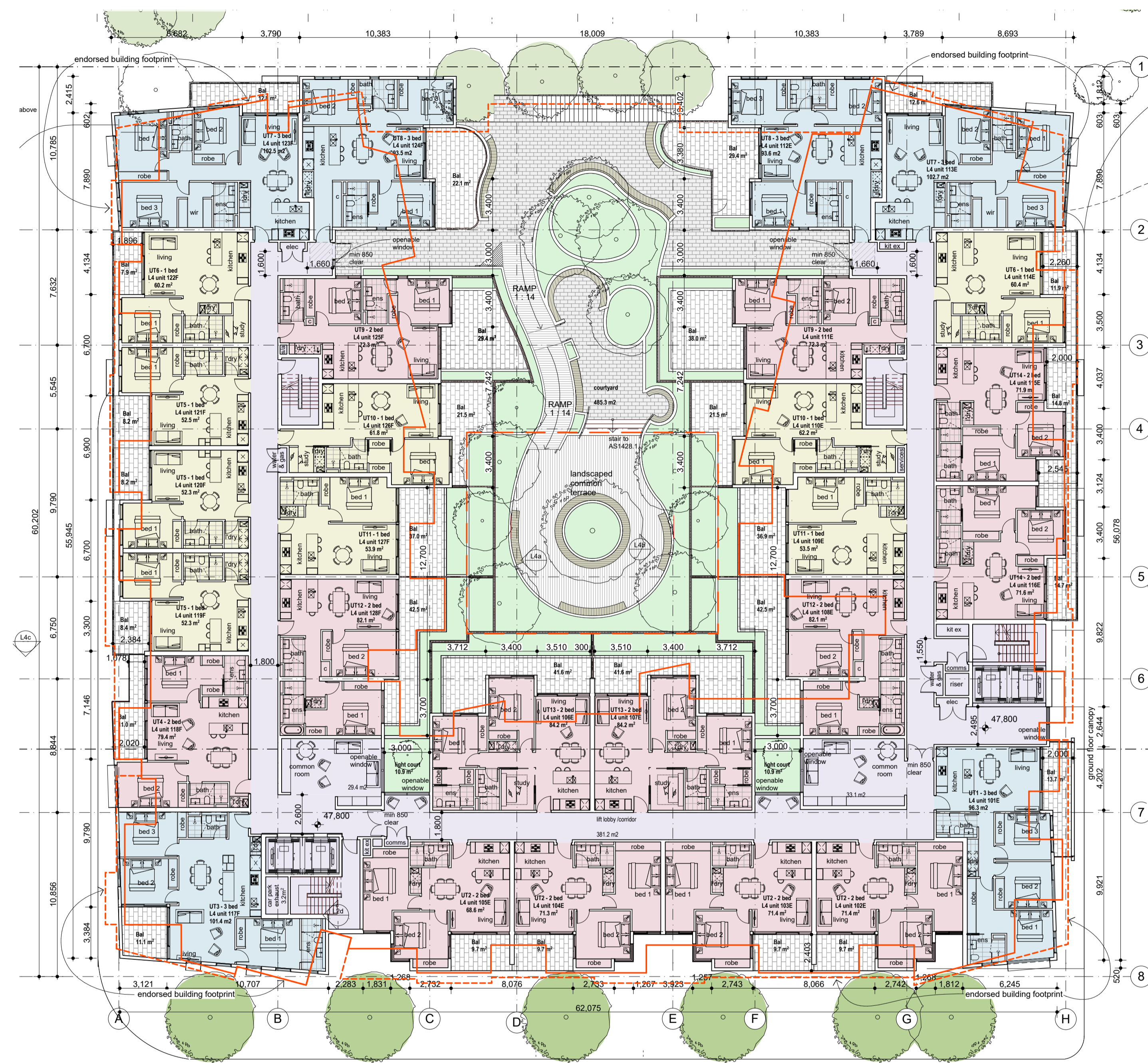


lot 4- ground floor plan  
scale 1:200

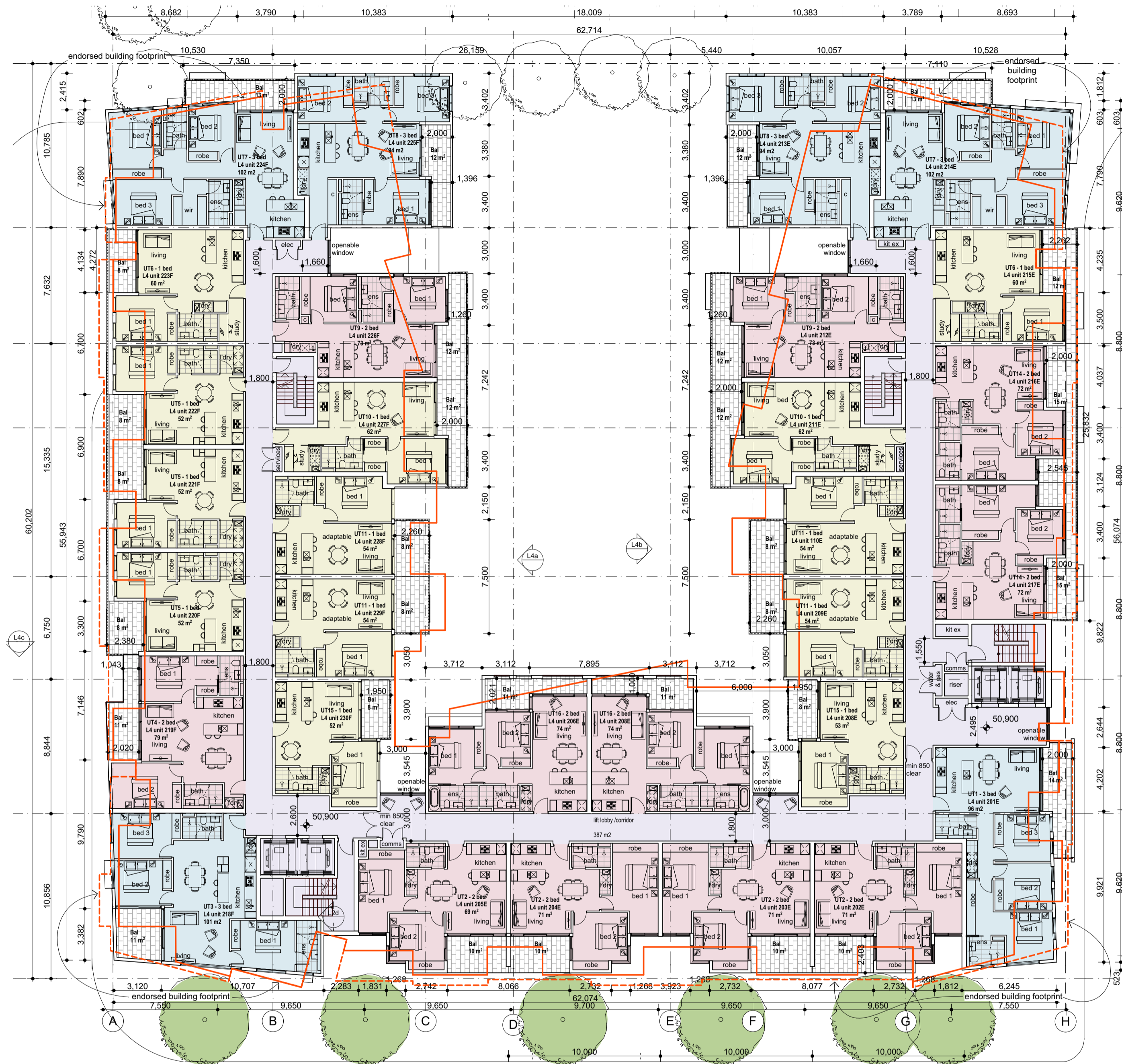


lot 4- first floor plan  
scale 1:200

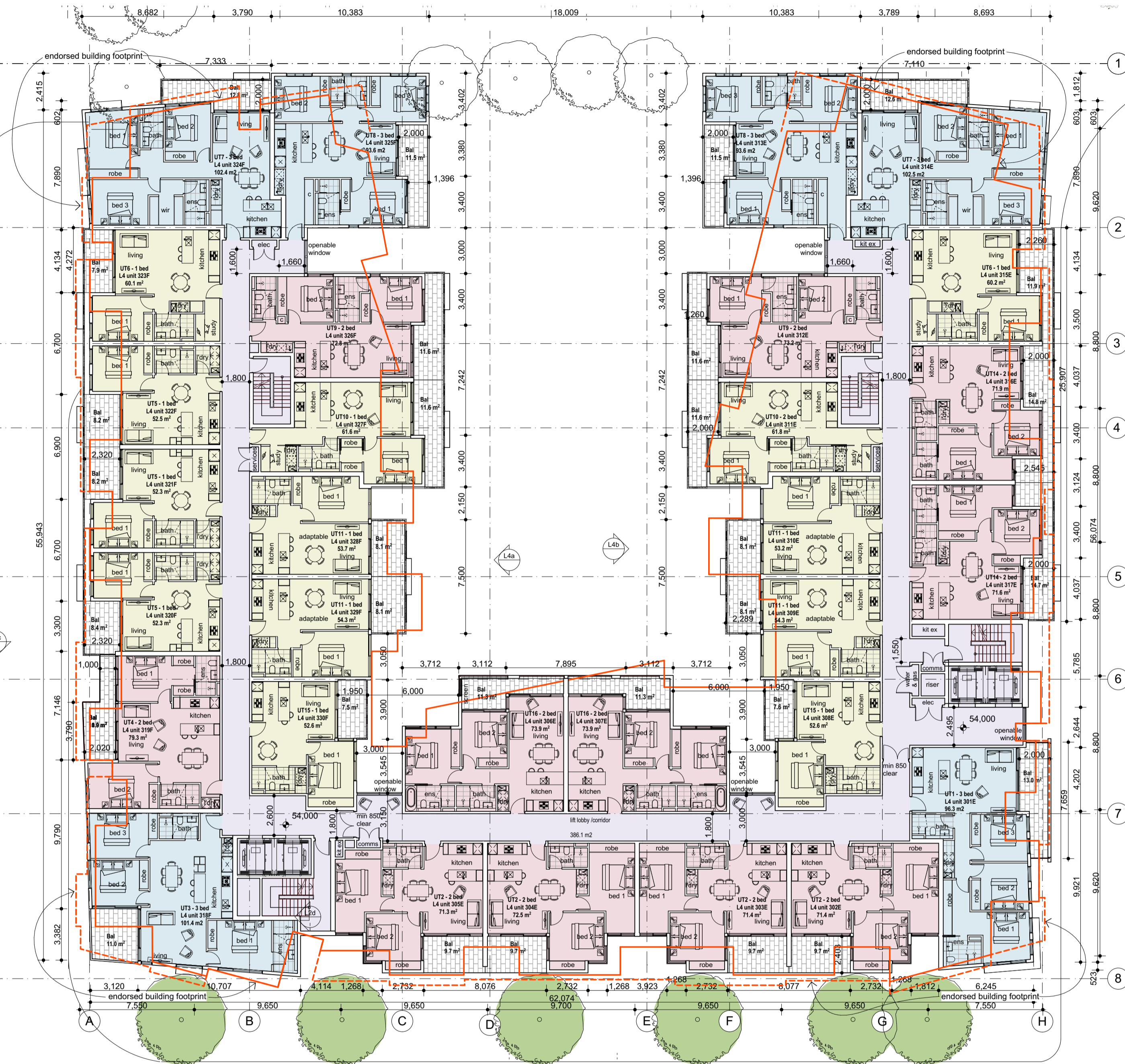
This plan has been endorsed to detail staging only and does not constitute endorsement of design details, including but not limited to, floor layouts, setbacks, road works, landscaping and open space.

**Accessibility Requirements Legend:**  
DA-01 - Warning tactile ground surface indicators to be installed in accordance with AS 1428.4.1 (2009) to all stairs, escalators, ramps, and where pedestrian access ways meet a vehicular roadway at grade.  
DA-02 - Braille and tactile indicators to be provided for all passenger lifts in accordance with AS 1735.12 (1999).  
DA-03 - External pedestrian paths of travel shall incorporate the use of contrasting surface materials to assist the orientation and mobility of people with a visual impairment.  
DA-04 - The provision of emergency evacuation chairs is proposed within fire-isolated egress stairs to assist in the evacuation of people with disabilities.  
DA-05 - Accessible lifts with rise greater than 12m dimensioned 1400mm x 1900mm.  
Refer to Condition 30 - Accessibility Report

**Acoustic Requirements Legend:**  
AC-01 - Carpark + loading bay doors + gates to be fixed only to the floor slab, quiet in operation + not rattle, to fully seal when closed and motor to be 3 phase and variable speed with slow stop and start.  
AC-02 - Loading bay doors to be solid panels and fast acting with sound insertion loss of 14 dB or more.  
AC-03 - Loading bay to be separated from neighbouring residential development to minimise structure borne sound, and to be fitted with 50mm insulation not less than 32kg/m<sup>3</sup> and perforated sheet steel facing. All trucks using loading bay to be fitted with lined band reversing beepers.  
AC-04 - Bedroom windows facing Nicholson St must use 10/126 double glazed unit glass.  
AC-05 - Mechanical plant to be vibration isolated from building structure.  
Refer to Condition 30 - Acoustic Report



lot 4- second floor plan  
scale 1:200

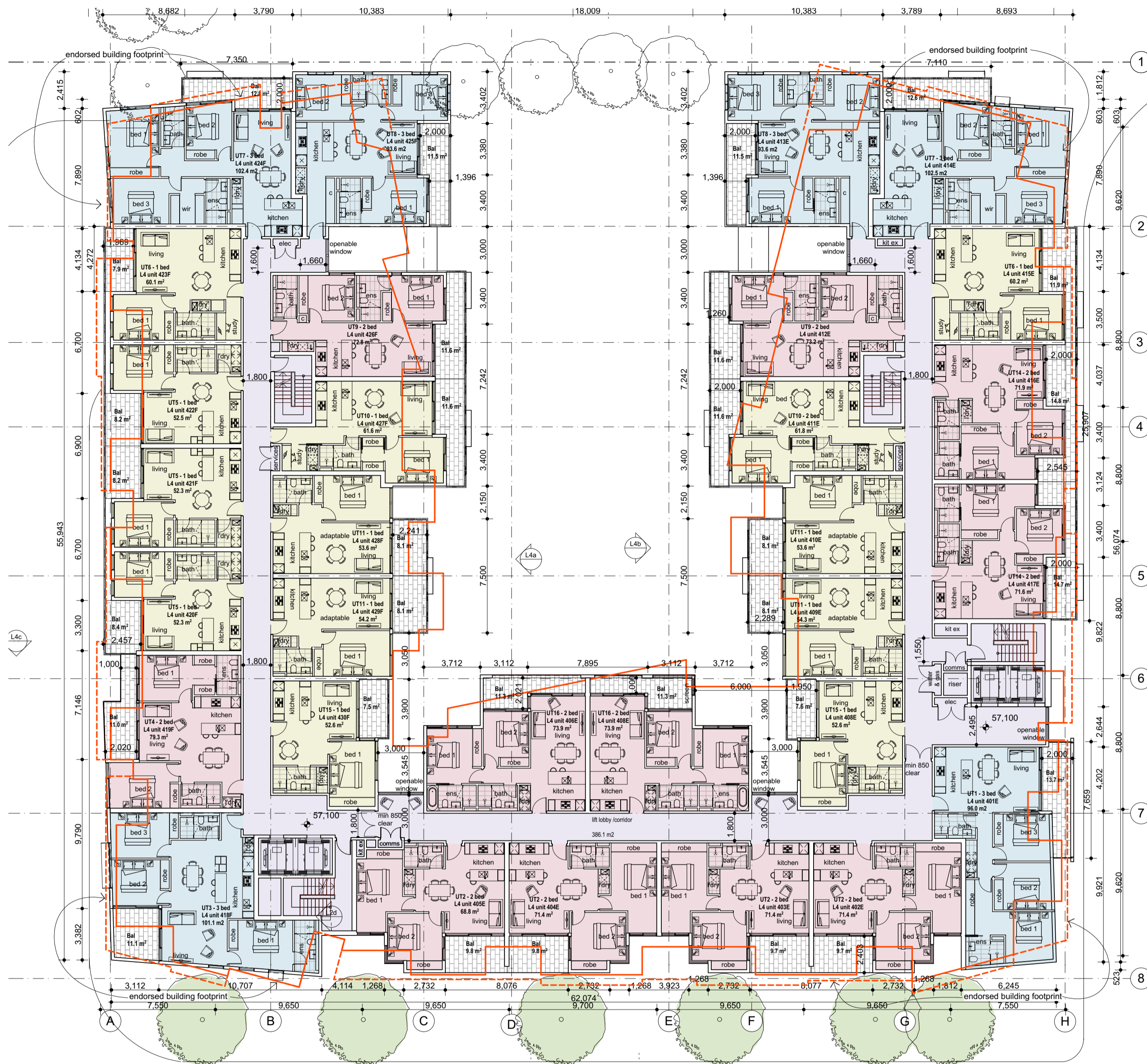


lot 4- third floor plan  
scale 1:200

**Accessibility Requirements Legend:**  
 DA-01 - Warning tactile ground surface indicators to be installed in accordance with AS 1428.4.1 (2009) to all stairs, escalators, ramps, and where pedestrian access ways meet a vehicular roadway at grade.  
 DA-02 - Braille and tactile indicators to be provided for all passenger lifts in accordance with AS 1735.12 (1999).  
 DA-03 - External pedestrian paths of travel shall incorporate the use of contrasting surface materials to assist the orientation and mobility of people with a visual impairment.  
 DA-04 - The provision of emergency evacuation chairs is proposed within fire-isolated egress stairs to assist in the evacuation of people with disabilities.  
 DA-05 - Accessible lifts with rise greater than 12m dimensioned 1400mm x 1900mm.  
 Refer to Condition 30 - Accessibility Report

**Acoustic Requirements Legend:**  
 AC-01 - Carpark - loading bay doors - gates to be fixed only to the floor slab, quiet in operation - not rattle, to fully seal when closed and motor to be 3 phase and variable speed with slow stop and start.  
 AC-02 - Loading bay doors to be solid panels and fast acting with sound insertion loss of 14 dB or more.  
 AC-03 - Loading bay to be separated from neighbouring residential development to minimise structure borne sound, and to be fitted with 50mm insulation not less than 32kg/m<sup>3</sup> and perforated sheet steel facing. All trucks using loading bay to be fitted with lined band reversing beepers.  
 AC-04 - Bedroom windows facing Nicholson St must use 101/216 double glazed unit glass.  
 AC-05 - Mechanical plant to be vibration isolated from building structure.  
 Refer to Condition 8 - Acoustic Report

This plan has been endorsed to detail staging only and does not constitute endorsement of design details, including but not limited to, floor layouts, setbacks, road works, landscaping and open space.



lot 4- fourth floor plan  
scale 1:200



lot 4- fifth floor plan  
scale 1:200

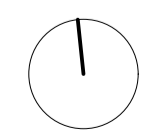
This plan has been endorsed to detail staging only and does not constitute endorsement of design details, including but not limited to, floor layouts, setbacks, road works, landscaping and open space.

**Accessibility Requirements Legend:**  
DA-01 - Warning tactile ground surface indicators to be installed in accordance with AS 1428.4.1 (2009) to all stairs, escalators, ramps, and where pedestrian access ways meet a vehicular roadway at grade.  
DA-02 - Braille and tactile indicators to be provided for all passenger lifts in accordance with AS 1735.12 (1999).  
DA-03 - External pedestrian paths of travel shall incorporate the use of contrasting surface materials to assist the orientation and mobility of people with a visual impairment.  
DA-04 - The provision of emergency evacuation chairs is proposed within fire-isolated egress stairs to assist in the evacuation of people with disabilities.  
DA-05 - Accessible lifts with rise greater than 12m dimensioned 1400mm x 1900mm.  
Refer to Condition 30 - Accessibility Report

**Acoustic Requirements Legend:**  
AC-01 - Carpark - loading bay doors + gates to be fixed only to the floor slab, quiet in operation + not rattle, to fully seal when closed and motor to be 3 phase and variable speed with slow stop and start.  
AC-02 - Loading bay doors to be solid panels and fast acting with sound insertion loss of 14 dB or more.  
AC-03 - Loading bay to be separated from neighbouring residential development to minimise structure borne sound, and to be fitted with 50mm insulation not less than 32kg/m<sup>3</sup> and perforated sheet steel facing. All trucks using loading bay to be fitted with lined band reversing beepers.  
AC-04 - Bedroom windows facing Nicholson St must use 101/26 double glazed unit glass.  
AC-05 - Mechanical plant to be vibration isolated from building structure.  
Refer to Condition 8 - Acoustic Report



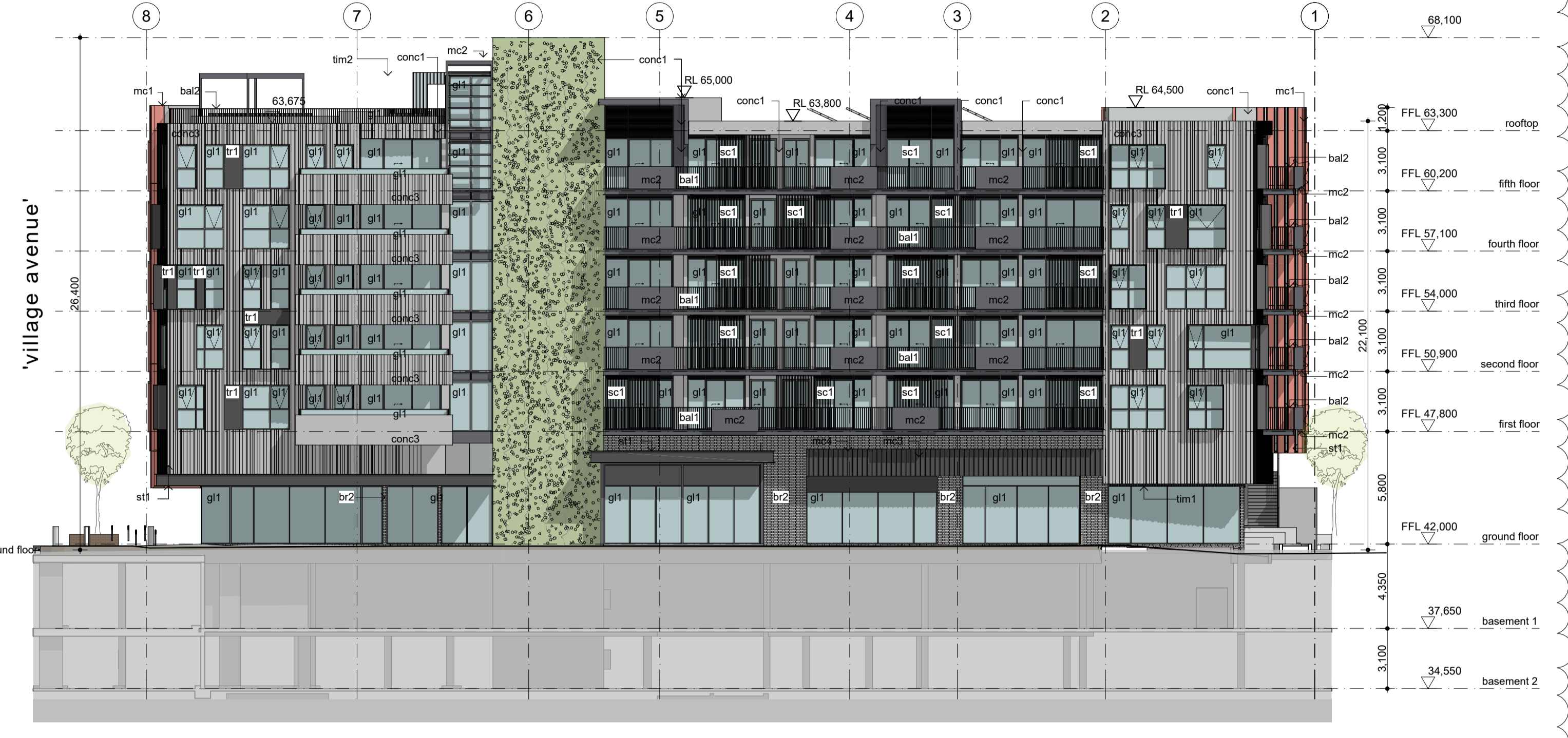
lot 4- roof plan  
scale 1:200



FINISHES LEGEND	
LOT 3	
b1	TEXTURE RENDER TYPE 1 - DULUX DOMNO
b2	TEXTURE RENDER TYPE 2 - WHISPER WHITE
conc1	RIBBED NATURAL CONCRETE FINISH
conc2	NATURAL CONCRETE FINISH
br1	BRICK CLADDING TYPE 1
mc1	METAL FINISH - CHARCOAL
st1	STEEL FINISH TYPE 1
g1	CLEAR DOUBLE GLAZING IN METAL FRAME TYPE 1
g2	CLEAR GLAZING IN BLACKOUT TIMBER FRAME
bal1	OPAQUE GLAZED BALUSTRADE
bal2	OPEN METAL BALUSTRADE - CHARCOAL
bal3	FLAT SHEET METAL BALUSTRADE - CHARCOAL
LOT 4	
conc1	NATURAL CONCRETE FINISH
conc2	FLUTED CONCRETE OXIDE FINISH
conc3	RIBBED CONCRETE NATURAL FINISH
tr1	TEXTURE RENDER TYPE 1 - DULUX DOMNO
tr2	TEXTURE RENDER TYPE 2
br1	BRICK CLADDING TYPE 1
br2	BRICK CLADDING TYPE 2
tim1	WHITE CYPRESS OR SIMILAR
tim2	TIMBER BATTEN TYPE 1
mc1	METAL CLADDING TYPE 1 - RED
mc2	OMG TIMBER OR SIMILAR
mc3	METAL CLADDING TYPE 2 - CHARCOAL
mc4	METAL CLADDING TYPE 3 - COPPER
mc5	STANDING SEAM CLADDING TYPE 4 - CHARCOAL
st1	METAL CLADDING TYPE 5 - LIGHT GRAY OR SIMILAR
st2	STEEL TYPE 1 - CHARCOAL
g1	CLEAR GLAZING IN METAL FRAME TYPE 1
g2	OPAQUE GLAZING IN METAL FRAME TYPE 2
g3	OPAQUE GLAZING IN METAL FRAME TYPE 3
bal1	METAL BALUSTRADE - HANDRAILS & DULUX CHARCOAL POWDERCOAT
bal2	METAL BALUSTRADE - HANDRAILS & DULUX TYPE 2 - RED
bal3	GLASS BALUSTRADE
bal4	METAL BALUSTRADE - HANDRAILS & DULUX LIGHT GRAY OR SIMILAR
LOT 9	
tr1	TEXTURE RENDER TYPE 1
tr2	TEXTURE RENDER TYPE 2
tim1	TIMBER CLADDING TYPE 1
g1	CLEAR DOUBLE GLAZING IN METAL FRAME TYPE 1
g2	TRANSLUCENT DOUBLE GLAZING IN METAL FRAME TYPE 2
bal1	GLAZED BALUSTRADE
LOT 10	
tr1	TEXTURE RENDER TYPE 1
tr2	TEXTURE RENDER TYPE 2
tim1	TIMBER CLADDING TYPE 1
g1	CLEAR DOUBLE GLAZING IN METAL FRAME TYPE 1
g2	TRANSLUCENT DOUBLE GLAZING IN METAL FRAME TYPE 2
bal1	GLAZED BALUSTRADE
bal2	METAL BALUSTRADE
mc1	METAL CLADDING TYPE 1
general	
scr1	VERTICAL METAL SCREEN
scr2	VERTICAL METAL PRIVACY SCREEN IN METAL FRAME, MAX. 20% OPENING
scr3	HORIZONTAL METAL SCREEN
scr4	1700 HIGH VERTICAL METAL BATTEN PRIVACY SCREEN IN METAL FRAME, MAX. 20% PERFORATION
scr5	1700 HIGH WHITE OPAQUE GLAZING PRIVACY SCREEN IN METAL FRAME
scr7	1700 HIGH METAL BATTEN SCREEN, MIN. 40% TRANSPARENCY
planter	MASONRY PLANTER
seat	FIXED STEEL FRAMED TIMBER BENCH SEAT
par1	EXT. PAVING TYPE 1
par2	EXT. PAVING TYPE 3
par3	EXT. PAVING TYPE 2
par4	EXT. PAVING TYPE 4
par5	EXT. PAVING TYPE 5
roof-1	COLORBOND METAL DECK ROOF IN 'SURFMET', MIN SRI 82



lot 4- north elevation  
scale 1:200



lot 4 - east elevation  
scale 1:200



lot 4- south elevation  
scale 1:200



lot 4- west elevation  
scale 1:200

