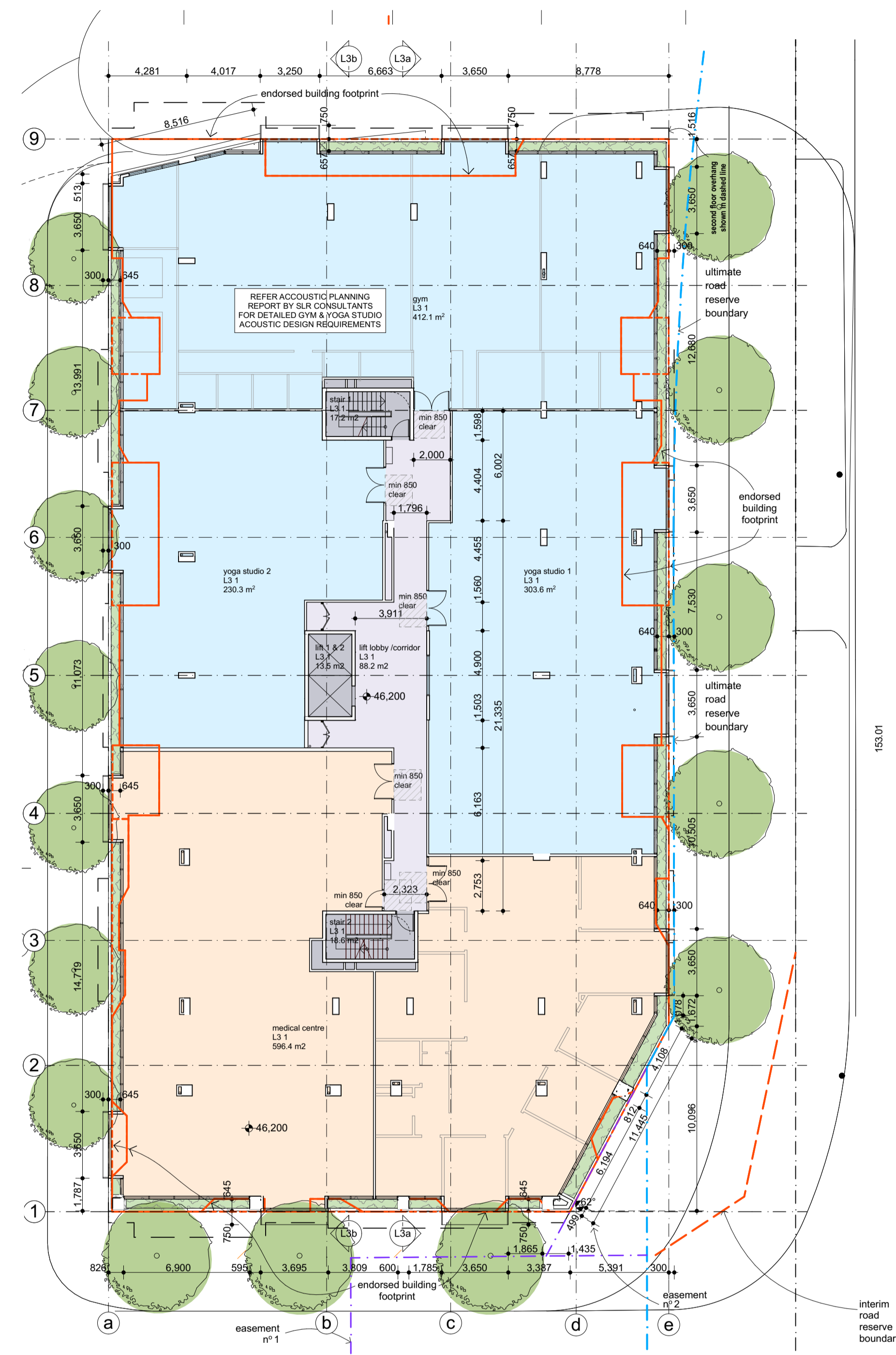
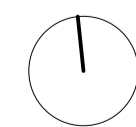


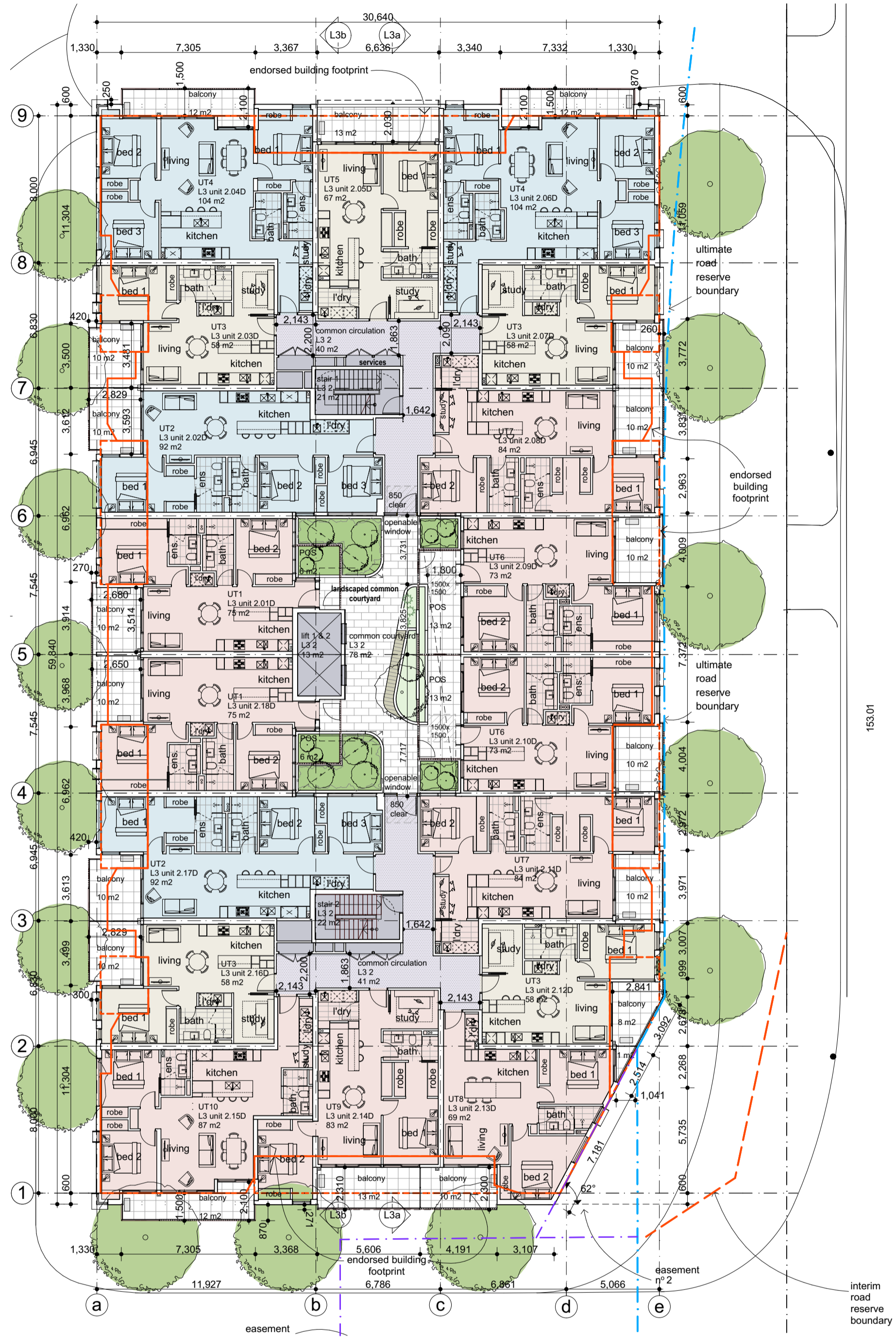
lot 3- ground floor plan
scale 1:200



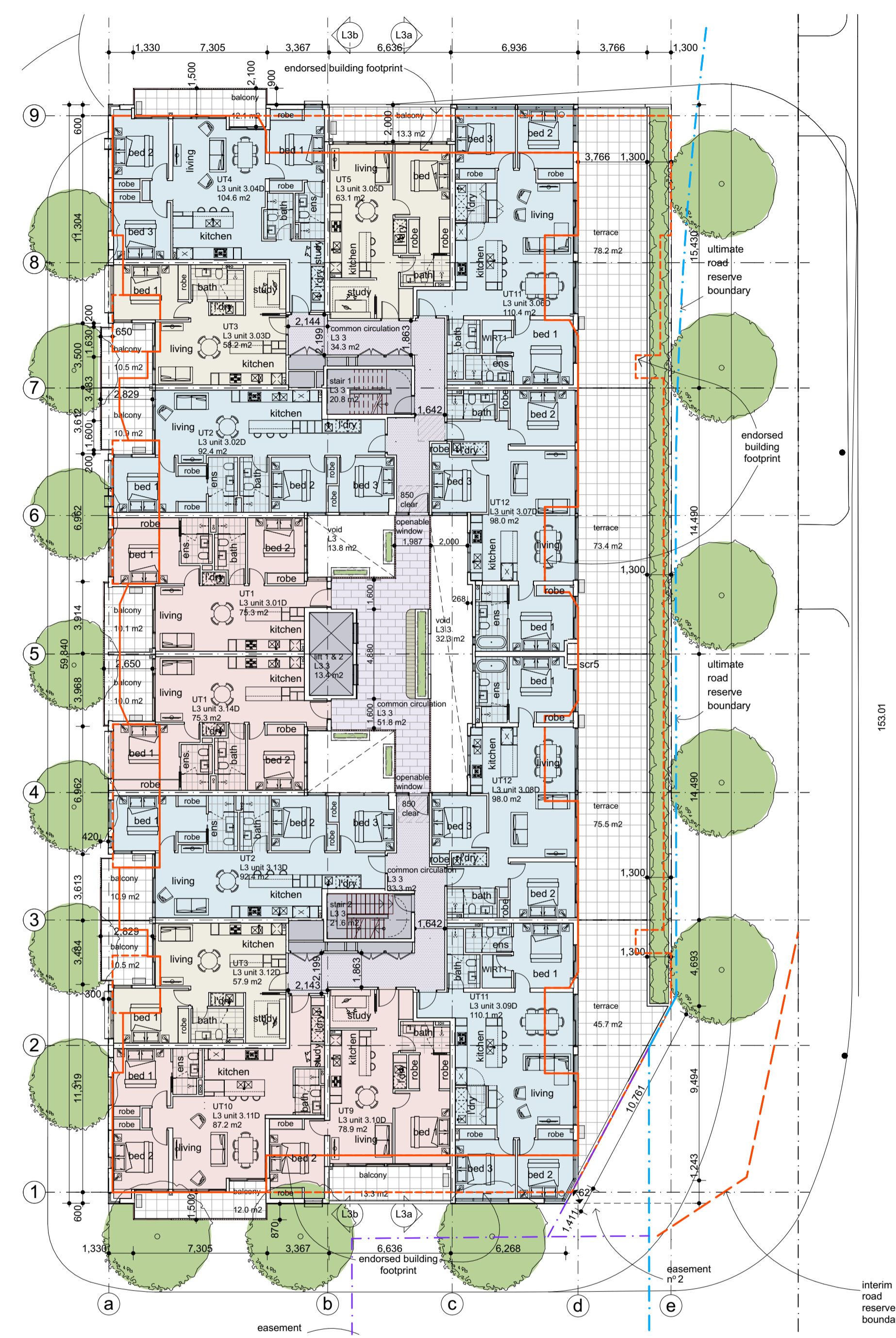
lot 3- first floor plan
scale 1:200



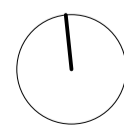
This plan has been endorsed to detail staging only and does not constitute endorsement of design details, including but not limited to, floor layouts, setbacks, road works, landscaping and open space.



lot 3- second floor plan
scale 1:200



lot 3- third floor plan
scale 1:200



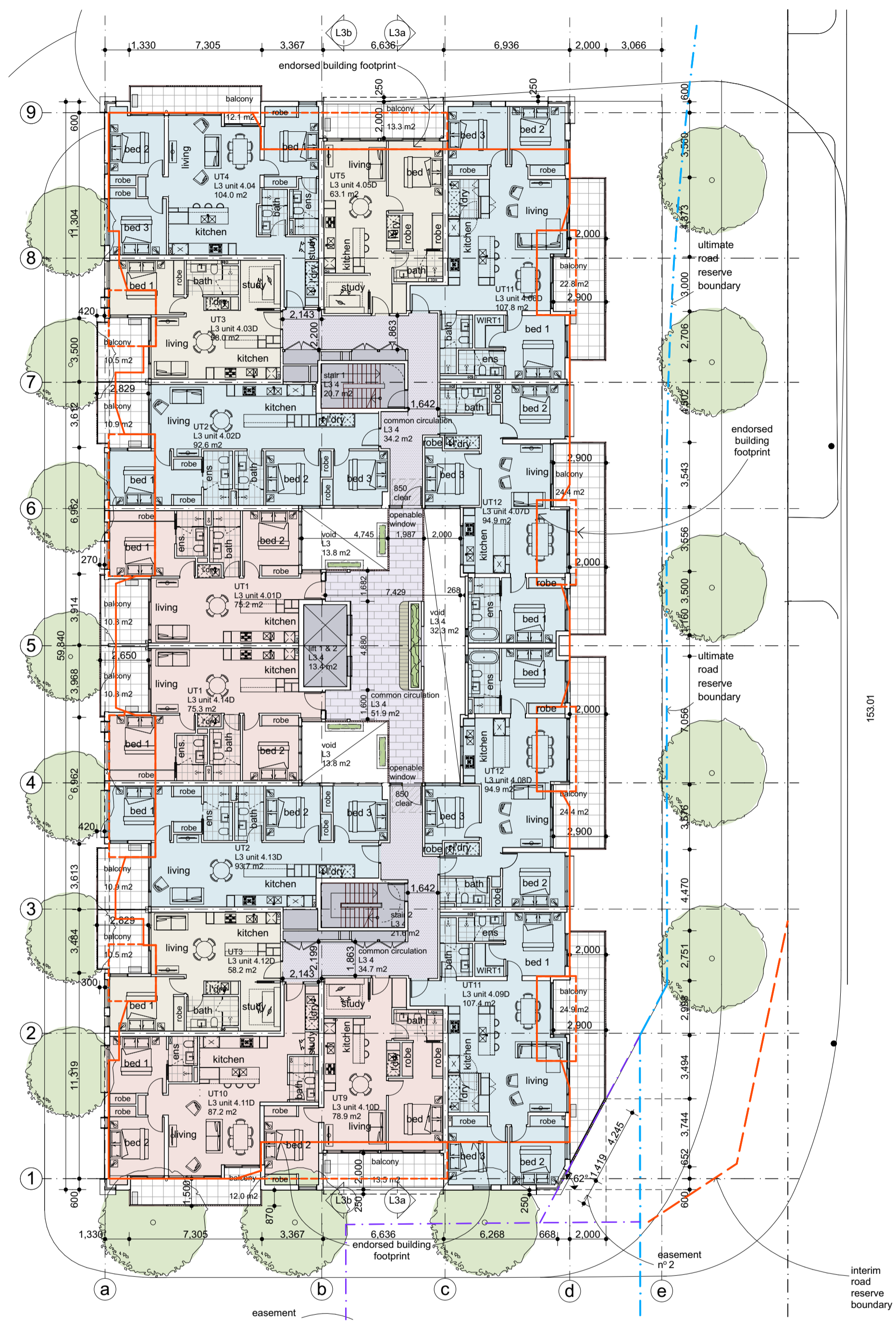
This plan has been endorsed to detail staging only and does not constitute endorsement of design details, including but not limited to, floor layouts, setbacks, road works, landscaping and open space.

Accessibility Requirements Legend:
 DA-01 - Warning tactile ground surface indicators to be installed in accordance with AS 1429.4.1 (2009) to all stairs, escalators, ramps, and where pedestrian access ways meet a vehicular roadway at grade.
 DA-02 - Braille and tactile indicators to be provided to all passenger lifts in accordance with AS 1735.12 (1999).
 DA-03 - External pedestrian paths of travel shall incorporate the use of contrasting surface materials to assist the orientation and mobility of people with a visual impairment.
 DA-04 - The provision of emergency evacuation chairs is proposed within fire-isolated egress stairs to assist in the evacuation of people with disabilities.
 DA-05 - Accessible lifts with rise greater than 12m dimensioned 1400mm x 1600mm

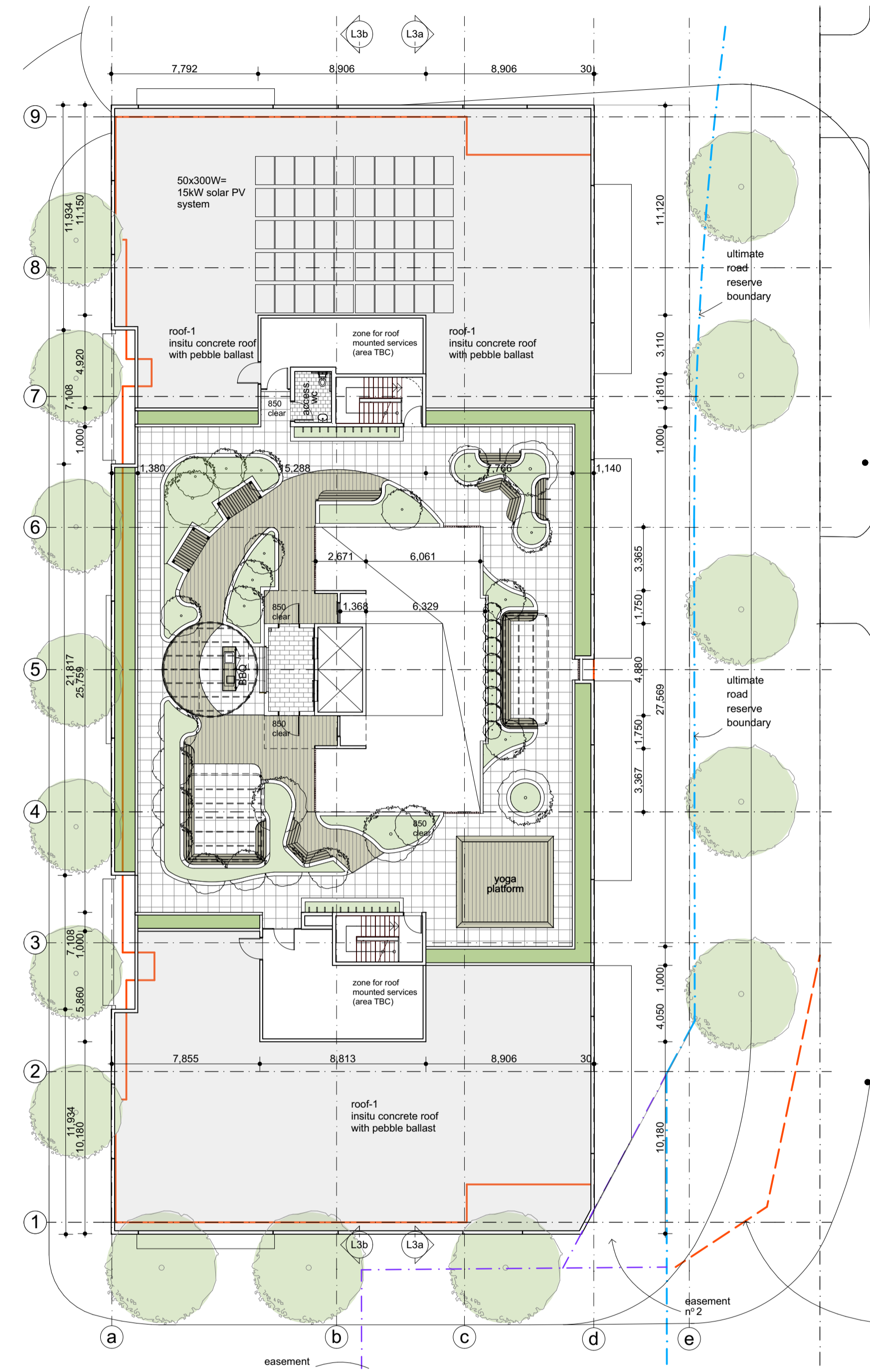
Acoustic Requirements Legend:
 AC-01 - Carpark - loading bay doors - gates to be fixed only to the floor slab, quiet in operation - not rattle, to fully seal when closed and motor to be 3 phase and variable speed with slow stop and start.
 AC-02 - Loading bay doors to be solid panels and fast acting with sound insertion loss of 14 dB or more.
 AC-03 - Loading bay to be separated from neighbouring residential development to minimise structure borne sound, and to be fitted with 50mm insulation not less than 30kg/m³ and perforated sheet steel facing. All trucks using loading bay to be fitted with load bars reversing beams.
 AC-04 - Bedroom windows facing Nicholson St must use 1012i6 double glazed unit glass.
 AC-05 - Mechanical plant to be vibration isolated from building structure.

Refer to Condition 30 - Accessibility Report

Refer to Condition 8 - Acoustic Report



lot 3- 4th floor plan
scale 1:200



lot 3- roof plan (5th level)
scale 1:200



This plan has been endorsed to detail staging only and does not constitute endorsement of design details, including but not limited to, floor layouts, setbacks, road works, landscaping and open space.

Accessibility Requirements Legend:
 DA-01 - Warning tactile ground surface indicators to be installed in accordance with AS 1428.4.1 (2009) to all stairs, escalators, ramps, and where pedestrian access ways meet a vehicular roadway at grade.
 DA-02 - Braille and tactile indicators to be provided to all passenger lifts in accordance with AS 1735.12 (1999).
 DA-03 - External pedestrian paths of travel shall incorporate the use of contrasting surface materials to assist the orientation and mobility of people with a visual impairment.
 DA-04 - The provision of emergency evacuation chairs is proposed within fire-isolated egress stairs to assist in the evacuation of people with disabilities.
 DA-05 - Accessible lifts with rise greater than 12m dimensioned 1400mm x 1900mm.
 Refer to Condition 30 - Accessibility Report

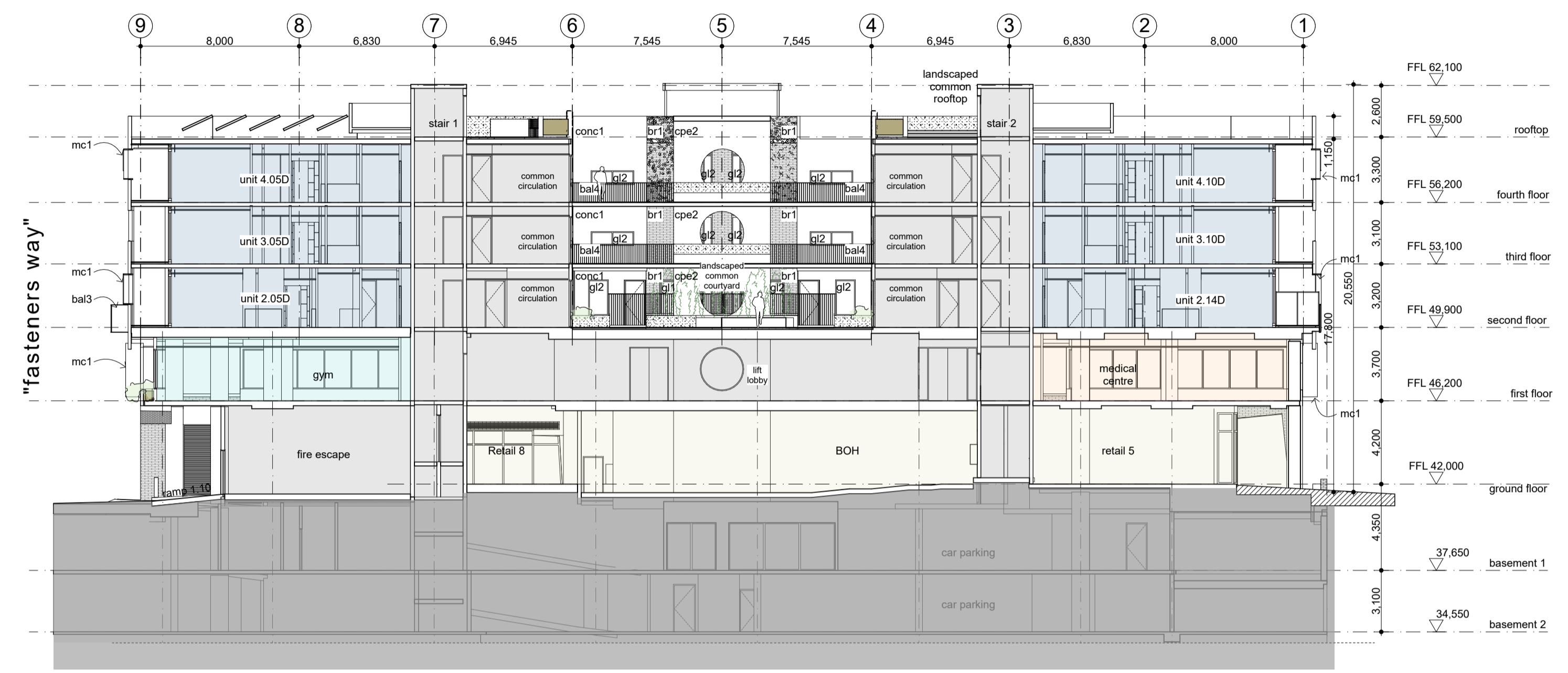
Acoustic Requirements Legend:
 AC-01 - Carpark - loading bay doors + gates to be fixed only to the floor slab, quiet in operation + not rattle, to fully seal when closed and motor to be 3 phase and variable speed with slow stop and start.
 AC-02 - Loading bay doors to be solid panels and fast acting with sound insertion loss of 14 dB or more.
 AC-03 - Loading bay to be separated from neighbouring residential development to minimise structure borne sound, and to be fitted with 50mm insulation not less than 32kg/m³ and perforated sheet steel facing. All trucks using loading bay to be fitted with lined hand reversing beepers.
 AC-04 - Bedroom windows facing Nicholson St must use 101/26 double glazed unit glass.
 AC-05 - Mechanical plant to be vibration isolated from building structure.
 Refer to Condition 8 - Acoustic Report

FINISHES LEGEND

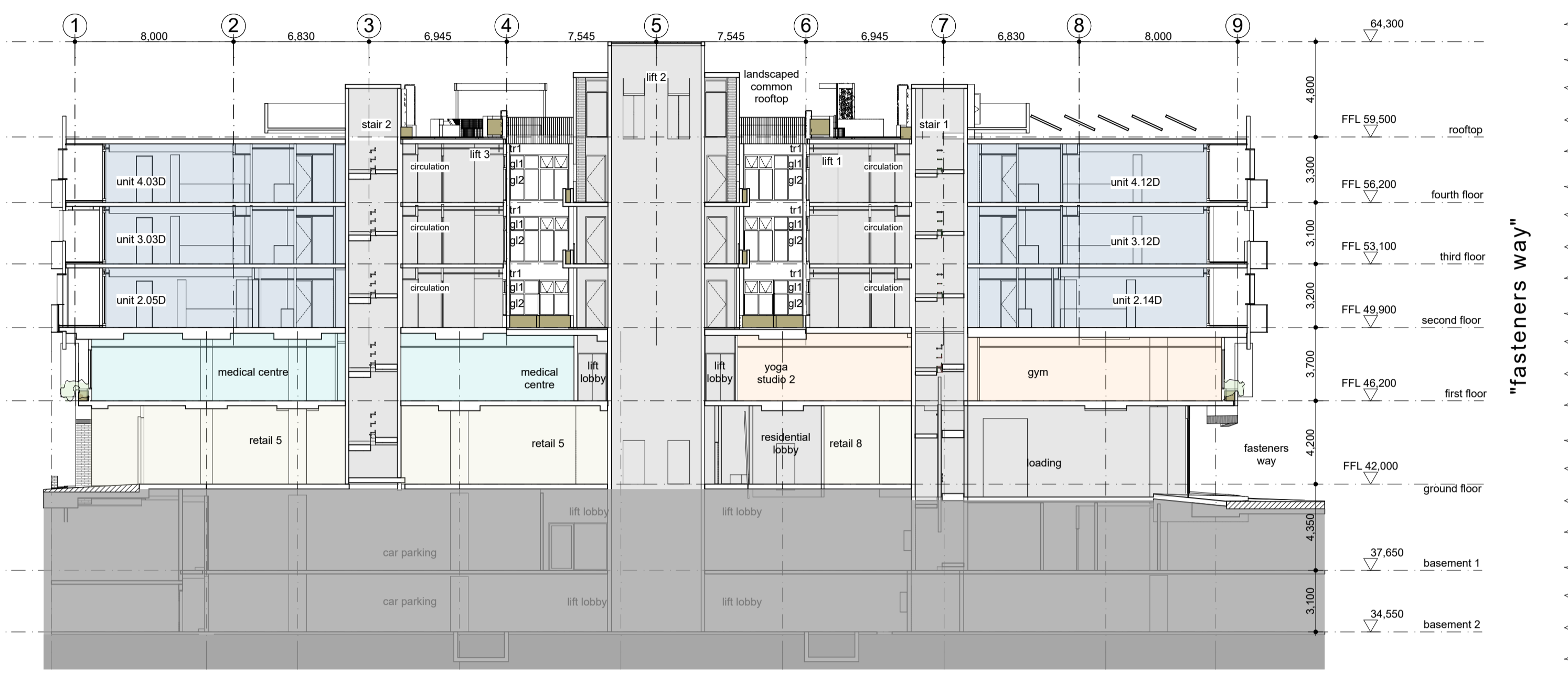
LOT 3	LOT 4
b1 TEXTURE RENDER TYPE 1 - DULUX DOMINO	con1 NATURAL CONCRETE FINISH
b2 TEXTURE RENDER TYPE 2 - WHISPER WHITE	con2 FLUTED CONCRETE OXIDE FINISH
con1 RIBBED NATURAL CONCRETE FINISH	con3 RIBBED CONCRETE NATURAL FINISH
con2 NATURAL CONCRETE FINISH	b1 TEXTURE RENDER TYPE 1 - DULUX DOMINO
b1 BRICK CLADDING TYPE 1	b2 BRICK CLADDING TYPE 2
mc1 METAL FINISH - CHARCOAL	b3 BRICK CLADDING TYPE 3
st1 TIMBER FINISH TYPE 1	b4 BRICK CLADDING TYPE 4
g1 CLEAR DOUBLE GLAZING IN METAL FRAME TYPE 1	st1 TIMBER BATTEN TYPE 1 - SPOTTED OLM OR SIMILAR
g2 CLEAR GLAZING IN BLACKBUTT TIMBER FRAME	st2 WHITE CYPRESS OR SIMILAR
ba1 OPAQUE GLAZED BALUSTRADE	st3 OAK, TIMBER OR SIMILAR
ba2 OPEN METAL BALUSTRADE - CHARCOAL	mc1 METAL CLADDING TYPE 1 - RED
ba3 FLAT SHEET METAL BALUSTRADE - CHARCOAL	mc2 METAL CLADDING TYPE 2 - CHARCOAL
	mc3 METAL CLADDING TYPE 3 - COPPER
	mc4 STANDING SEAM CLADDING TYPE 4 - CHARCOAL
	mc5 METAL CLADDING TYPE 5 - LIGHT GRAY OR SIMILAR
	st1 STEEL TYPE 1 - CHARCOAL
	g1 CLEAR GLAZING IN METAL FRAME TYPE 1
	g2 OPAQUE GLAZING IN METAL FRAME TYPE 2
	g3 OPAQUE GLAZING IN METAL FRAME TYPE 3
	ba1 METAL BALUSTRADE - HANDRAILS & DULUX CHARCOAL POWDERCOAT
	ba2 METAL BALUSTRADE - HANDRAILS & DULUX TYPE 2 - RED
	ba3 GLASS BALUSTRADE
	ba4 METAL BALUSTRADE - HANDRAILS & DULUX LIGHT GRAY OR SIMILAR

LOT 9	LOT 10
b1 TEXTURE RENDER TYPE 1	b1 TEXTURE RENDER TYPE 1
b2 TEXTURE RENDER TYPE 2	b2 TEXTURE RENDER TYPE 2
con1 METAL CLADDING TYPE 1	con1 NATURAL CONCRETE FINISH
st1 TIMBER CLADDING TYPE 1	con2 METAL CLADDING TYPE 1
g1 CLEAR DOUBLE GLAZING IN METAL FRAME TYPE 1	st1 TIMBER CLADDING TYPE 1
g2 TRANSLUCENT DOUBLE GLAZING IN METAL FRAME TYPE 2	st2 BRICK CLADDING TYPE 1
g3 CLEAR DOUBLE GLAZING IN METAL FRAME TYPE 1	g1 CLEAR DOUBLE GLAZING IN METAL FRAME TYPE 1
g4 TRANSLUCENT DOUBLE GLAZING IN METAL FRAME TYPE 2	g2 TRANSLUCENT DOUBLE GLAZING IN METAL FRAME TYPE 2
ba1 GLAZED BALUSTRADE	ba1 GLAZED BALUSTRADE
ba2 METAL BALUSTRADE	ba2 METAL BALUSTRADE
	mc1 METAL CLADDING TYPE 1

general
scr1 VERTICAL METAL SCREEN
scr2 VERTICAL METAL PRIVACY SCREEN IN METAL FRAME, MAX. 20% OPENING
scr3 HORIZONTAL METAL SCREEN
scr4 1700 HIGH VERTICAL METAL BATTEN PRIVACY SCREEN IN METAL FRAME, MAX. 20% PERFORATION
scr5 1700 HIGH WHITE OPAQUE GLAZING PRIVACY SCREEN IN METAL FRAME
scr7 1700 HIGH METAL BATTEN SCREEN, MIN. 40% TRANSPARENCY
planter
seat
seat
pa1 EXT. PAVING TYPE 1
pa2 EXT. PAVING TYPE 3
pa3 EXT. PAVING TYPE 2
pa4 EXT. PAVING TYPE 4
pa5 EXT. PAVING TYPE 5
roof-1 COLORBOND METAL DECK ROOF IN 'SURFMIST', MIN SRI 82



lot 3- section a-a
scale 1:200



lot 3- section b-b
scale 1:200