



# EAST BRUNSWICK VILLAGE

STAGE 3 TOWN PLANNING APPLICATION

LANDSCAPE DESIGN

rush\wright associates 31.05.18



# Table of Contents

Ground Level Public Realm Plan	3
Lot 3 First Floor Light Court Landscape Concept Plan	4
Lot 3 First Floor Light Court Key Plant Schedule	5
Lot 3 Roof Terrace Landscape Concept Plan	6
Lot 3 Roof Terrace Key Plant Schedule	7
Lot 4 First Floor Terrace & Lot 9 Link Terrace Garden Landscape Concept Plan	8
Lot 4 First Floor Terrace & Lot 9 Link Terrace Garden Key Plant Schedule	9
Lot 4 Roof Terrace Landscape Concept Plan	10
Lot 4 Roof Terrace Key Plant Schedule	11
Lot 8 Roof Terrace Landscape Concept Plan	12
Lot 8 Roof Terrace Key Plant Schedule	13
Lot 10 Roof Terrace Landscape Concept Plan	14
Lot 10 Roof Terrace Key Plant Schedule	15
Upper Terraces Typical Planter Details	16
Upper Terraces Typical Furniture Details	17

## EAST BRUNSWICK VILLAGE STAGE 3 TOWN PLANNING APPLICATION LANDSCAPE DESIGN

Prepared for JAM Architects by:

### rush\wright associates

Lvl 4, 105 Queen Street  
Melbourne Vic Australia 3000  
tel +61.3.9600 4255  
fax +61.3.9600 4266  
inbox@rushwright.com  
www.rushwright.com

#### Document Register:



Rev	Date	Purpose/Comment	Reason for Issue	Issued By
P1	17.06.16	Town Planning Application	DRAFT	TK
P2	24.06.16	Town Planning Application	DRAFT	TK
P3	17.08.16	Town Planning Application	SUBMISSION	CR
p4	21.09.16	Town Planning Application	AMENDMENT	AL
P5	08.08.17	OVGA Review	SUBMISSION	AL
P6	08.11.17	Response to Council RFI	SUBMISSION	AL
P7	31.05.18	Town Planning Application	SUBMISSION	AL

#### Disclaimer:

While every reasonable effort has been made to ensure that this document is correct at the time of printing, RWA has relied on considerable third party information and disclaim any and all liability to any person in respect of anything or the consequences of anything done or omitted to be done in reliance upon the whole or any part of this document.



Key

-  Bluestone pavement
-  Light grey granite pavement
-  Pink granite pavement
-  Bluestone sets to roadway and transition ramp
-  Asphalt
-  Bollards
-  Feature seat bollards
-  Propose light poles
-  Bicycle racks
-  Turf
-  Garden bed

Ground Level Public Realm

1. Main St Community Hub pedestrian zone, emergency vehicle access only.
2. Main St central spine retail, shared pedestrian & vehicle zone with flush kerbing.
3. Vehicle entry from Nicholson St with raised kerbing
4. Pedestrian laneway with flush kerbing and areas for cafe furniture in retail zone, emergency vehicle access only.
5. Laneways into surrounding streets paved with bluestone & light grey granite, and shaded by tree groves.
6. Raised planter garden beds enable establishment of tree groves in the streetscape. Planters are part raised and setdown into slab below pavement to provide for larger trees while minimising wall height.
7. On the shared pedestrian & vehicle zone, asphalt is the predominant vehicle traffic surface, granite paving in light neutral colours are used on pedestrian crossings. with bluestone sets adjacent the crossings and over transition ramps. Footpaths adjacent the shared zone are paved with a light coloured granite to provide visual delineation.
8. Northern raised terrace garden enables pedestrian linkage up to Lot 4 first floor terrace garden.
9. Grassed pocket park. In-ground garden bed where located outside basement carpark wall.
10. Nicholson St frontage with wide building setback enables establishment of larger trees & garden beds.
11. John St frontage with in-ground garden beds and tree rows.
12. Urban pergola adjacent large feature tree.
13. Green wall along supermarket wall
14. Green wall along Lot 4 north wall
15. New asphalt paving and fastigiated street trees to Elm Grove footpath adjacent to Lot 10 and 2 Elm Grove.
16. Bluestone sets paving flush with bluestone pavement to provide pedestrian priority.





Paving

Climbers on wall

Reclining deck

Raised planter

Screening hedge in steel edge planters

Synthetic turf lounge

Seating bench

Raised planter with informal seating edge and feature shrub planting

Screen hedge in steel edge planters

Seating bench

Raised steel edge planter

Climbers on wall

Raised planter with informal seating edge feature shade tree

**LOT 3 FIRST FLOOR LIGHTCOURT  
LANDSCAPE CONCEPT PLAN**

scale 1:50@ A3





# Lot 3 first floor light court plant schedule

Total garden bed area (m2)	22
Typical planting density (m2; excluding trees)	4
No. of plants (excluding trees)	89
No. of trees	3

Species	Common Name	Pot Size	Mature Size	Density
<b>Trees</b>				
<b>As shown</b>				
<i>Hymenosporum flavum</i>	Native Frangipani	45L	h.8m, w.5m	
<i>Tipuana tipu</i>	Pride of Bolivia	45L	h.12m, w.10m	
<i>Trachycarpus fortunei</i>	Chinese Windmill Palm	45L	h.5m, w.2m	
<b>Hedges</b>				
<i>Buxus sempervirens</i>	English Box	140mm	h.2m, w.1m	4/m2
<b>Understorey</b>				
<i>Agave attenuata</i>		300mm	h.1.2m	1/m2
<i>Carpobrotus modestus</i>	Inland Pig Face	140mm	h.0.1m, w.1-1.3m	3/m2
<i>Correa alba prostrata</i> "Star Showers"		140mm	h.0.3-0.4m, w.0.5-1m	4/m2
<i>Crassula arborescens</i>		140mm	h.0.3m, w.0.8m	4/m2
<i>Cycas revoluta</i>	Sago Palm	300mm	h.2.5m, w.2.5m	1/2m2
<i>Dianella tasmanica</i> 'Tasred'	Flax Lily Hybrid	200mm	h.2.5m, w.2m	4/m2
<i>Fatsia japonica</i>	Japanese aralia	140mm	h.2-4m, w.1-2m	1/m2
<i>Hibbertia truncata</i> (low form)		140mm	h.0.3m, w.1m	4/m2
<i>Lomandra confertifolia</i> 'Seascape'	Mat Rush	140mm	h.0.5m, w.0.75m	4/m2
<i>Lotus berthelotii</i>	Trailing Lotus	140mm	h.0.2-0.3m, w.0.6-0.9m	4/m2
<i>Nandina domestica</i>	Japanese Bamboo	200mm	h.2.5, w.1m	1/m2
<i>Pelargonium australe</i>	Native Geranium	140mm	h.0.5m	4/m2
<b>Climbers</b>				
<b>1/lin m</b>				
<i>Billardiera longiflora</i>	Apple Berry	140mm		
<i>Mandevilla</i> 'Sun Parasol Giant White'	Mandevilla Vine white cultivar	140mm		
<i>Trachelospermum asiaticum</i>	Asiatic Jasmine	140mm		1/3m2



Arbours with climbers over

Bar height table

Raised steel edge planter with edible herb planting

Paving

Shade sail over lower turf lounge

View out to garden

Raised garden bed with lush tropical planting

Paving

Climbers on wall

Seating edge

Raised planter

Lower synthetic turf lounge under shade sail

View out to garden

Feature tree

Raised planter (below seating deck / upper turf lounge)

Raised tree planter

Terraced deck with bean bags / loungers

Demountable movie screen location

Seating / reclining decks with back rest

1000mm high glass balustrade on 400mm high parapet to allow views out

Upper synthetic turf lounge

View to Merri Creek parklands

Raised planter

Steel blade wall

Accessible ramp with handrails to upper deck / turf lounge

# LOT 3 ROOF TERRACE LANDSCAPE CONCEPT PLAN

scale 1:100@ A3





# Lot 3 roof terrace plant schedule

Total garden bed area (m2)	74
Planting density (m2; excluding trees)	4
No. of plants (excluding trees)	296
No. of trees and hedge plants	20

Species	Common Name	Pot Size	Mature Size	Density
<b>Trees and Hedge Plants</b>				<b>As shown</b>
<i>Fortunella japonica</i>	Kumquat	45L	(hedged)	
<i>Lagerstroemia 'Tuscarora'</i>	Coral-Red Crepe Myrtle	45L	8 x 4m	
<i>Laurus nobilis</i>	Bay Laurel	45L	(hedged)	
<i>Olea europaea 'Kalamata'</i> and other	Kalamata Olive	45L	6m x 6m	
<b>Understorey and Palms</b>				
<i>Agave geminiflora</i>		300mm	h.0.9-1m	1/m2
<i>Brachyscome multifida (mauve)</i>	Cut-Leaf Daisy	140mm	h.0.4m, w.0.6m	4/m2
<i>Carpobrotus modestus</i>	Inland Pig Face	140mm	h.0.1m, w.1-1.3m	4/m2
<i>Crassula arborescens</i>		140mm	h.0.3m, w.0.8m	4/m2
<i>Grevillea 'Mt Tamboritha'</i>	Prostrate Grevillea	140mm	h.0.2m, w.0.8m	3/m2
<i>Hibbertia truncata (low form)</i>		140mm	h.0.3m, w.1m	4/m2
<i>Kumara plicatilis</i>	Fan Aloe	300mm	h.1m, w.1m	1/3m2
<i>Lomandra 'Tanika'</i>	Mat Rush Hybrid	140mm	h.0.5-0.6m, w.0.65m	4/m2
<i>Lotus berthelotii</i>	Trailing Lotus	140mm	h.0.2-0.3m, w.0.6-0.9m	4/m2
<i>Myoporum parvifolium</i>	Prostrate Boobialla	140mm	h.0.1, w.1m	1/m2
<i>Nepeta 'Six Hills Giant'</i>	Six Hills Giant Catmint	140mm	h.0.5m, w.0.85m	4/m2
<i>Nolina nelsonii</i>	Blue Bear Grass Tree	300mm	h.3m, w.2m	1/3m2
<i>Origanum spp</i>	Oregano	140mm	h.0.4m, w.0.4m	4/m2
<i>Rosmarinus officinalis Prostratus</i>	Creeping Rosemary	140mm	h.0.5m, w.2-3m	3/m2
<i>Thymus x citriodorus</i>	Lemon thyme	140mm	h.0.1m, w.0.3m	4/m2
<i>Thymus serpyllum</i>	Thyme	140mm	h.0.2-0.5m, w.0.3-0.45m	4/m2
<b>Climbers</b>				<b>1/lin m</b>
<i>Aphanopetalum resinum</i>	Bugle Flower	140mm		
<i>Kennedia rubicunda</i>	Dusky Coral Pea	140mm		
<i>Mandevilla x "Aloha Red"</i>	Mandevilla Vine red cultivar	140mm		
<i>Parthenocissus tricuspidata veitchii</i>	Boston Ivy	140mm		
<i>Vitis vinifera</i>	Ornamental Grape Vine	140mm		





Lot 9 & Lot 4 link terrace garden accessed from ground level

Lot 4 building overhangs the link garden at west end

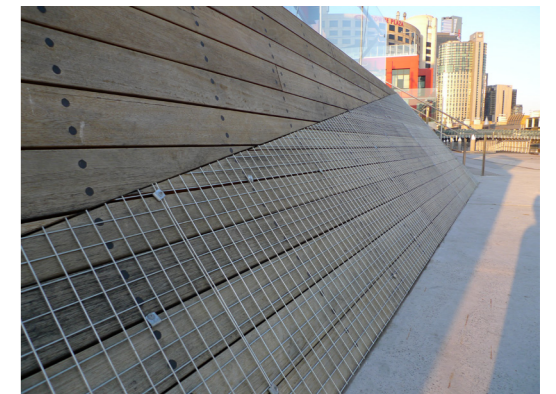
### Lot 4 First Floor Terrace Garden

- 1.. Raised planter garden bed mounded up to provide soil volume for tree growth.
2. Artificial turf lawn adjacent garden bed provides softer surface for children to play.
3. Chaise lounge chairs and side tables
4. Long communal lounge seat. Steel framed furniture with timber or recycled plastic battens.
5. Seating & table integrated with planter wal.
6. Tiered seat terrace adjacent the communal barbeque.
7. Communal barbeque sized to cater for larger gatherings.
8. Entry from lift foyer.

Lot 4 building overhangs the link garden

### Lot 4 & Lot 9 Link Terrace Garden

- L1. Ramp up from street level to upper raised deck
- L2. Decking in timber or recycled plastic
- L3. Terraced seat platforms address street level
- L4. Timber-cladded battered wall with climbers / trailing plants over.
- L5. Stairs lead from terrace garden to Lot 4 first floor terrace garden
- L6. Climber plants to north wall & under Lot 4 building overhang
- L7. Raised planter along battered wall.
- L8. Seat along raised planter.
- L9. Raised garden bed with bollard lights.
- L10. Lot 9 entrance court.
- L11. Seat along planter addressing Lot 9 entrance.
- L12. Stepped planters with tree planting.



Timber cladded battered wall precedent image - World Trade Centre, Melbourne



# Lot 4 first floor & lot 9 link terrace plant schedule

Total garden bed area (m2)	441
Planting density (m2; excluding trees)	4
No. of plants (excluding trees)	1763
No. of trees	27

Species	Common Name	Pot Size	Mature Size	Density	Species	Common Name	Pot Size	Mature Size	Density
<b>Trees, palms</b>					<b>Climbers</b>				
<b>As shown</b>					<b>1/lin m</b>				
<i>Araucaria columnaris</i>	Cook Pine	45L	h.10m, w.3m		<i>Cissus antarctica</i>	Kangaroo Vine	200mm		
<i>Archontophoenix alexandrae</i>	Bangalow Palm	45L	h.15-25m, w.2-3m		<i>Ficus pumila var minima</i>	Climbing Fig	200mm		
<i>Callistemon salignus</i>	Willow Bottlebrush	45L	h.7m		<i>Solandra maxima</i>	Golden Chalice Vine	200mm		
<i>Ceiba speciosa (multistem)</i>	Silk Floss Tree	45L	h.15m, w.8m		<b>Sedges &amp; Rushes</b>				
<i>Cyathea australis</i>	Rough Tree Fern	45L	h.6m, w.5m		<i>Carex appressa</i>	Tall Sedge	140mm	h.0.8m, w.0.7m	4/m2
<i>Davidsonia pruriens</i>	Davidson's Plum	45L	h.12m, w.6m		<i>Lomandra filiformis</i>	Wattle Matt Rush	140mm	h.0.5m, w.0.2m	4/m2
<i>Elaeocarpus eumundii</i>	Smooth leafed Quandong	45L	h.8m, w.3m		<i>Lomandra longifolia 'fine leaf form'</i>	Spiny Mat Rush	140mm	h.1m, w.1.2m	4/m2
<i>Ficus elastica rubra</i>	Rubber Plant	45L	h.1-2m, w.1-2m		<i>Ficinia nodosa</i>	Knobbly Club-rush	140mm	h.1m, w.1.5m	4/m2
<i>Howea forsteriana</i>	Kentia Palm	45L	h.8m		<b>Ferns</b>				
<i>Hymenosporum flavum</i>	Native Frangipani	45L	h.9m, w.4m		<i>Asparagus densiflorus myersii</i>	Asparagus Fern	140mm	h.0.6-0.8m	4/m2
<i>Macadamia tetraphylla</i>	Macadamia	45L	h.18m, w.4m		<i>Nephrolepis cordifolia</i>	Fishbone Fern	140mm	h.0.5m	4/m2
<i>Umbrellera actinophylla</i>	Umbrellera Plant	45L	h.10m, w.3m		<i>Pteris tremula</i>	Fern	140mm	h.1m, w.0.8m	4/m2
<i>Stenocarpus sinuatus</i>	Firewheel Tree	45L	h.12, w.6m						
<i>Syzygium anisatum</i>	Ringwood, Aniseed Tree	45L	h.8m, w.6m						
<b>Understorey plants</b>									
<i>Aspidistra elatior</i>	Aspidistra	140mm	h.0.5m	4/m2					
<i>Banksia 'Mini Marg'</i>	Prostrate Banksia 'Mini Marg'	140mm	h.2m, w.2m	4/m2					
<i>Banksia 'Schnapper Point'</i>	Prostrate Banksia 'Schnapper Point'	140mm		4/m2					
<i>Beschorneria yuccoides</i>	Mexican Lily	300mm	h.1m, w.1m	1/m2					
<i>Cordyline petiolaris</i>	Broad Leaf Palm Lily	200mm	h.2-5m	1/3m2					
<i>Crinum pedunculatum</i>	Crinum	140mm	h.1.2m, w.2.4m	4/m2					
<i>Cycas revoluta</i>	Sago Palm	140mm	h.3.5m, w.2m	1/2m2					
<i>Cyathea australis</i>	Rough Tree Fern	140mm	h.6m, w.5m	1/2m2					
<i>Dianella brevicaulis</i>	Coast Flax Lily	140mm	h.0.3-0.6m, w.0.6-1m	4/m2					
<i>Dianella tasmanica 'Tas Red'</i>	Flax Lily	140mm	h.1.1m, w.0.5m	4/m2					
<i>Dianella 'Utopia'</i>	Flax Lily 'Utopia'	140mm	h.0.5m, w.0.5m	4/m2					
<i>Derwentia perfoliata</i>	Diggers Speedwell	140mm	h.0.6m, w.1m	1/m2					
<i>Doryanthes excelsa</i>	Gynea Lily	300mm	h.6m, w.2.4m	1/4m2					
<i>Helmolzia glaberrima</i>	Stream Lily	200mm	h.1m	1/m2					
<i>Lepidozamia peroffskyana</i>	Pineapple zamia	300mm	h.3m, w.2m	1/4m2					
<i>Leptospermum obovatus 'Starry Night'</i>	Tea Tree 'Starry Night'	140mm	h.2m, w.1-2m	1/m2					
<i>Leptospermum rotundifolium 'Jervis Bay'</i>	Round-leaf Tea Tree 'Jervis Bay'	140mm	h.2m, w.3m	1/m2					
<i>Sansieveria trifasciata 'variegata'</i>	Mother in Laws Tongues	140mm	h.0.6m, w.0.1m	4/m2					
<i>Sinobambusa oldhamii</i>	Tall Bamboo	300mm	h.15m, w.5m	1/3m2					
<b>Groundcovers</b>									
<i>Ajuga reptans 'Jungle Beauty'</i>	Bugle Flower	140mm	h.0.2m, w.0.4m	4/m2					
<i>Hibbertia aspera</i>	Rough Guinea Flower	140mm	h.0.3m, w.1m	4/m2					
<i>Zieria prostrata</i>	Headland Zieria	140mm	w.0.5m	4/m2					

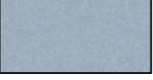


**Lot 4 Roof Garden**

- L1. Open flat artificial turf games court
- L2. Tilted artificial turf lawn
- L3. Raised timber deck
- L4. Arbour over BBQ areas with climbers over
- L5. Communal productive garden
- L6. Tree grove (high impact on exit from lift)
- L7. Climber structure for play space with softfall surface
- L8. Undulating sun deck
- L9. Windbreak tree planting
- L10. Edge planter with bar and stools
- L11. Sand pit with benches
- L12. Trees in planters with comfortable bench seats
- L13. Pleached trees in large planters with bench seating



**Key**

-  Stone Paving
-  Deck
-  Sand Pit
-  Soft Fall Surface
-  Artificial Turf
-  Garden Bed
-  Fruiting Trees
-  Shade / Windbreak Trees
-  Edible Planting





# Lot 4 roof terrace plant schedule

Total garden bed area (m2)	89
Planting density (m2; excluding trees)	4
No. of plants (excluding trees)	356
No. of trees	52

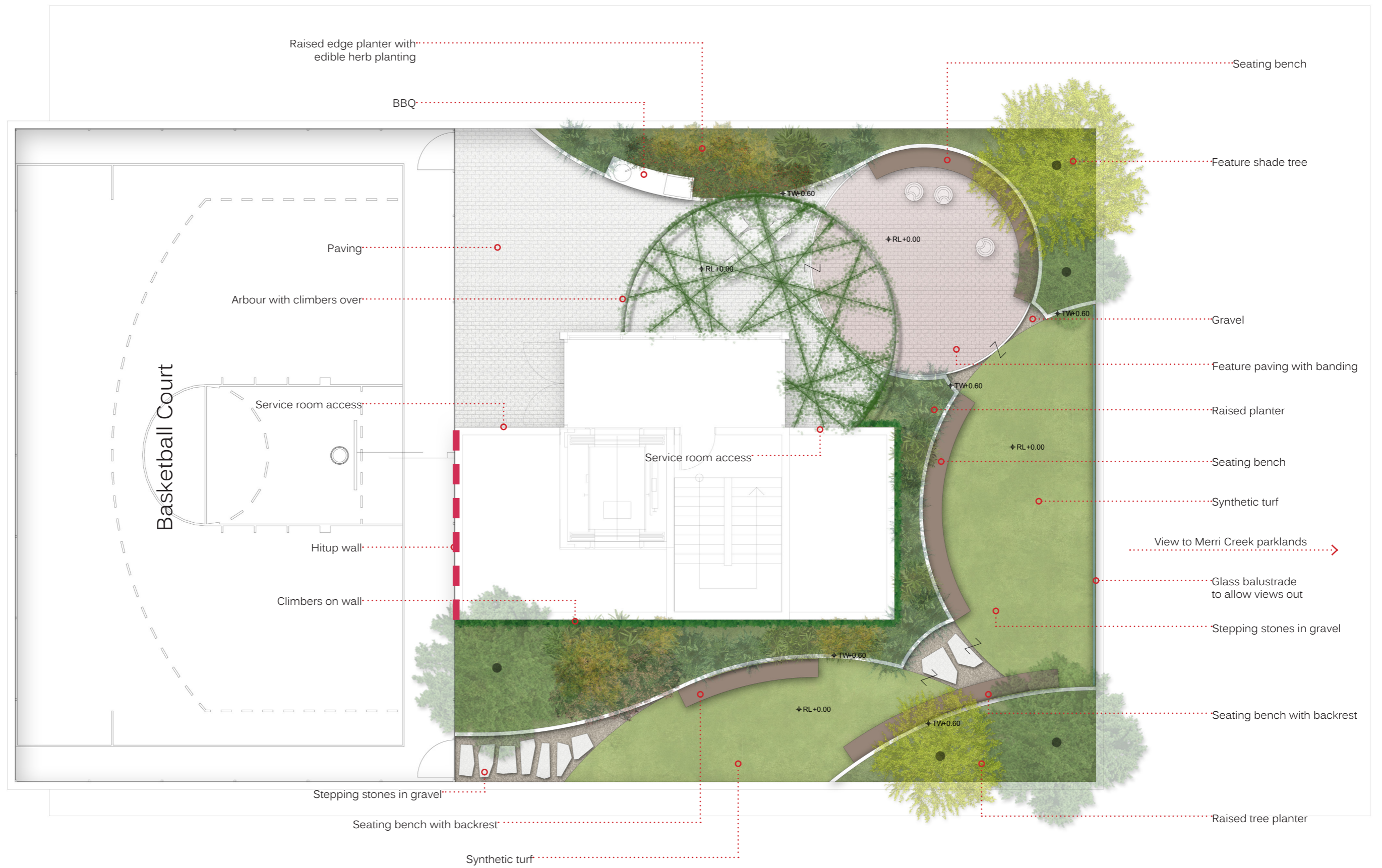
Species	Common Name	Pot Size	Mature Size	Density
<b>Trees/large shrubs</b>				<b>As shown</b>
<i>Citrus limon</i>	Lemon	45L	h.4m, w.3m	
<i>Citrus reticulata</i>	Mandarin	45L	h.3-5m, w.3m	
<i>Citrus Tahitian Lime</i>	Tahitian Lime	45L	h.3m, w.3m	
<i>Ficus carica 'Brown Turkey'</i>	Common Fig	45L	h.4m, w.4m	
<i>Fortunella japonica</i>	Kumquat	45L	h.2-5m	
<i>Lagerstroemia indica x fauriei "Tonto"</i>	Crepe myrtle	45L	h.3m, 2.3m	
<i>Laurus nobilis</i>	Bay Laurel	45L	h.7m	
<i>Olea europaea 'Kalamata'</i>	Kalamata Olive	45L	h.6m	
<i>Prunus cerasifera "Oakville Crimson Spire"</i>	Purple plum cultivar	45L	h.6m, w.2m	
<i>Prunus virginiana "Purple Jewel"</i>	Purple plum cultivar	45L	h.5m, w.4m	
<i>Punica granatum</i>	Pomegranate	45L	h.5-8m	
<i>Pyrus calleryana</i>	Callery Pear	45L	h.11-12m, w.1-3m	

<b>Understorey</b>				
<i>Lavandula angustifolia "Hidcote"</i>	Hidcote lavender	140mm	h.0.5m, w.0.5m	4/m2
<i>Lomandra confertifolia 'Seascape'</i>	Mat Rush	140mm	h.0.5m, w.0.75m	4/m2
<i>Lotus berthelotii</i>	Trailing Lotus	140mm	h.0.2-0.3m, w.0.6-0.9m	4/m2
<i>Mentha spicata</i>	Spearmint	140mm	h.0.6m, w.0.5m	4/m2
<i>Nepeta cataria</i>	Catmint	140mm	h.1m	4/m2
<i>Nepeta 'Dropmore'</i>	Dropmore Catmint	140mm	h.0.25-0.3m, w.0.3-0.45m	4/m2
<i>Nepeta 'Six Hills Giant'</i>	Six Hills Giant Catmint	140mm	h.0.5m, w.0.85m	4/m2
<i>Origanum spp</i>	Oregano	140mm	h.0.2-0.8m	4/m2
<i>Pelargonium australe</i>	Native Geranium	140mm	h.0.5m	4/m2
<i>Pelargonium citronellum</i>	Lemon geranium	140mm	h.1-2m, w.1m	4/m2
<i>Pelargonium tomentosum</i>	Peppermint Geranium	140mm	h.0.6m, w.1m	4/m2
<i>Rosmarinus officinalis</i>	Rosemary	140mm	h.0.5m, w.2-3m	4/m2
<i>Rosmarinus officinalis Prostratus</i>	Creeping Rosemary	140mm	h.0.5m, w.2-3m	4/m2
<i>Thymus x citriodorus</i>	Lemon thyme	140mm	h.0.1m, w.0.3m	4/m2
<i>Thymus serpyllum</i>	Thyme	140mm	h.0.2-0.5m, w.0.3-0.45m	4/m2
<i>Vinca minor alba</i>	Small White Periwinkle	140mm	h.0.15-0.3m, w.0.6-1m	4/m2

<b>Annuals in vegetable plots</b>				
<i>Beans, Broad Beans, Tomatoes, Basil, Marigold</i>		140mm	Varies	4/m2

<b>Climbers</b>				<b>1/lin m</b>
<i>Mandevilla x "Aloha Red"</i>	Mandevilla Vine red cultivar	140mm		
<i>Mandevilla 'Sun Parasol Giant White'</i>	Mandevilla Vine white cultivar	140mm		
<i>Trachelospermum asiaticum</i>	Asiatic Jasmine	140mm		
<i>Vitis vinifera</i>	Ornamental Grape Vine	140mm		







# Lot 8 roof terrace plant schedule

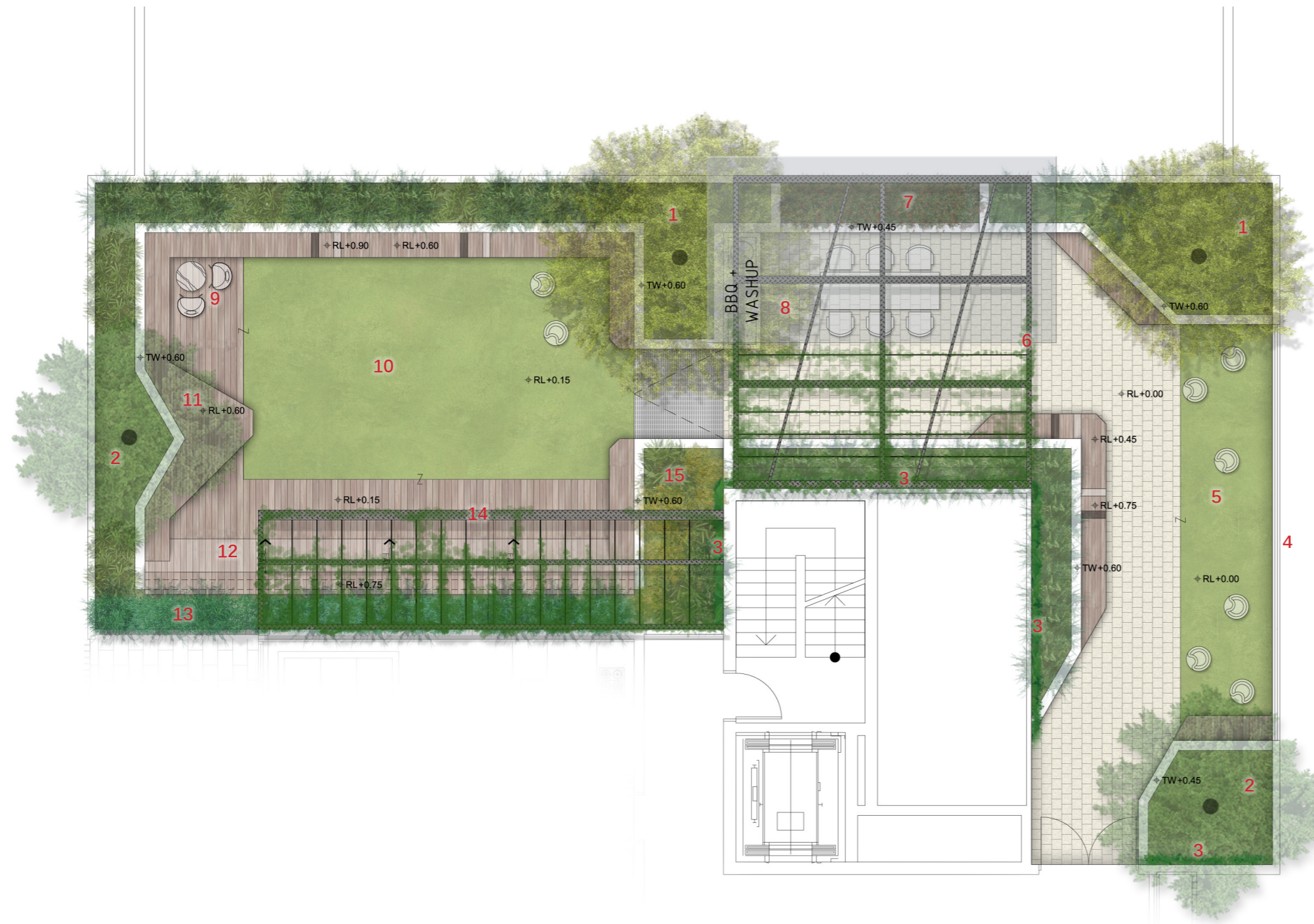
Total garden bed area	94
Planting density (m2; excluding trees)	4
No. of plants (excluding trees)	376
No. of trees	5

Species	Common Name	Pot Size	Mature Size	Density
<b>Trees</b>				
<b>As shown</b>				
<i>Banksia serrata</i>	Old Man Banksia	45L	h.10m, w.5m	
<i>Cussonia paniculata</i>	Mountain Cabbage Tree	45L	h.4-5m	
<i>Cussonia spicata</i>	Spiked Cabbage Tree	45L	h.15m	
<i>Hakea bucculenta 'Intensity'</i>	Red Pokers	45L	h.4m, w.3m	
<i>Punica granatum</i>	Pomegranate	45L	h.3m, w.3m	




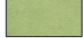
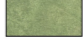

<b>Understorey</b>				
<i>Agave attenuata</i>		300mm	h.1.2m	1/m2
<i>Agave geminiflora</i>		300mm	h.0.9-1m	1/m2
<i>Brachyscome multifida (mauve)</i>	Cut-Leaf Daisy	140mm	h.0.4m, w.0.6m	4/m2
<i>Carpobrotus rossii</i>	Karhalla	140mm	h.0.2-0.4m, w.1-3m	1/m2
<i>Correa alba prostrate "Star Showers"</i>		140mm	h.0.3-0.4m, w.0.5-1m	4/m2
<i>Crassula arborescens</i>		140mm	h.0.3m, w.0.8m	4/m2
<i>Crassula ovata "Coral"</i>		140mm	h.0.5m, w.0.5m	4/m2
<i>Lotus berthelotii</i>	Trailing Lotus	140mm	h.0.2-0.3m, w.0.6-0.9m	4/m2
<i>Mesembryanthemum sp.</i>	Ice plant	140mm	h.0.15-0.2m, w.0.25-0.3m	4/m2
<i>Nepeta 'Dropmore'</i>	Dropmore Catmint	140mm	h.0.25-0.3m, w.0.3-0.45m	4/m2
<i>Nepeta 'Six Hills Giant'</i>	Six Hills Giant Catmint	140mm	h.0.5m, w.0.85m	4/m2
<i>Origanum spp</i>	Oregano	140mm	h.0.4m, w.0.4m	4/m2
<i>Pelargonium peltatum</i>	Ivy-leaf Geranium	140mm	h.0.3m, w.0.5m	4/m2
<i>Rosmarinus officinalis Prostratus</i>	Creeping Rosemary	140mm	h.0.5m, w.2-3m	4/m2
<i>Thymus x citriodorus</i>	Lemon thyme	140mm	h.0.1m, w.0.3m	4/m2
<i>Thymus serpyllum</i>	Thyme	140mm	h.0.2-0.5m, w.0.3-0.45m	4/m2

<b>Climbers</b>				1/lin m
<i>Clematis microphylla</i>	Small leaf clematis	140mm		
<i>Kennedia rubicunda</i>	Dusky Coral Pea	140mm		
<i>Muehlenbeckia complexa</i>	Maiden hair vine	140mm		
<i>Mandevilla x "Aloha Red"</i>	Mandevilla Vine red cultivar	140mm		
<i>Mandevilla 'Sun Parasol Giant White'</i>	Mandevilla Vine white cultivar	140mm		
<i>Plumbago auriculata</i>	Cape Plumbago	140mm		





Key

-  Stone Paving
-  Deck
-  Metal Grate Paving
-  Artificial Turf
-  Garden Bed
-  Folded Linear Deck Providing Seating and Low Tables

Lot 10 Roof Garden

1. Feature multi-stem shade tree.
2. Feature single-stem shade tree.
3. Climbers on walls.
4. Section of clear balustrade.
5. Turf lounge.
6. Arbour / skillion pergola with steel beams and translucent cover + climbers.
7. Edible planting.
8. Communal BBQ / social space to accommodate loose furniture arrangements.
9. Decked platform providing smaller social niches.
10. Open artificial turf providing flexible play + lounge area.
11. Seat-height deck platform.
12. Reclining sun deck.
13. Bamboo planting to provide screening.
14. Arbour with steel beams and climbers over.
15. Feature planting visible from hallway.



Material image



# Lot 10 roof terrace plant schedule

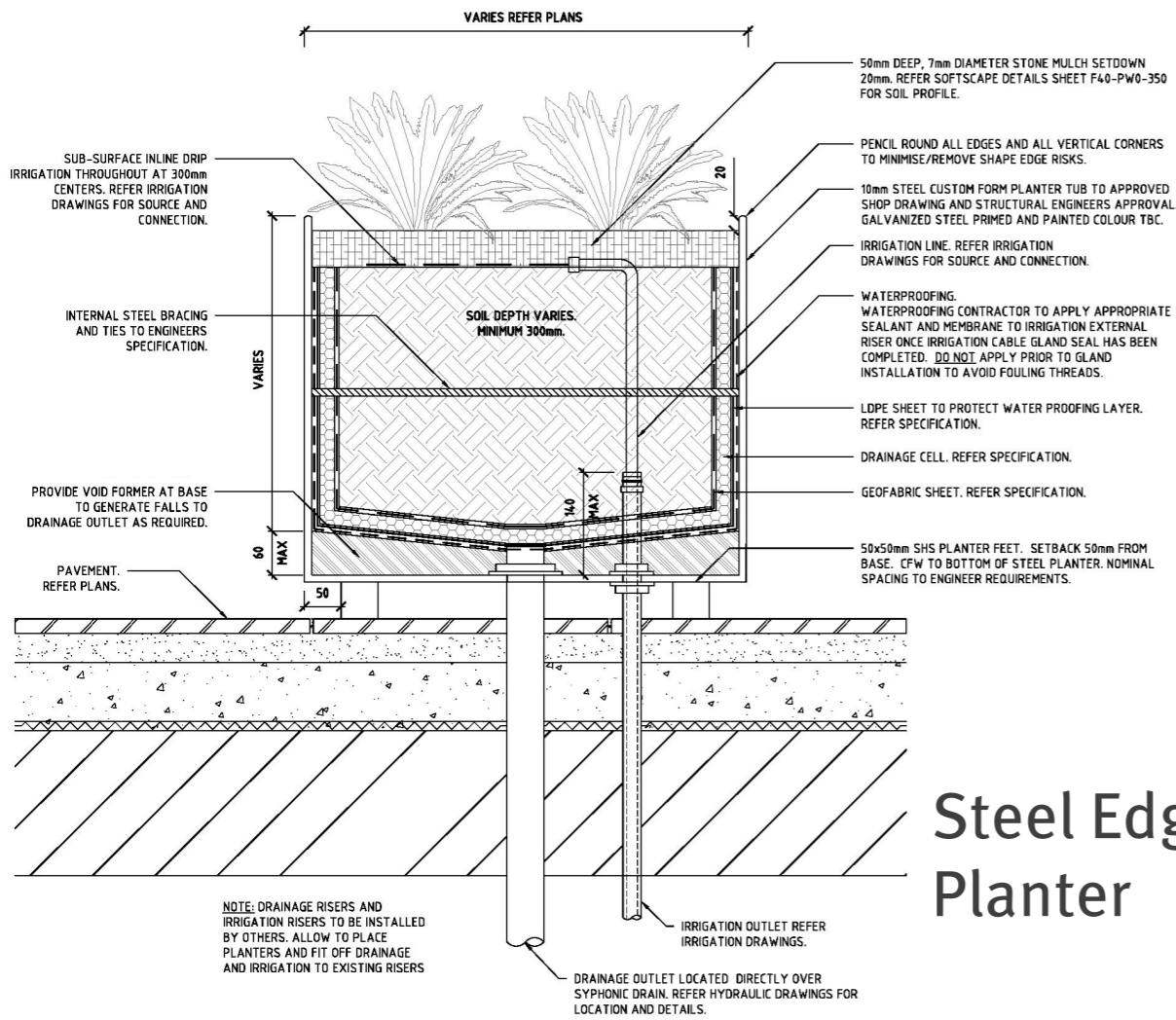
Total garden bed area	62
Planting density (m2; excluding trees)	4
No. of plants (excluding trees)	247
No. of trees	4

Species	Common Name	Pot Size	Mature Size	Density
<b>Trees / Bamboos / Large Shrubs</b>				
<b>As shown</b>				
<i>Allocasuarina paradoxa</i>	Dwarf She-Oak (hedged)	45L	h.2-4m, w.2-5m	
<i>Banksia ericifolia</i>	Giant Candles (hedged)	45L	h.2-7m	
<i>Fortunella japonica</i>	Kumquat	45L	h.2.5m	
<i>Laurus nobilis</i>	Bay Laurel	45L	h.7m	
<i>Olea europaea 'Kalamata'</i> and other varieties	Kalamata Olive	45L	h.6m	
<i>Punica granatum</i>	Pomegranate	45L	h.5-8m	

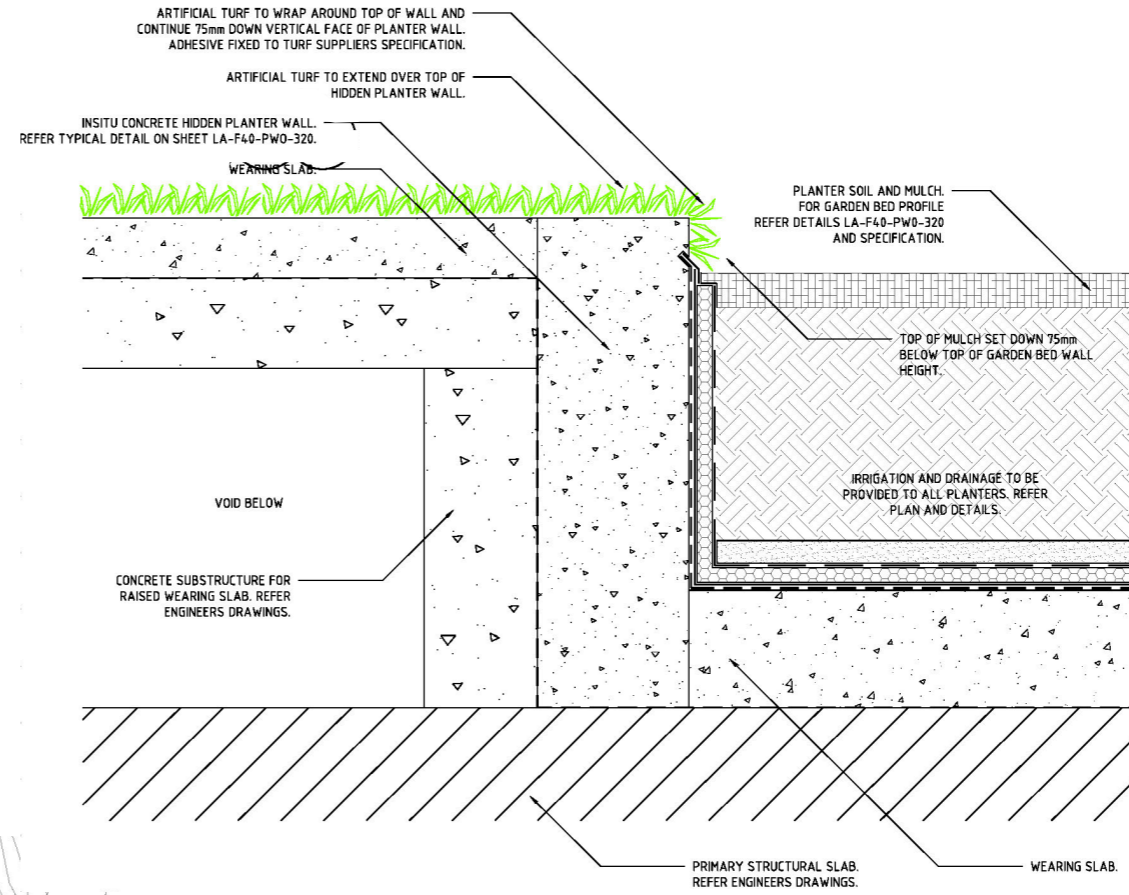
<b>Understorey / Succulents</b>				
<i>Agave attenuata</i>		300mm	h.1.2m	4/m2
<i>Agave geminiflora</i>		300mm	h.0.9-1m	4/m2
<i>Brachyscome multifida (mauve)</i>	Cut-Leaf Daisy	140mm	h.0.4m, w.0.6m	4/m2
<i>Carpobrotus modestus</i>	Inland Pig Face	140mm	h.0.1m, w.1-1.3m	4/m2
<i>Correa alba prostrate "Star Showers"</i>		140mm	h.0.3-0.4m, w.0.5-1m	4/m2
<i>Crassula arborescens</i>		140mm	h.0.3m, w.0.8m	4/m2
<i>Crassula ovata "Coral"</i>		140mm	h.0.5m, w.0.5m	4/m2
<i>Hibbertia truncata (low form)</i>		140mm	h.0.3m, w.1m	4/m2
<i>Lomandra confertifolia 'Seascape'</i>	Mat Rush	140mm	h.0.5m, w.0.75m	4/m2
<i>Lotus berthelotii</i>	Trailing Lotus	140mm	h.0.2-0.3m, w.0.6-0.9m	4/m2
<i>Nepeta 'Dropmore'</i>	Dropmore Catmint	140mm	h.0.25-0.3m, w.0.3-0.45m	4/m2
<i>Nepeta 'Six Hills Giant'</i>	Six Hills Giant Catmint	140mm	h.0.5m, w.0.85m	4/m2
<i>Origanum spp</i>	Oregano	140mm	h.0.4m, w.0.4m	4/m2
<i>Pelargonium australe</i>	Native Geranium	140mm	h.0.5m	4/m2
<i>Rosmarinus officinalis Prostratus</i>	Creeping Rosemary	140mm	h.0.5m, w.2-3m	4/m2
<i>Thymus x citriodorus</i>	Lemon thyme	140mm	h.0.1m, w.0.3m	4/m2
<i>Thymus serpyllum</i>	Thyme	140mm	h.0.2-0.5m, w.0.3-0.45m	4/m2

<b>Climbers</b>				<b>1/lin m</b>
<i>Billardiera longiflora</i>	Apple Berry	140mm		
<i>Mandevilla 'Sun Parasol Giant White'</i>	Mandevilla Vine white cultivar	140mm		
<i>Parthenocissus tricuspidata veitchii</i>	Boston Ivy	140mm		
<i>Trachelospermum asiaticum</i>	Asiatic Jasmine	140mm		
<i>Vitis vinifera</i>	Ornamental Grape Vine	140mm		

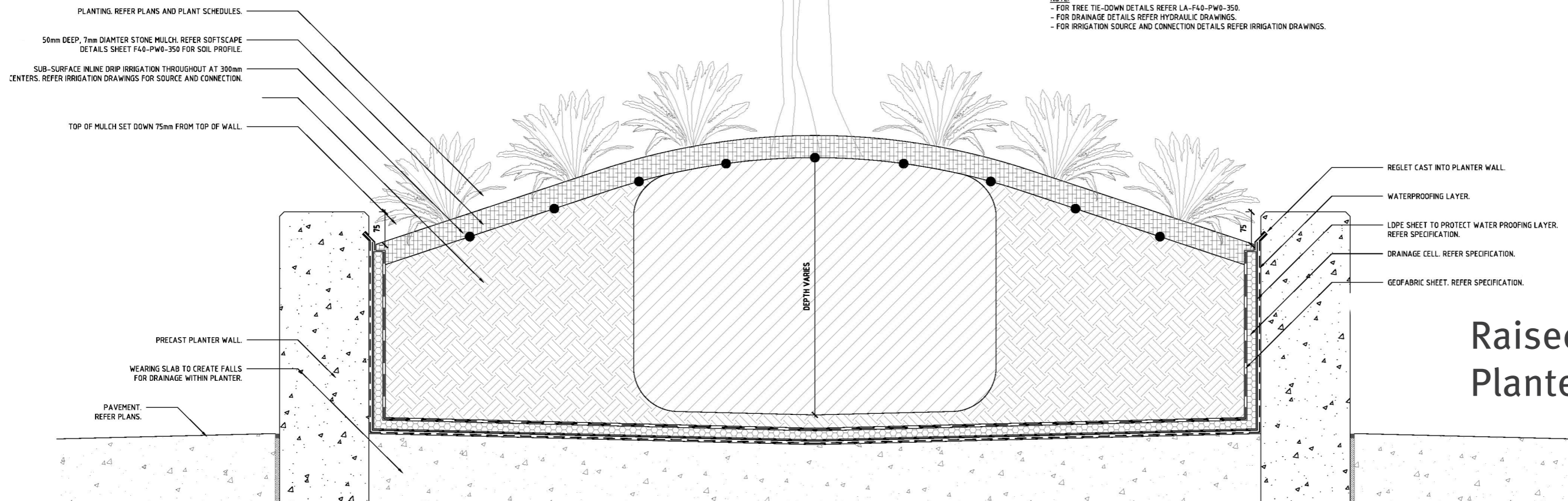




Steel Edge Planter



In situ concrete / blockwork wall planter



Raised Tree Planter



